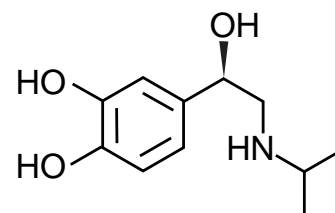
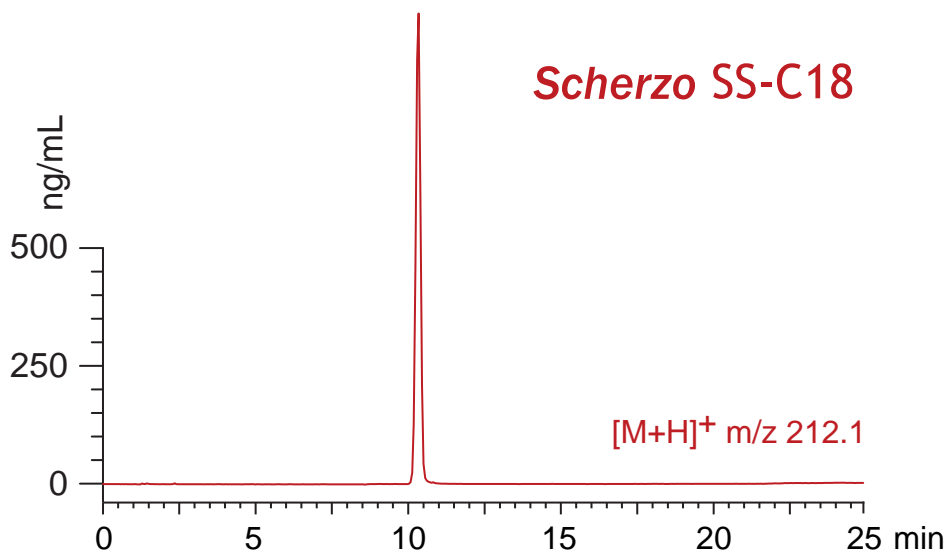


Scherzo SS-C18
Intrada Amino Acid

100 x 3 mm

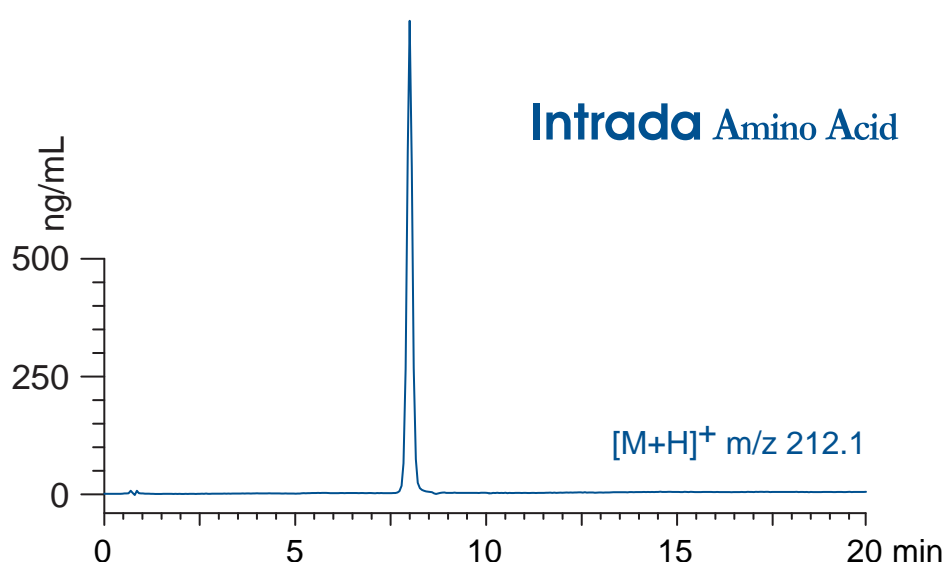
Application

LC-MS: isoproterenol
 イソプロテレノールのLC-MS分析



L-isoproterenol

Scherzo SS-C18, 100 x 3 mm
 A: methanol / water / formic acid = 35 / 65 / 0.5
 B: methanol / 100mM ammonium formate = 40 / 60
 0-40 %B (0-20min), 100 %B (20-25min)
 0.4 mL/min (10.0MPa), 37°C, 20 µL (1µg/mL, 1% HCOOH)
 Single Quad. MS (ESI, positive)



Intrada Amino Acid, 100 x 3 mm
 A: methanol / water / formic acid = 80 / 20 / 0.3
 B: methanol / 100mM ammonium formate = 30 / 70
 20 %B (0-1min), 20-100 %B (1-10min), 100 %B (10-20min)
 0.6 mL/min (12 MPa), 37°C, 20 µL (1µg/mL, 1% HCOOH)
 Single Quad. MS (ESI, positive)