

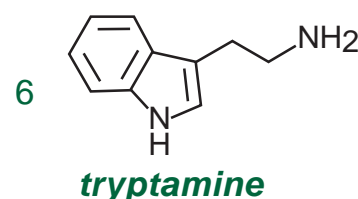
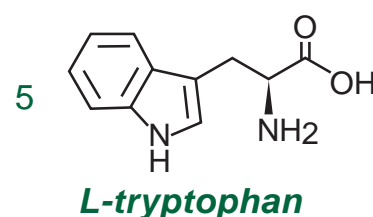
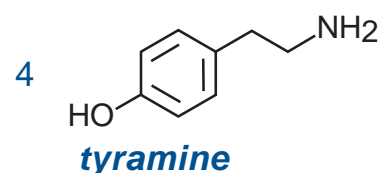
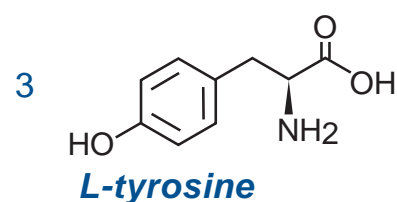
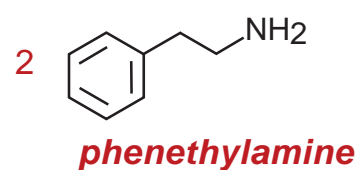
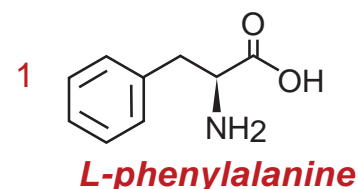
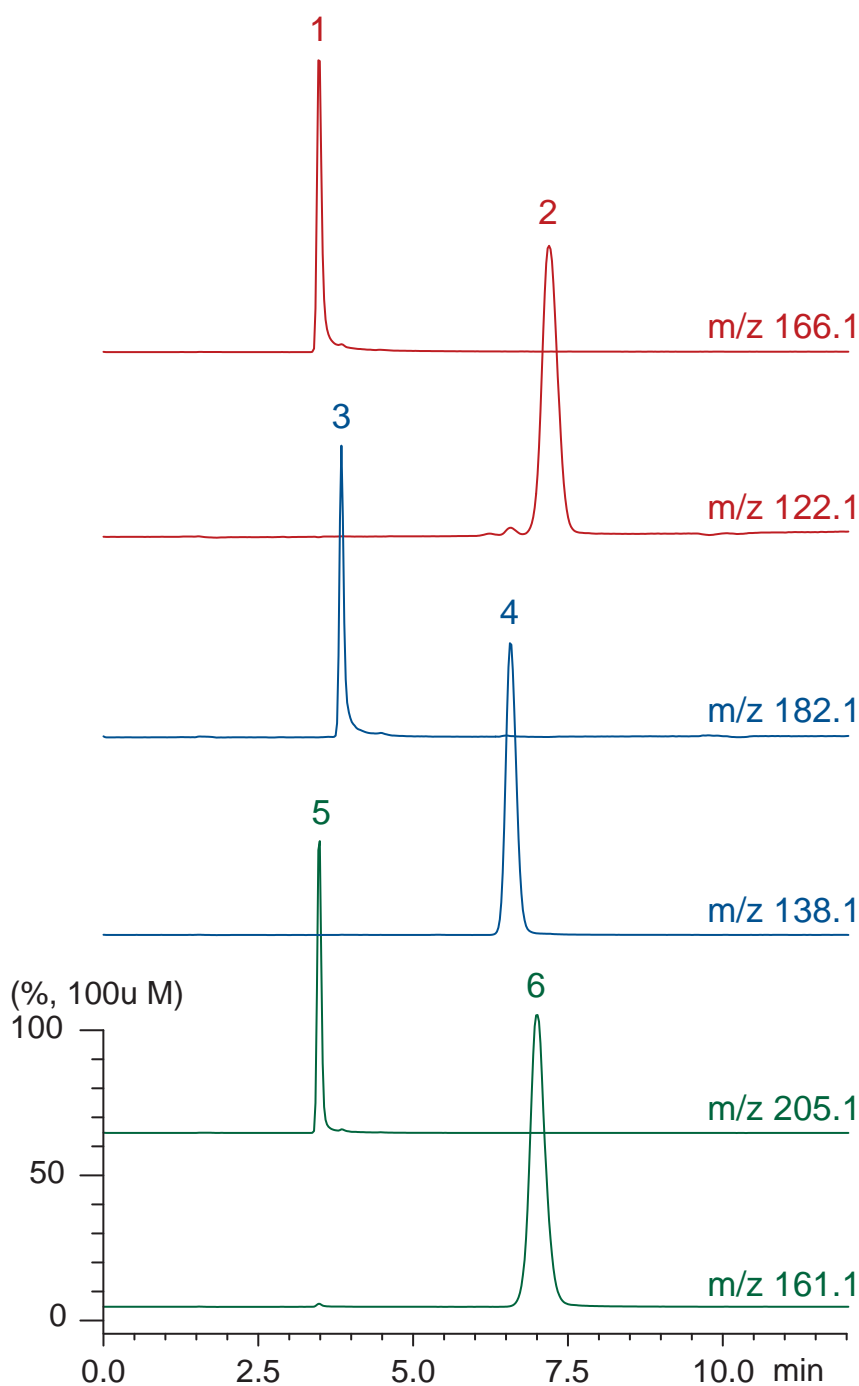
**Intrada Amino Acid**

100 x 3 mm

Application

LC-MS: biogenic amines and precursor amino acids (2)

腐敗アミンと前駆アミノ酸のLC-MS分析 (2)



Intrada Amino Acid, 100 x 3 mm

A: acetonitrile / formic acid = 100 / 0.1

B: acetonitrile / 100 mM ammonium formate = 20 / 80  
25-100 %B (0-10min), 100 %B (10-12min)

0.4 mL/min (4 MPa), 37°C, 5uL (100nmol/mL, 0.1N HCl)

Single Quad. MS (ESI, positive)