

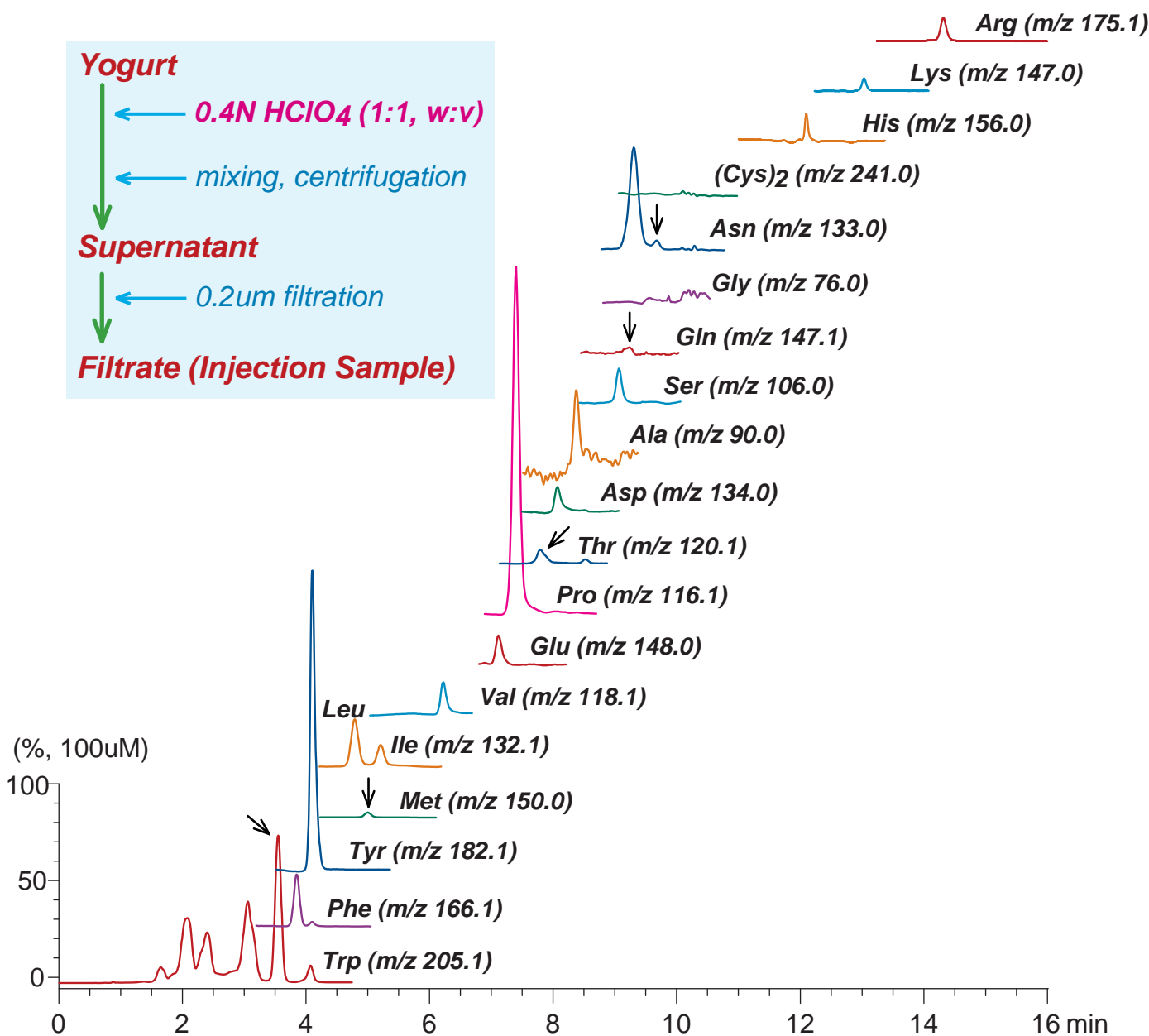
**Intrada** Amino Acid

100 x 3 mm

Application

### LC-MS: Amino acids in Yogurt

ヨーグルト中アミノ酸のLC-MS分析



Intrada Amino Acid, 100 x 3 mm

A: acetonitrile / tetrahydrofuran / 25mM HCOONH<sub>4</sub> / HCOOH = 9 / 75 / 16 / 0.3 (v/v/v/v)

B: acetonitrile / 100mM HCOONH<sub>4</sub> = 20 / 80 (v/v)

0 %B (0-3 min), 0-17 %B (3-9 min), 100 %B (9-15 min)

0.6 mL/min (9 MPa), 35 deg.C, 5 uL (0.2N HClO<sub>4</sub>)

Single Quad. MS (ESI, positive)