

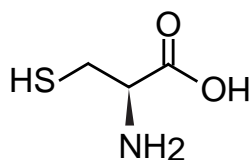
Intrada Amino Acid

50 x 3 mm

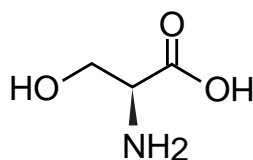
Application

LC-MS: Lysinoalanine related compounds

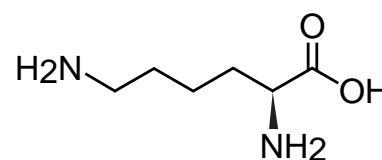
リジノアラニン関連化合物のLC-MS分析



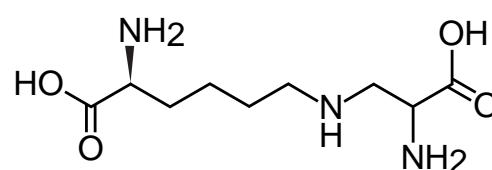
1 L-cysteine



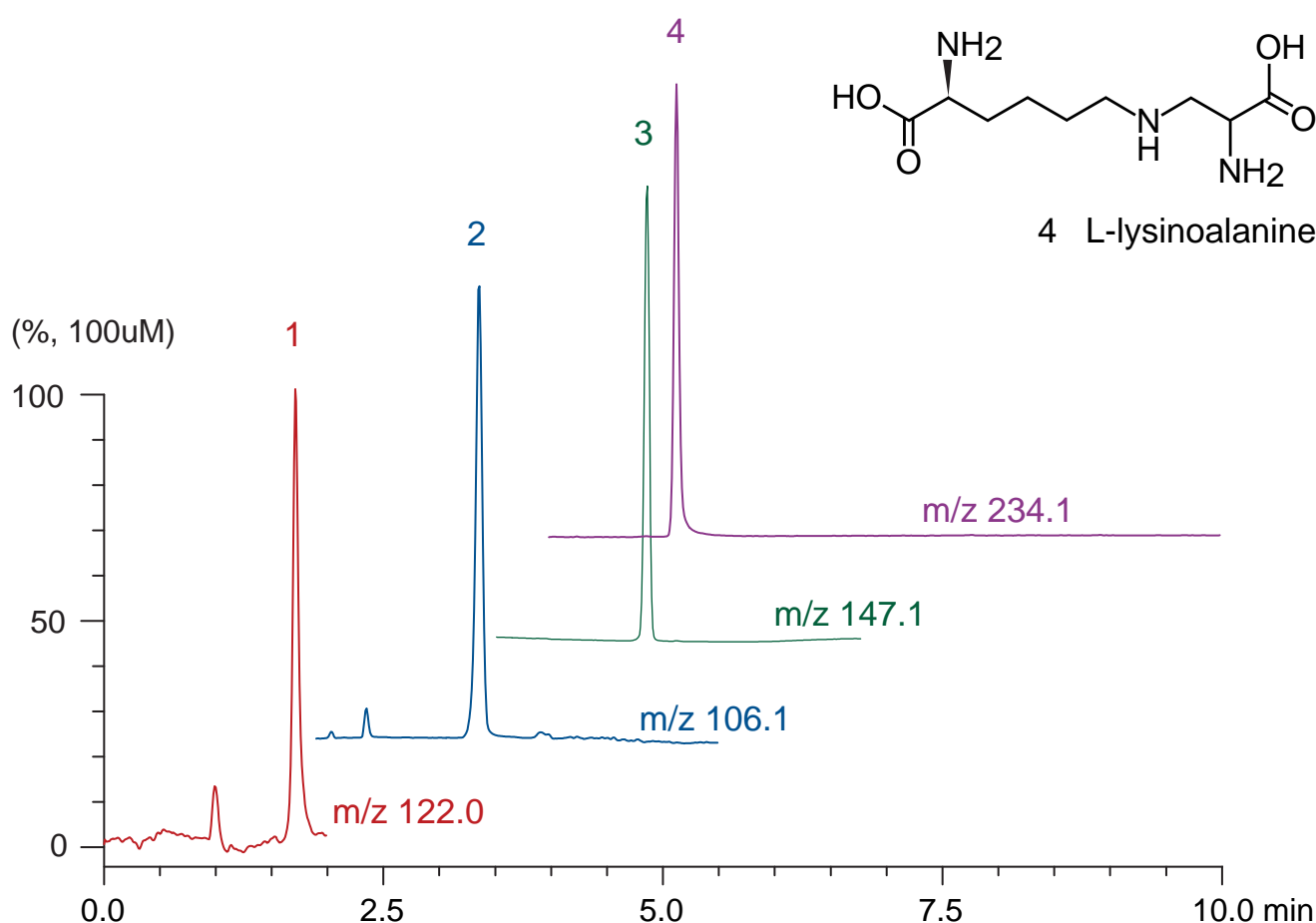
2 L-serine



3 L-lysine



4 L-lysinoalanine



Intrada Amino Acid, 50 x 3 mm

A: acetonitrile / formic acid = 100 / 0.3

B: 100 mM ammonium formate

15-100 %B (0-5 min), 100 %B (5-10 min)

0.6 mL/mL (4 MPa), 37 °C, 5 uL (100 nmol/mL, 0.1N HCl)

INSTRUMENT:

Shimadzu Nexera UHPLC System - Shimadzu LCMS-2020 (Single Quadrupole MS)

ESI, SIM, positive, Nebulizer gas: 1.5 L/min, Drying gas: 17 L/min

Heat block temp: 500 °C, DL temp: 300 °C