

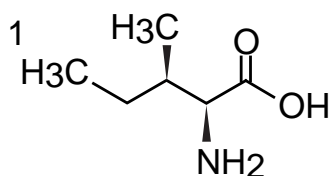
Scherzo SS-C18  
Intrada Amino Acid

150 x 3 mm

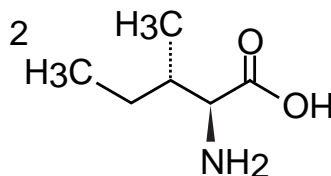
Application

### LC-MS: Leucine isomers

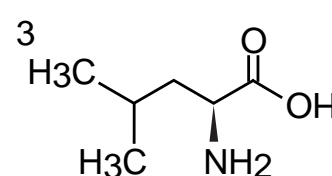
ロイシン異性体のLC-MS分析



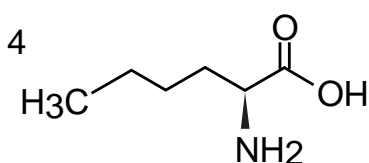
allo-L-isoleucine



L-isoleucine

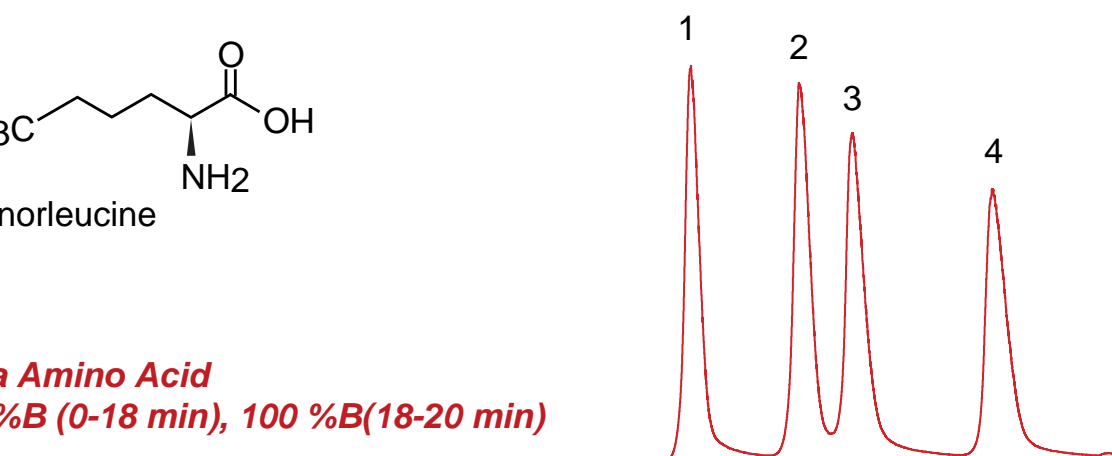


L-leucine

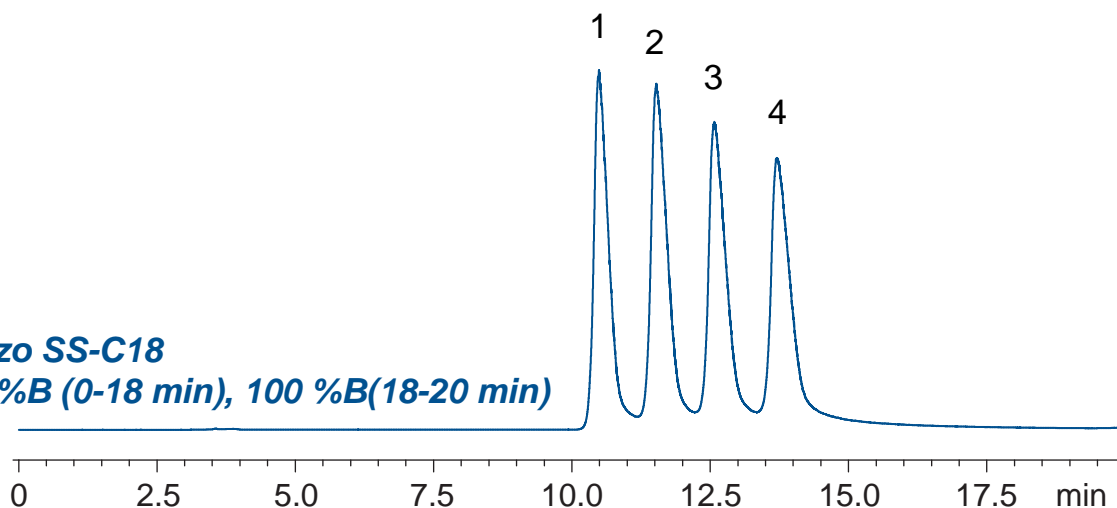


L-norleucine

**Intrada Amino Acid**  
25-28 %B (0-18 min), 100 %B(18-20 min)



**Scherzo SS-C18**  
15-20 %B (0-18 min), 100 %B(18-20 min)



150 x 3mm

A: water / formic acid = 100 / 0.3

B: methanol / 100mM ammonium formate = 20 / 80

0.6 mL/min (14 MPa), 37°C, 5 uL (1mM, 0.1N HCl)

Single Quad.MS (ESI, positive, m/z 132.0)