

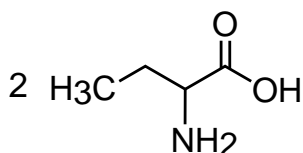
**Intrada** Amino Acid

150 x 3 mm

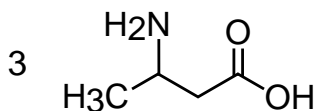
Application

**LC-MS: Glutamic acid and GABA isomers**

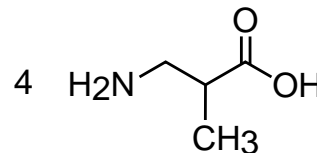
グルタミン酸およびGABA異性体のLC-MS分析



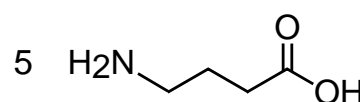
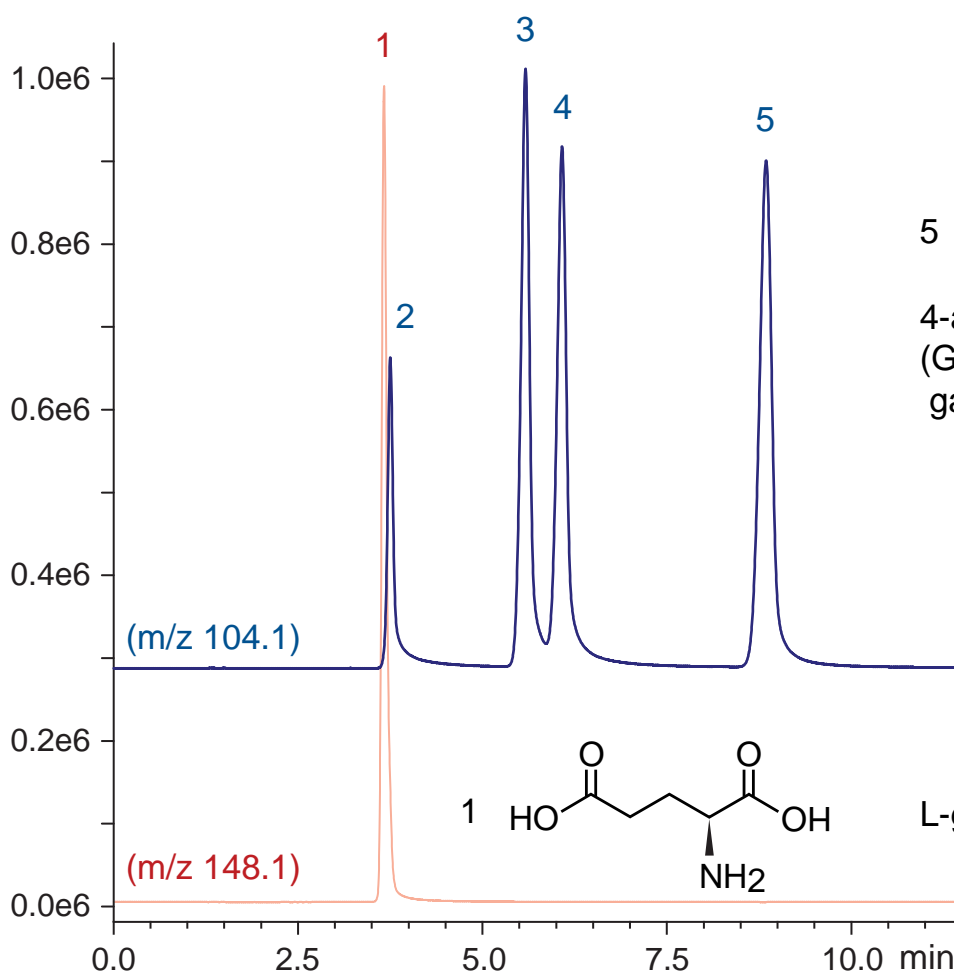
2-aminobutyric acid  
(alpha-aminobutyric acid)



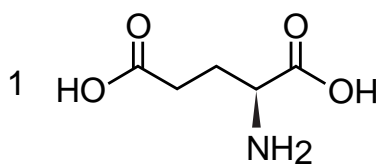
3-aminobutyric acid  
(beta-aminobutyric acid)



3-aminoisobutyric acid  
(beta-aminoisobutyric acid)



4-aminobutyric acid  
(GABA,  
gamma-aminobutyric acid)



L-glutamic acid

Intrada Amino Acid, 150 x 3 mm

A: acetonitrile / formic acid = 100 / 0.3

B: 100mM ammonium formate

30-35 %B (0-12 min), 100 %B (12-15 min)

0.5 mL/min (6 MPa), 60°C, 5uL (1000 nmol/mL, 0.1N HCl)

Single Quad. MS: ESI (SIM, positive)