

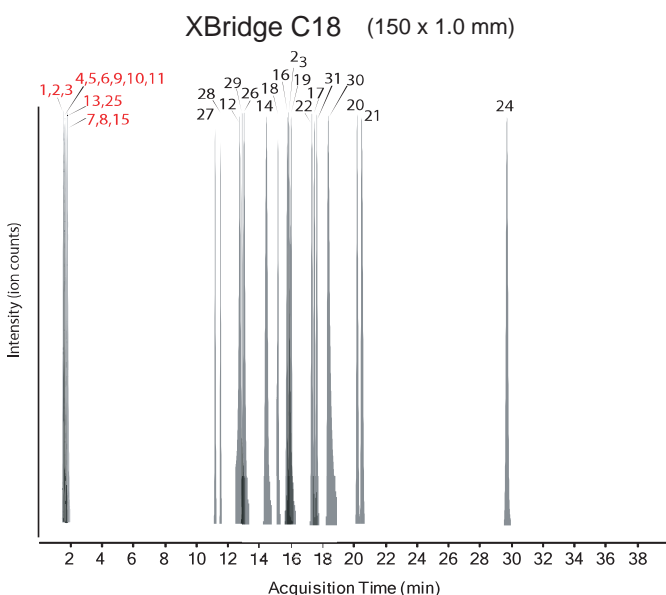
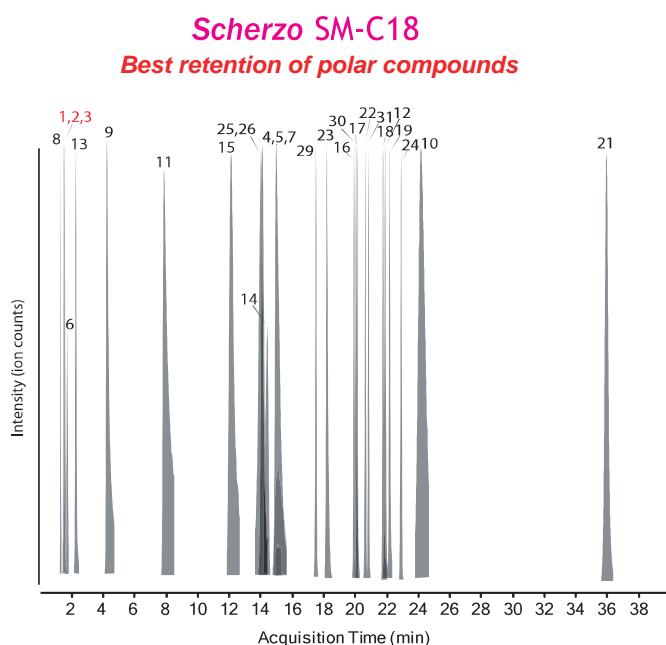
**Scherzo SM-C18**

150 x 2 mm

Application

Exploring different C18 stationary phases for metabolite profiling

代謝産物プロファイリングに関するC18カラム比較



1. alanine
2. *N,N*-dimethylglycine
3. serine
4. fumaric acid
5. succinic acid
6. cysteine
7. oxaloacetic acid
8. Gly-Gly
9. malic acid
10. alpha-ketoglutarate
11. citric acid
12. 2-methylhippuric acid
13. gamma-D-glutamylglycine
14. salbutomal
15. AMP
16. ribo-avin
17. Phe-Gly-Phe-Gly
18. *s*-(*p*-nitrobenzyl)glutathione
19. *s*-(*p*-azidophenacyl)glutathione
20. Taurocholic acid
21. *O*-beta-D-glucuronosyl-naphthol AS-BI
22. Leucine enkephalin
23. Arg-Pro-Pro-Gly-Phe (Bradykinin fragment 1-5)
24. Reserpine
25. GSSG
26. Arg-Lys-Asp-Val-Tyr (Thymopietin II fragment 32-36)
27. Coenzyme A
28. Acetyl CoA
29. Ala-Ser-Thr-Thr-Thr-Asn-Tyr-Thr (peptide T)
30. Arg-Pro-ProGly-Phe-Ser-Pro-Phe (bradykinin fragment 1-8)
31. Tyr-Tyr-Tyr-Tyr-Tyr

Scherzo SM-C18, 150 x 2 mm  
 A: 0.1% formic acid in water  
 B: 0.1% formic acid in acetonitrile  
 The linear gradient elution used started at 100% A (time 0-5 min) and finished at 100% B (35-40 min).  
 250 uL/min, room temp.  
 ESI-MS in positive and negative ionization mode

Ref.) Expanding Coverage of the Metabolome for Global Metabolite Profiling  
 Oscar Yanes, Ralf Tautenhahn, Gary J. Patti, and Gary Siuzdak  
 Analytical Chemistry, 2011, 83(6), pp 2152-2161

Courtesy of Oscar Yanes, Ph.D.  
 Metabolomics Platform of the Spanish Biomedical Research Centre  
 in Diabetes and Associated Metabolic Disorders (CIBERDEM),  
 University Rovira i Virgili, SPAIN