

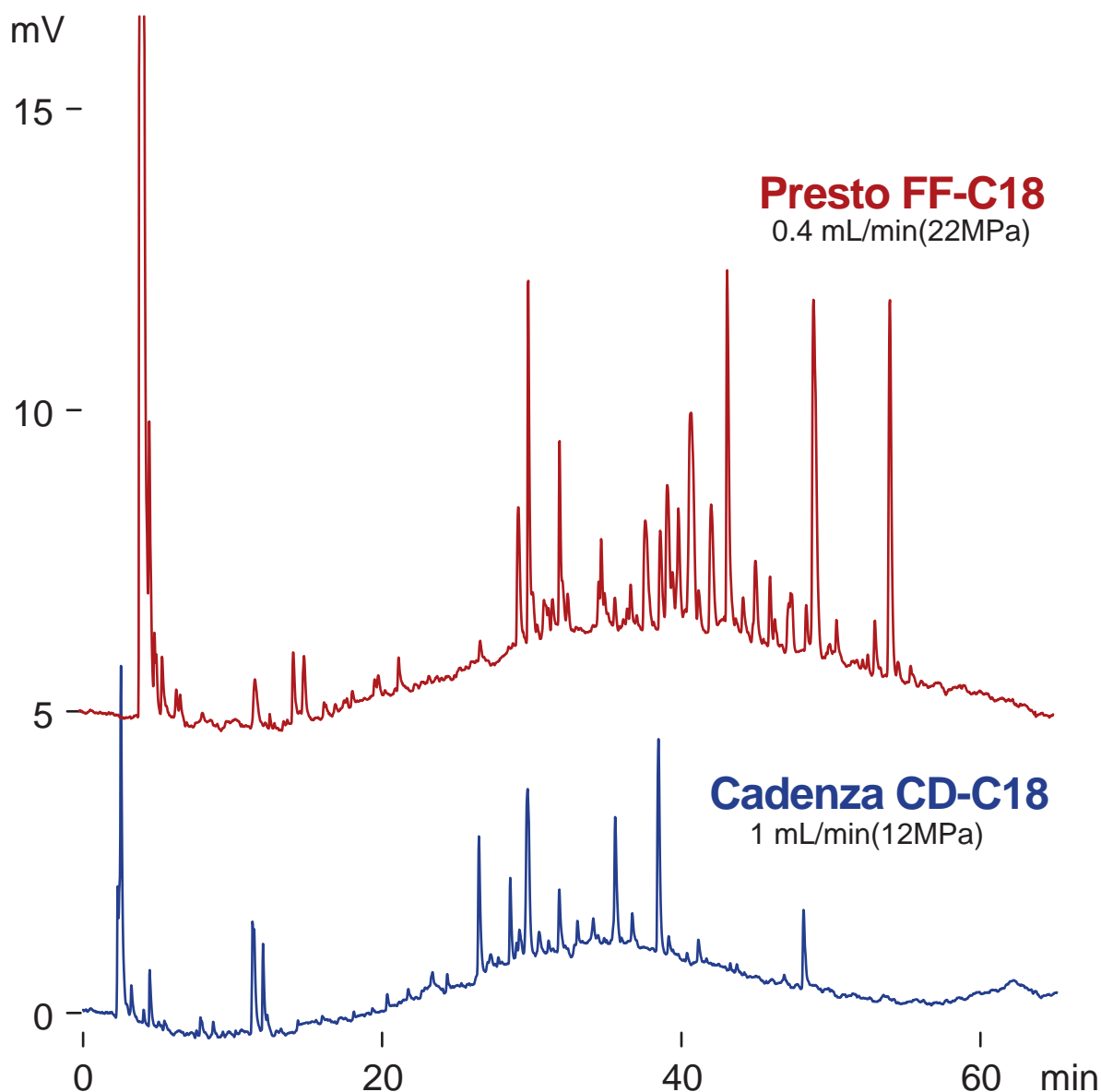
Presto FF-C18
Cadenza CD-C18

250 x 4.6 mm

Application

Peptide mapping (50°C, formic acid)

ギ酸移動相によるペプチドマッピング



250 x 4.6 mm

A: water / formic acid = 100 / 0.5

B: acetonitrile / formic acid = 100 / 0.5

2-50 %B (0-60min)

50 deg.C, ELSD(spray chamber 35 deg.C, drift tube 100 deg.C)

tryptic digest of alpha-casein 20 uL