

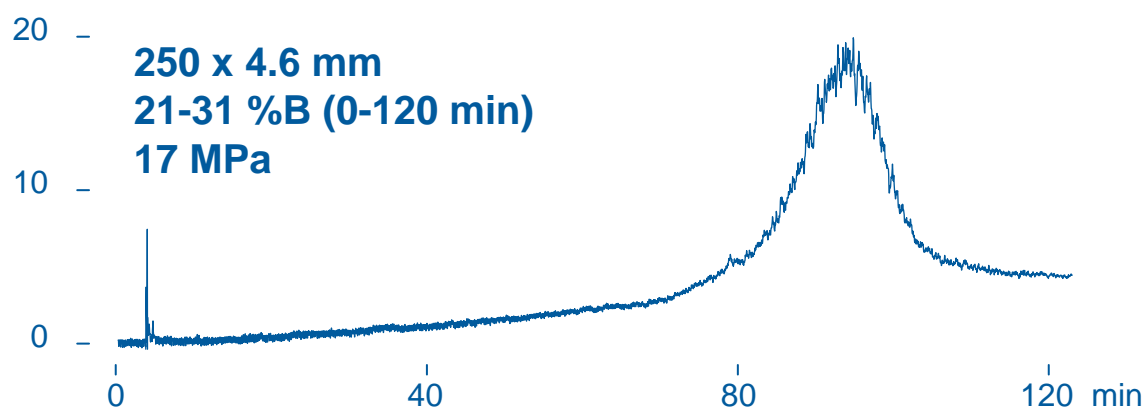
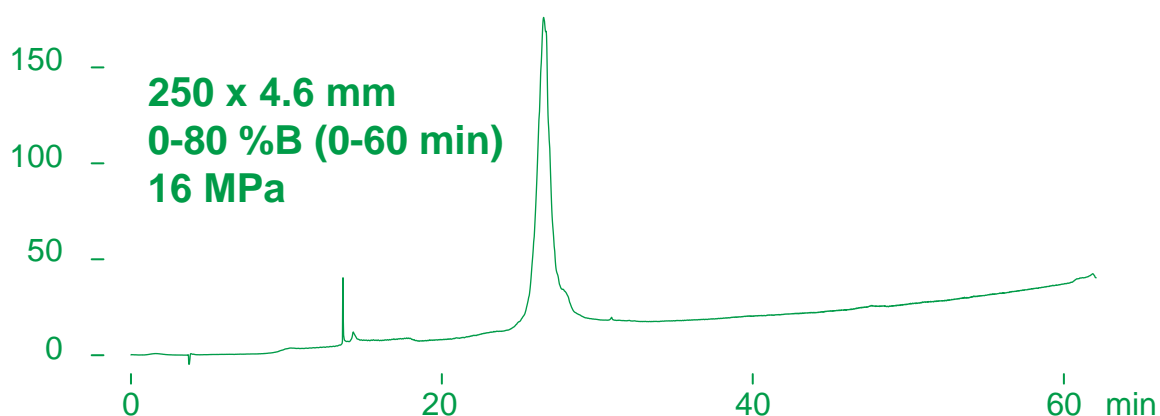
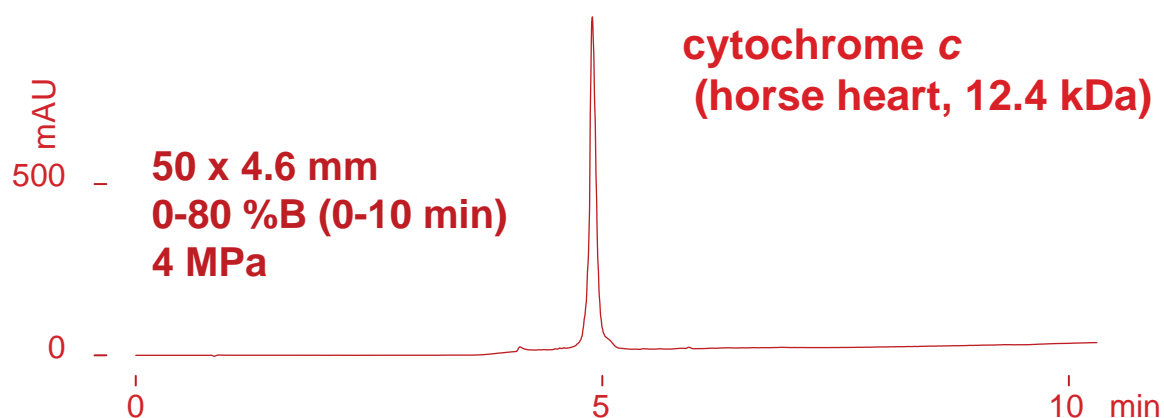
Presto FF-C18

50 x 4.6 mm  
250 x 4.6 mm

Application

## The effect of gradient slope and column length for cytochrome c separation

シトクロム c の分離に与えるグラジエント勾配とカラム長さの影響



Presto FF-C18

A: water / trifluoroacetic acid = 100 / 0.1

B: acetonitrile / trifluoroacetic acid = 100 / 0.1

0.4 mL/min, 80 deg.C, 220 nm, 0.6-3 uL (6-30 ug)