

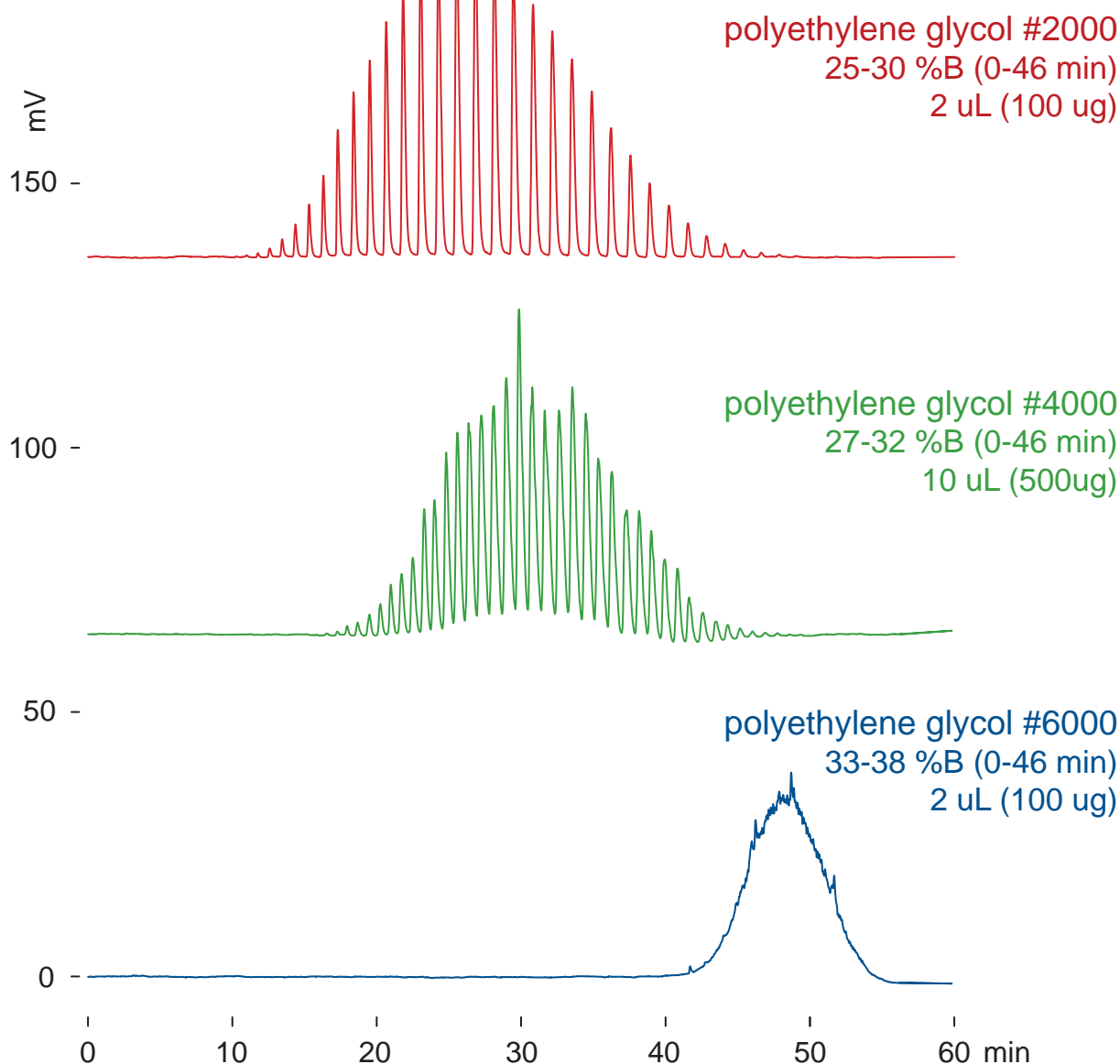
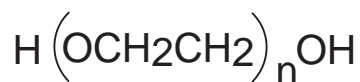
Cadenza CW-C18

250 x 4.6 mm

Application

**Polyethylene glycol (PEG)**

ポリエチレングリコール



Cadenza CW-C18, 250 x 4.6 mm  
 A: water, B: acetonitrile  
 1 mL/min (17-18 MPa), 37 deg.C  
 ELSD (spray chamber 50 deg.C, drift tube 100 deg.C)