

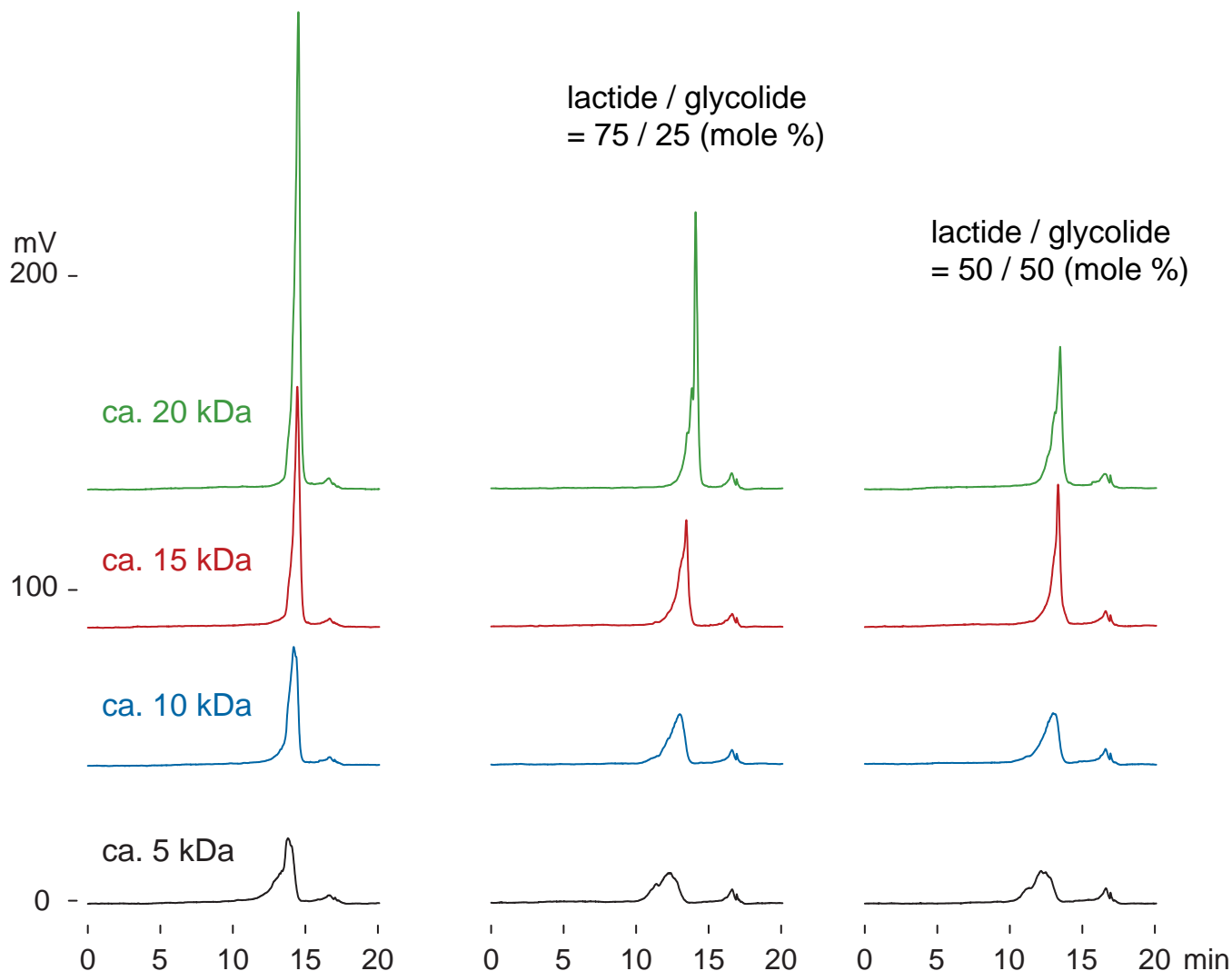
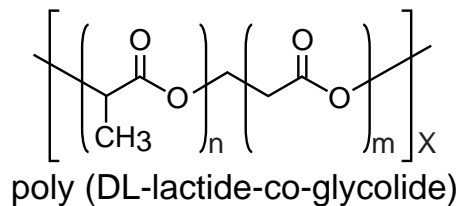
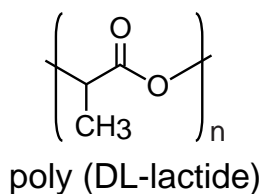
Cadenza CW-C18

150 x 3 mm

Application

**Biodegradable polymer
(poly (DL-lactide) and poly (DL-lactide-co-glycolide))**

生分解ポリマー (DL-乳酸ポリマー, DL-乳酸 / グリコール酸コポリマー)



Cadenza CW-C18, 150 x 3 mm

A: water / formic acid = 100 / 0.1

B: acetone / ethyl acetate / formic acid = 70 / 30 / 0.1

0-100 %B (0-15min), 0.6 mL/min (11MPa), 60 deg.C

ELSD (spray chamber 45 deg.C, drift tube 100 deg.C), 1 uL (10ug, THF)