

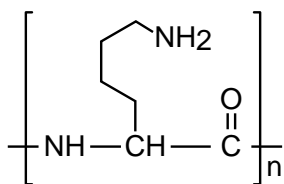
Presto FF-C18

250 x 4.6 mm

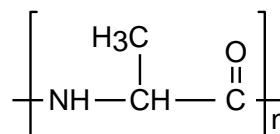
Application

Polyamino acids

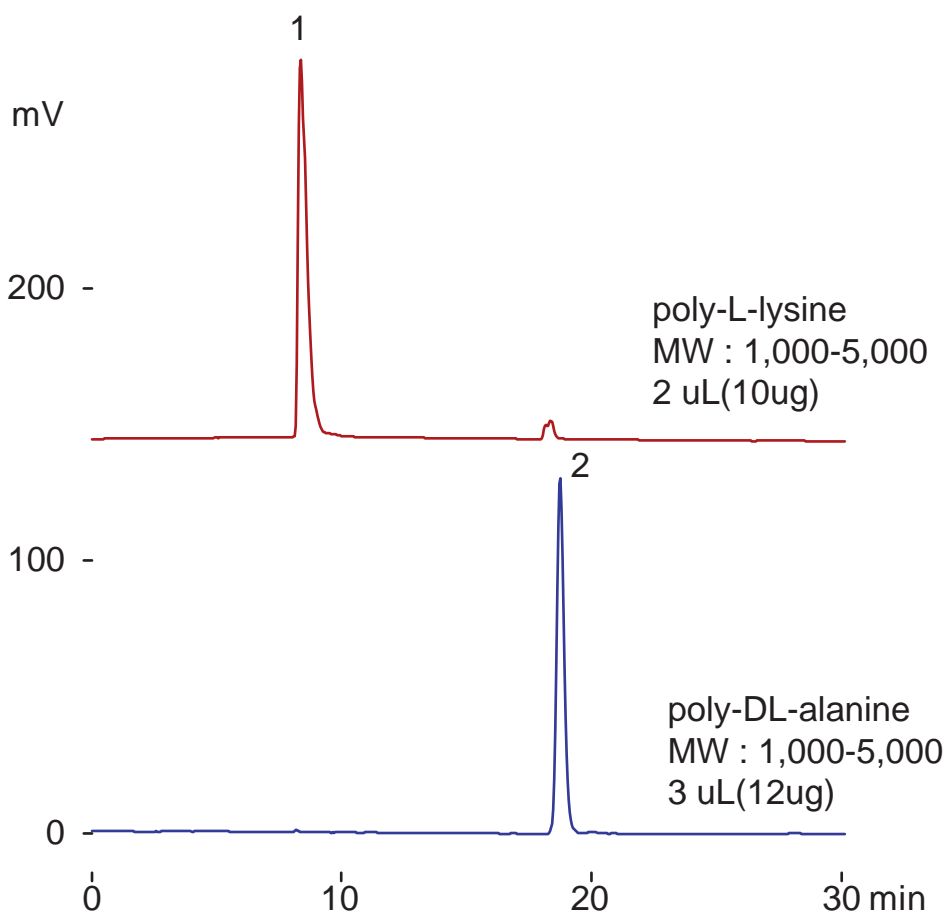
ポリアミノ酸



poly-L-lysine
MW : 1,000-5,000



poly-DL-alanine
MW : 1,000-5,000



Presto FF-C18, 250 x 4.6 mm

A: water / trifluoroacetic acid = 100 / 0.1

B: acetonitrile / trifluoroacetic acid = 100 / 0.1

0-60 %B (0-20min)

0.2 mL/min (13MPa), 37 deg.C

ELSD (spray chamber 15 deg.C, drift tube 80 deg.C)