

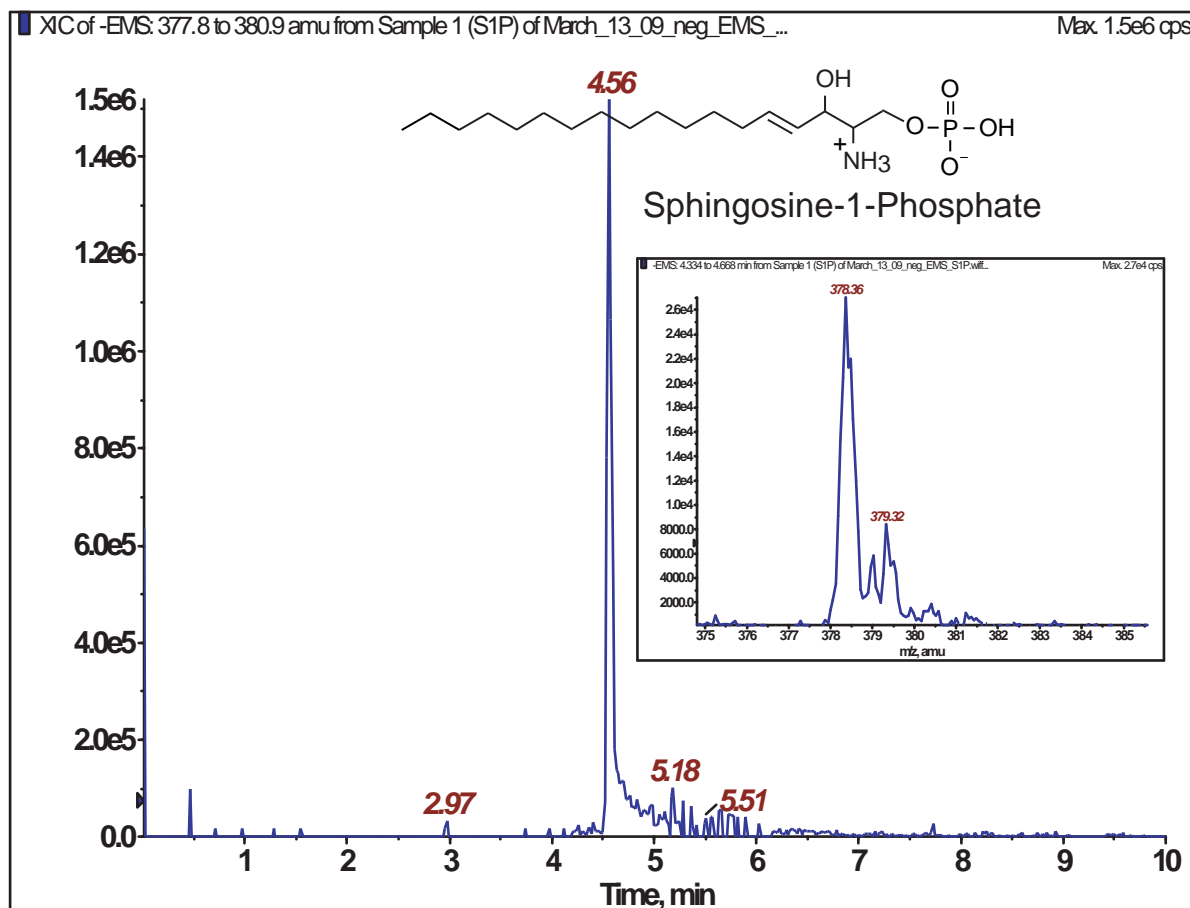
Cadenza CW-C18

150 x 2 mm

Application

LC-MS/MS Application for Sphingolipids (Sphingosine-1-PO4)

スフィンゴ脂質(スフィンゴシン-1-リン酸)のLC-MS/MS分析



Cadenza CW-C18, 150 x 2 mm

A: [water / HCOOH (100:0.2 v/v)] containing 7mM ammonium formate

B: [methanol / HCOOH (100:0.2 v/v)] containing 5mM ammonium formate

70-90%B (0-1min), 90%B (1-1.5min), 90-100%B (1.5-2.5min),

100%B (2.5-6min), 100-40%B (6-6.5min), 40%B (6.5-10min)

0.2mL/min - 0.28mL/min (0-6min), 0.2mL/min (6-10min)

48deg.C, 5uL (3ug / mL)

Applied Biosystems QTrap, ESI Negative

Courtesy of Jennifer Ro and Joe Williams  
Department of Evolution, Ecology, and Organismal Biology, Ohio State University - USA