

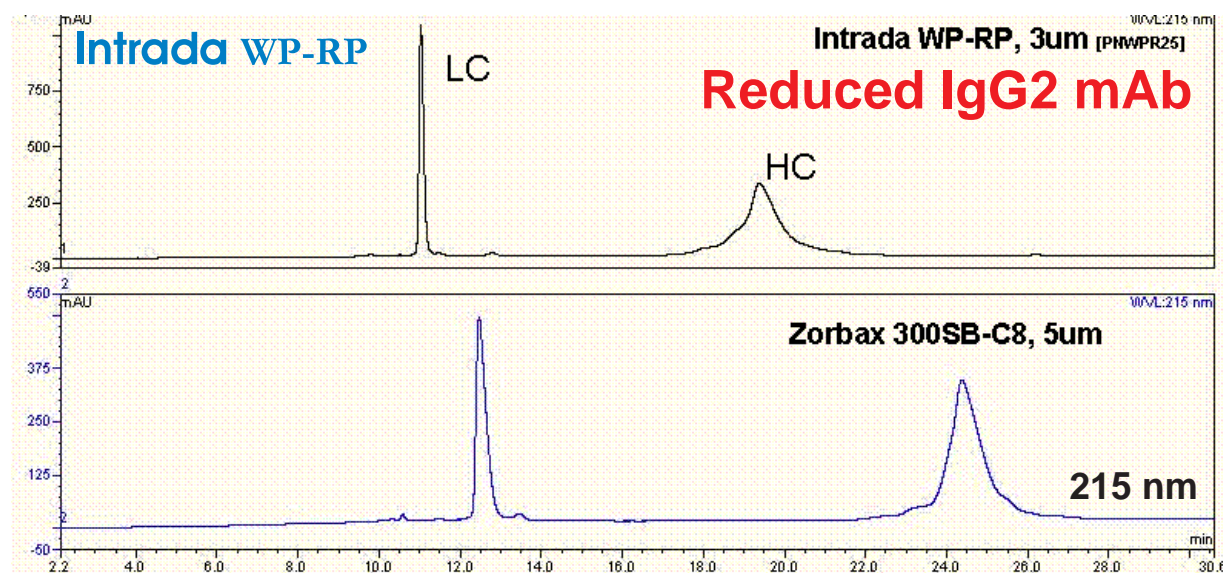
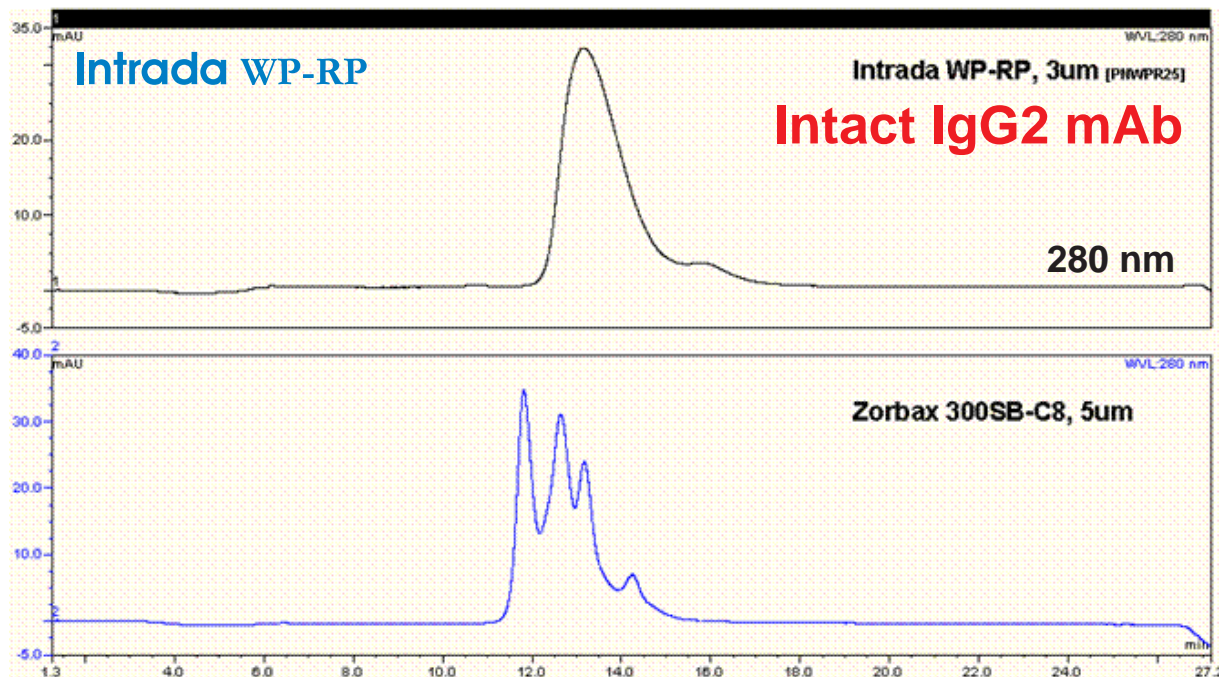
**Intrada WP-RP**

150 x 2 mm

Application

IgG2 mAb by reversed-phase analysis

IgG mAb の逆相分析



Ref.) T. M. Dillon ., P.V. Bondarenko, D.S. Rehder, G.D. Pipes, G. R. Kleemann, M.S. Ricci  
Journal of Chromatography A, 1120 (2006) 112-120

Intrada WP-RP, 150 x 2 mm

A: 0.1% TFA, B: IPA /ACN /water /TFA = 70 /20 /9.9 /0.1

10%B (0-2 min), 25%B (2-4 min), 25-32%B (4-25 min)

0.5 mL/min, 75 deg.C, 280 nm (upper) or 215nm (lower)

Courtesy of Dr.Thomas Dillon, AMGEN Inc., USA