

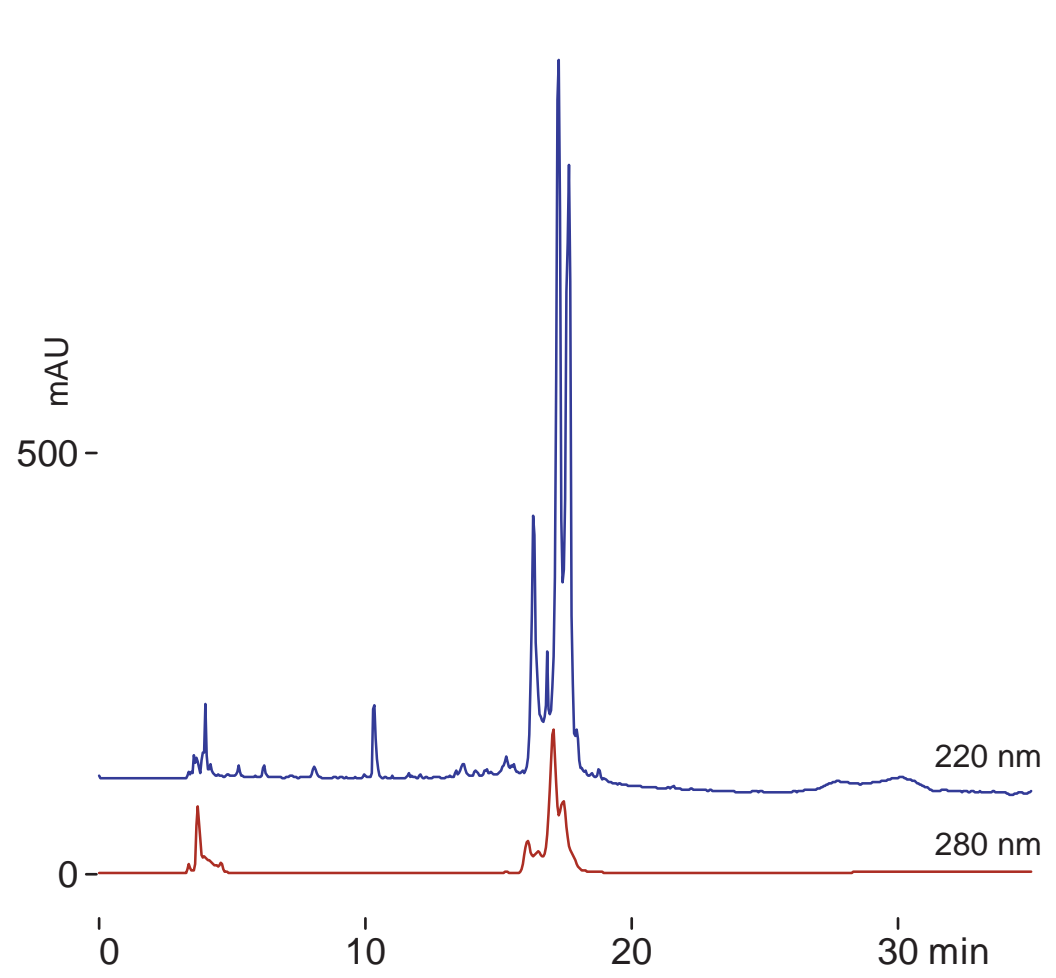
**Intrada WP-RP**

250 x 3 mm

Application

**Bovine Milk**

牛乳



Intrada WP-RP, 250 x 3 mm

A: water /trifluoroacetic acid = 100 /0.1,

B: acetonitrile /trifluoroacetic acid =100 /0.05

0-100%B (0-25min), 100%B(25-30min)

0.4 mL/min (12MPa), 37 deg.C, 5uL