

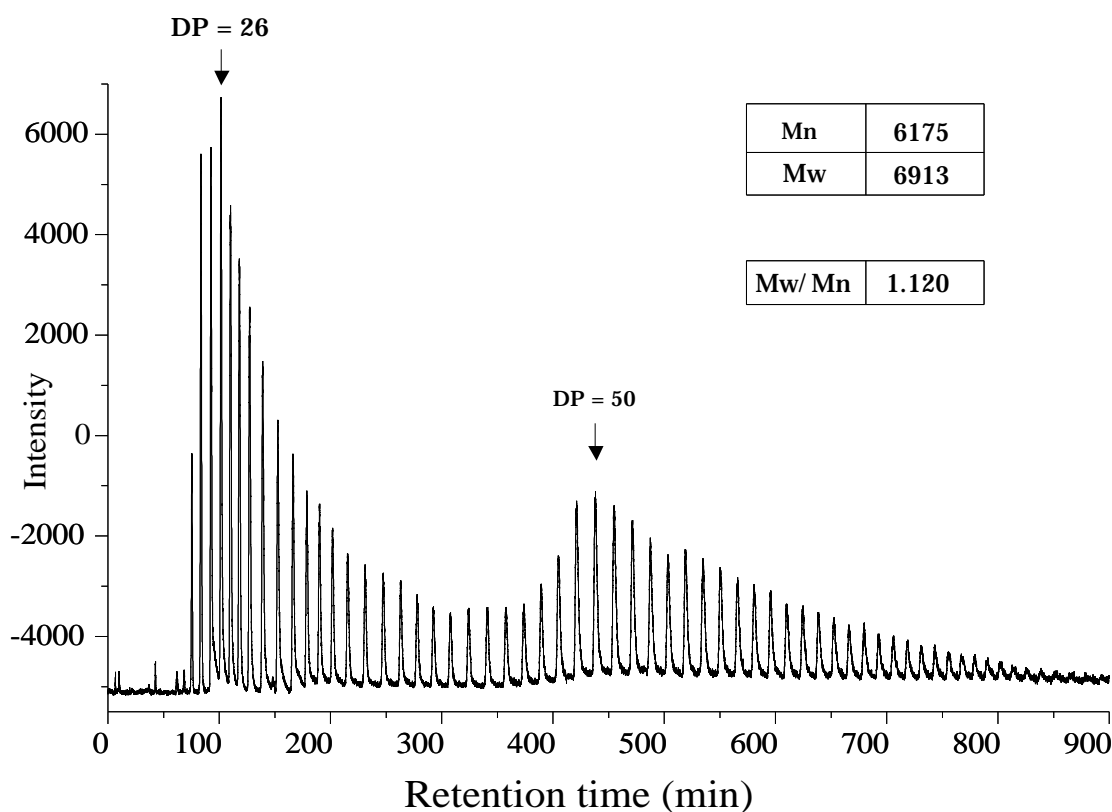
Cadenza CD-C18

500 x 4.6 mm

Application

cycloamylose (cyclic alpha-1,4-glucan)

シクロアミロース



Cadenza CD-C18, 500 x 4.6 mm  
 A: water, B: methanol, 3.5-6%B (0-780min)  
 0.5 mL/min, 35 deg.C, Corona CAD

Courtesy of Professor, Ph.D. KITAMURA Shinichi, OSAKA PREF. UNIV.