

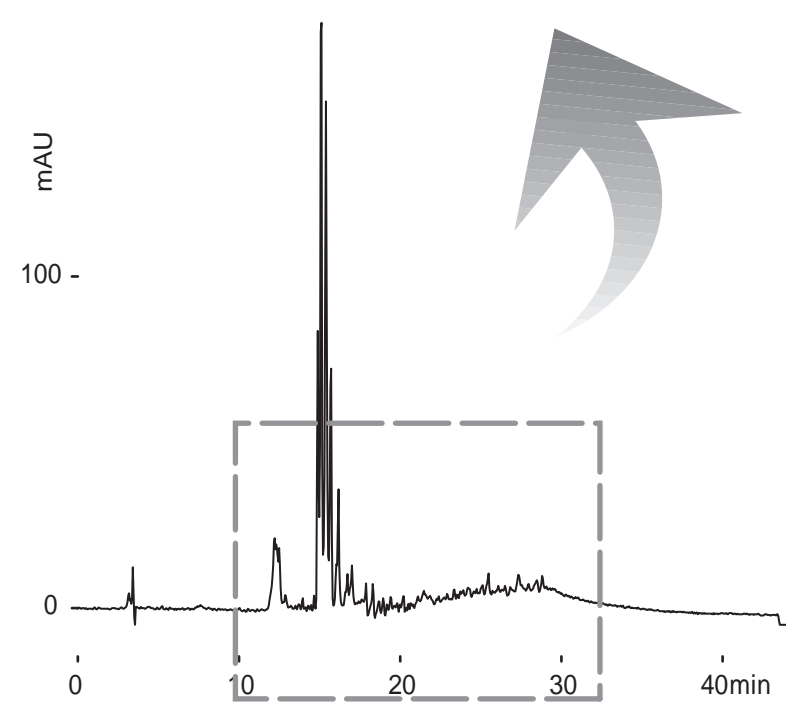
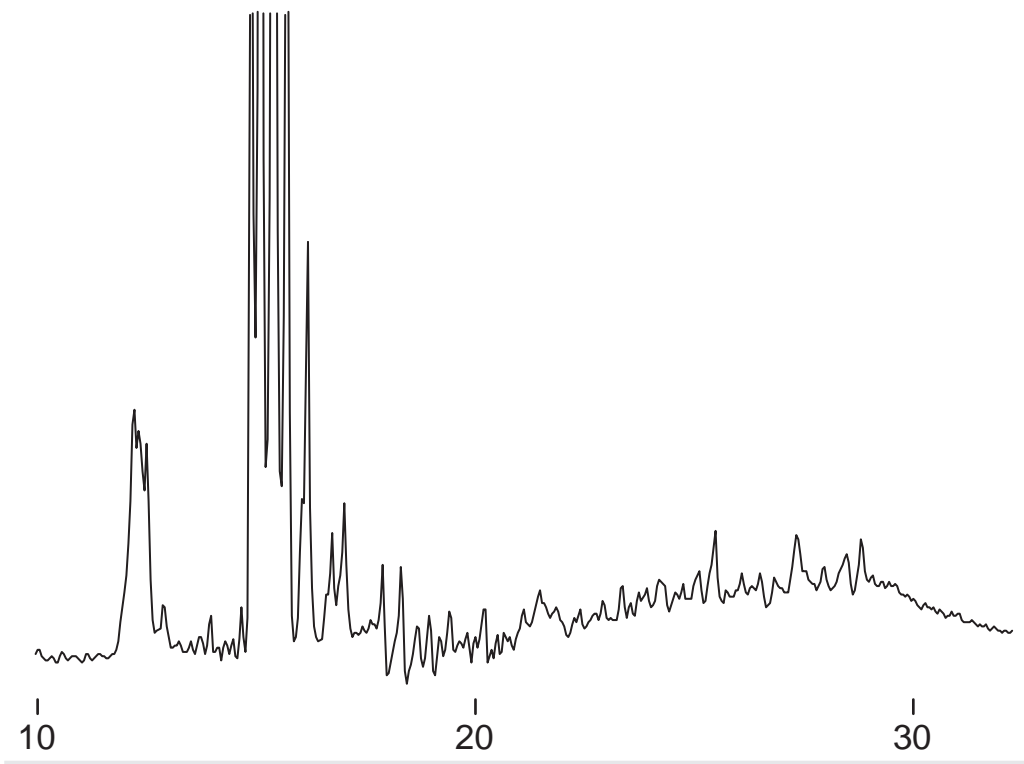
Intrada WP-RP

250 x 4.6 mm

Application

Bovin Serum

ウシ血清



Intrada WP- RP, 250 x 4.6 mm
A: water /TFA = 100 /0.1
B: acetonitrile /TFA = 100 /0.07
25-50%B (0-40min)
1.0 mL/min (16 MPa)
37 deg.C, 220 nm, 0.4 uL