

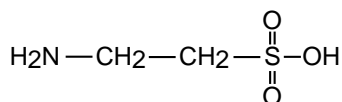
Unison UK-C18

75 x 4.6 mm

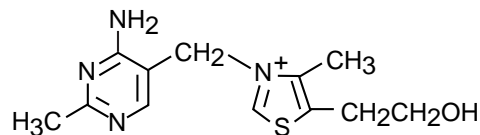
Application

ELSD application - taurine and water-soluble vitamins

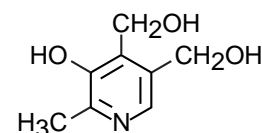
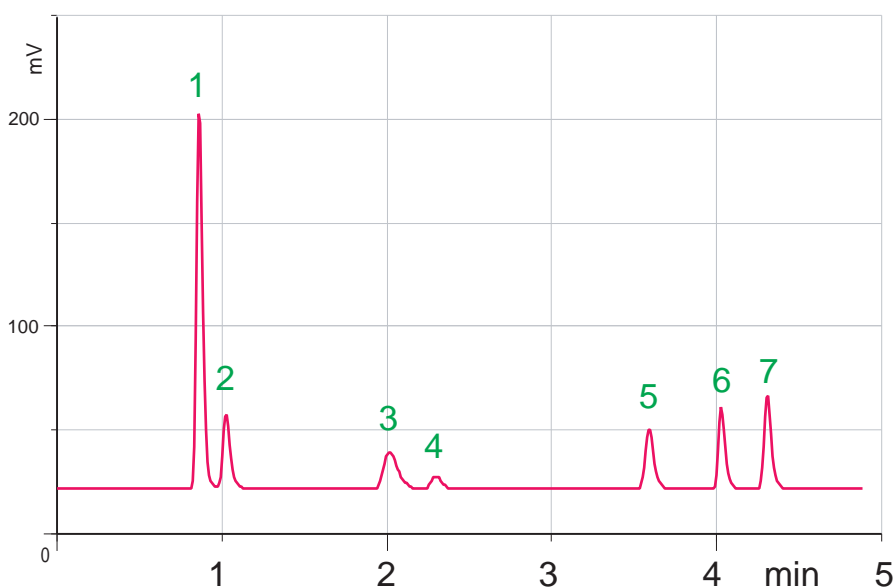
ELSD検出器によるタウリンと水溶性ビタミンの同時分析



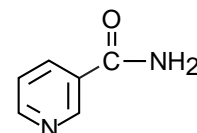
1 taurine



2 thiamine (B1)



3 pyridoxine (B6)



4 nicotinamide (B3)

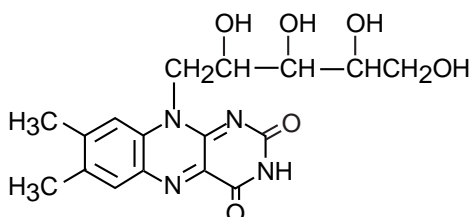
Unison UK-C18, 75 x 4.6 mm

A: 5mM HCOONH4

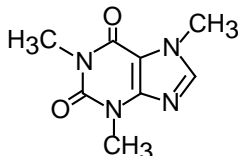
B: methanol

10-50%B (0-2min), 50%B (2-5min)

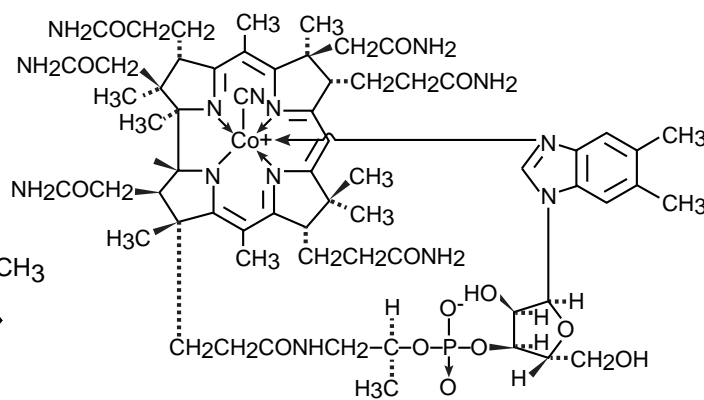
1 mL/min, 10uL(500ng), ELSD(SofTA)



7 riboflavin (B2)



6 caffeine



5 cyanocobalamin (B12)

Courtesy of Mr. Y.Sakai, M&S Instruments Trading Inc., Japan