

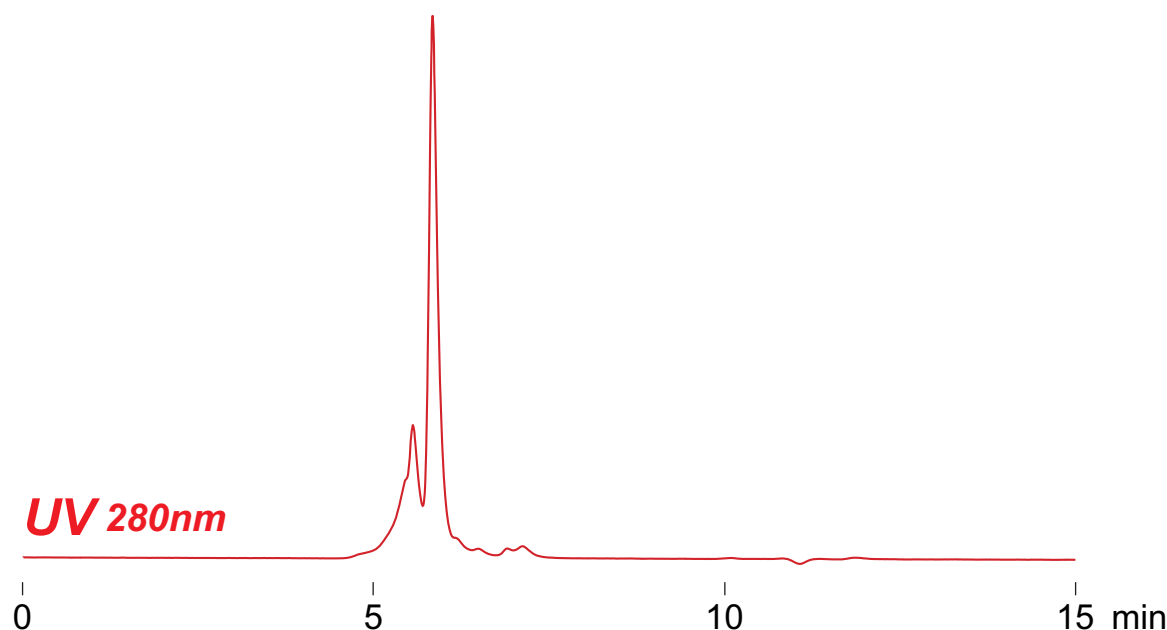
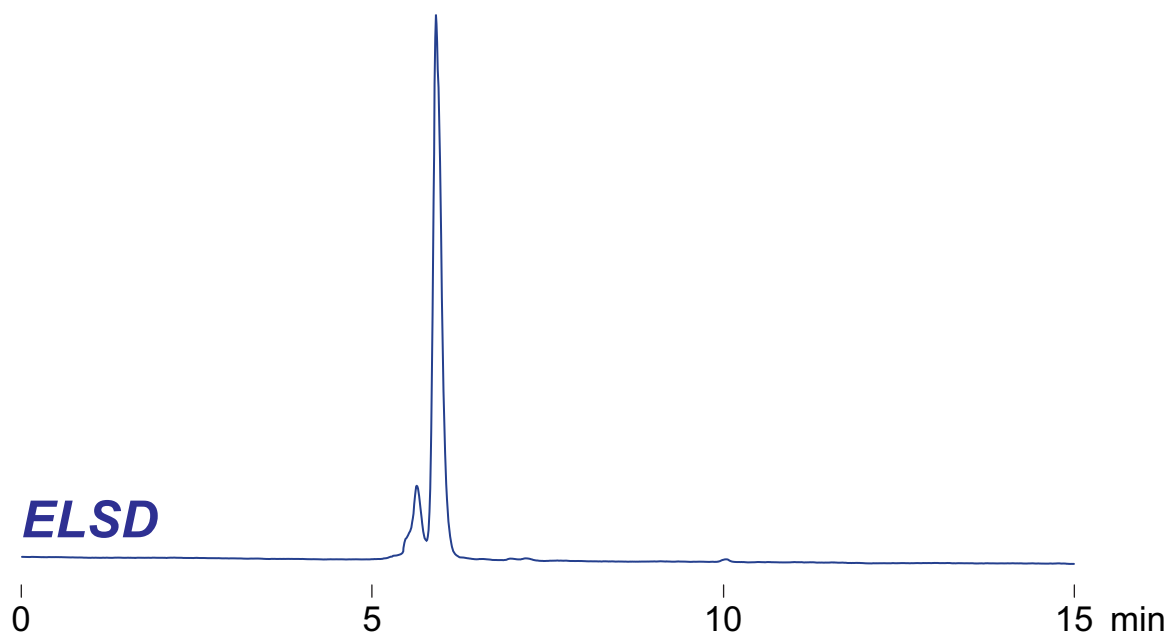
Intrada SEC

250 x 4.6 mm

Application

Lactoferrin, from bovin milk
ラクトフェリン(牛乳由来)

lactoferrin (bovin milk, 83 kDa)



*Intrada SEC, 250 x 4.6 mm
water / trifluoroacetic acid = 100 / 0.1
0.3mL/min (5MPa), 37°C
10μL (1mg/mL, water)*