

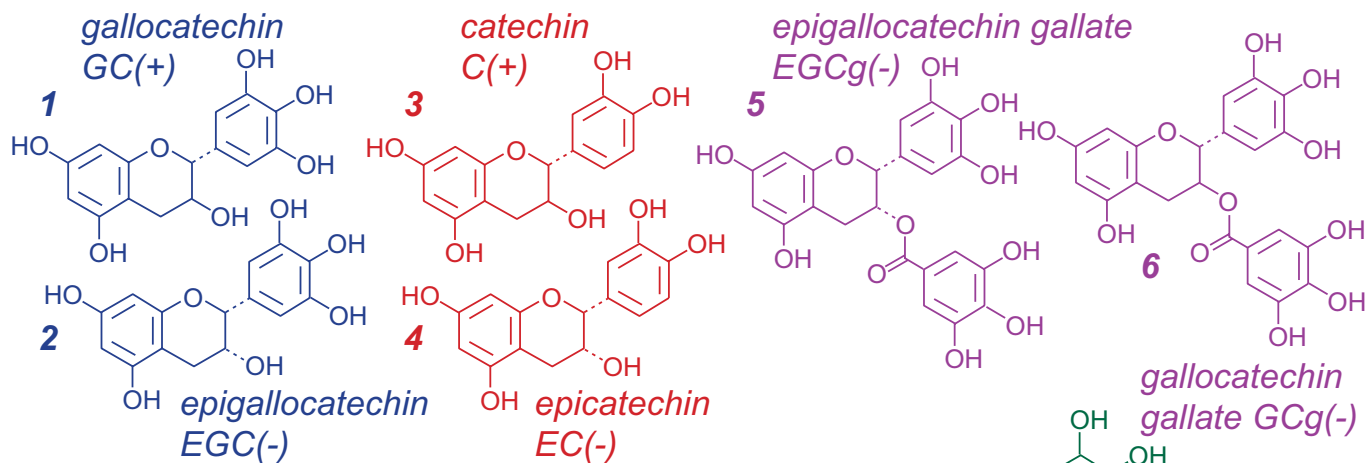
Unison UK-C18

150 x 3 mm

Application

LC-MS: Catechins in Black Tea with tea bag

ティーバッグ紅茶中のカテキン類のLC-MS分析



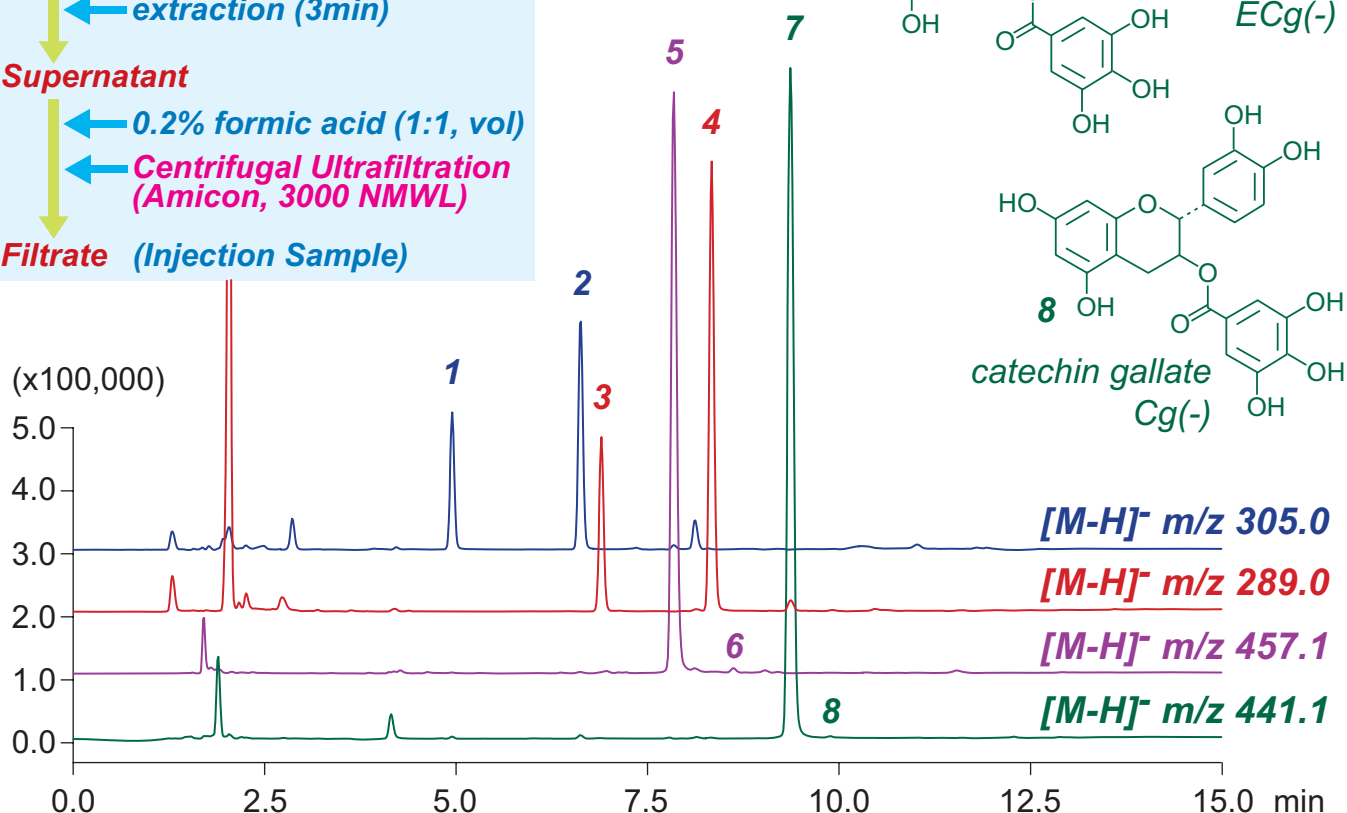
BlackTea with tea bag

- ← boiling water (2:150, w/v)
- ← extraction (3min)

Supernatant

- ← 0.2% formic acid (1:1, vol)
- ← Centrifugal Ultrafiltration (Amicon, 3000 NMWL)

Filtrate (Injection Sample)



Unison UK-C18, 150 x 3 mm

A: water / formic acid = 100 / 0.1

B: methanol / water / formic acid = 60 / 40 / 0.1

20%B (0-1min), 20-100%B (1-12min), 100%B (12-15min)

0.4mL/min (9MPa), 37°C, 5µL

MS (ESI, SIM, Negative)