

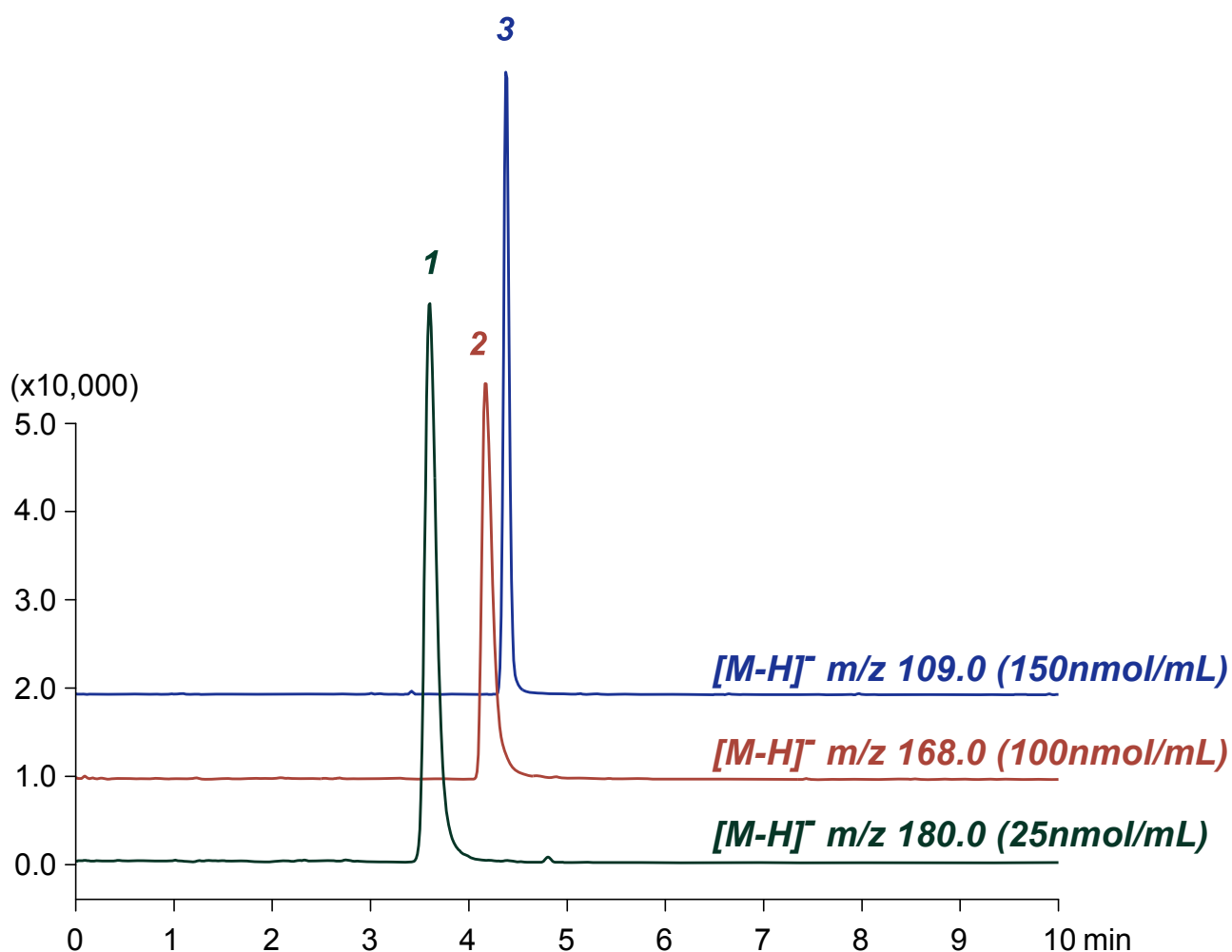
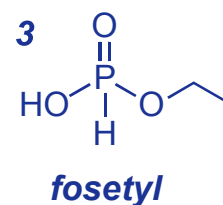
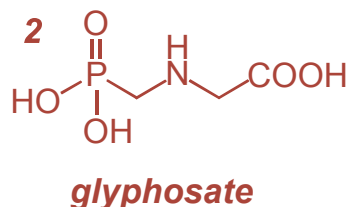
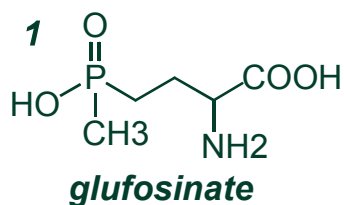
**Intrada** Organic Acid

150 x 2 mm

Application

LC-MS: Organophosphorus pesticides/herbicides

有機リン系農薬のLC-MS分析



*Intrada Organic Acid, 150 x 2 mm*

*A: methanol / water / formic acid = 20 / 80 / 0.3*

*B: 100mM ammonium formate*

*0%B (0-1min), 0-100%B (1-4min), 100%B (4-10min)*

*0.2 mL/min (16MPa), 37°C, 10 µL (25-150nmol/mL, water)*

*Single Quad. MS (ESI)*