

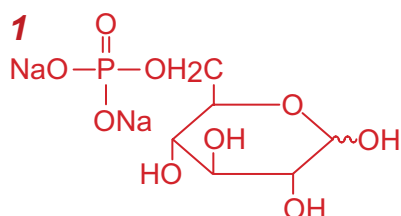
Intrada Organic Acid

250 x 2 mm

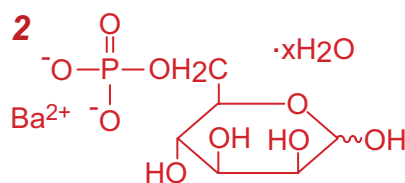
Application

LC-MS: Sugar phosphates

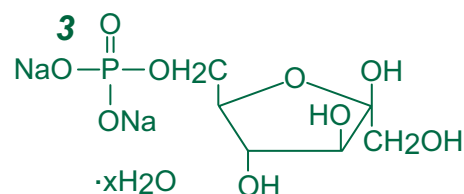
糖リン酸のLC-MS分析



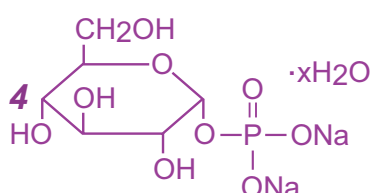
glucose 6-phosphate, G6P
(9.8 µg/mL)



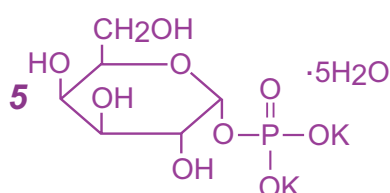
mannose 6-phosphate, M6P
(33.8 µg/mL)



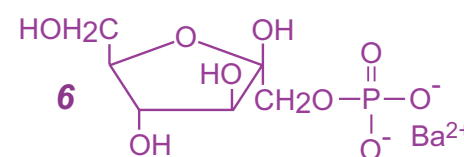
fructose 6-phosphate, F6P
(17.0 µg/mL)



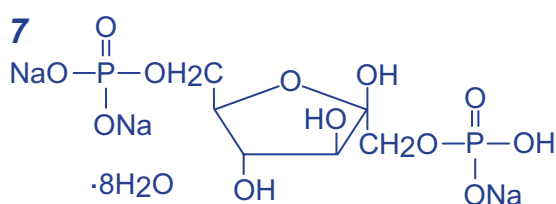
glucose 1-phosphate, G1P
(11.6 µg/mL)



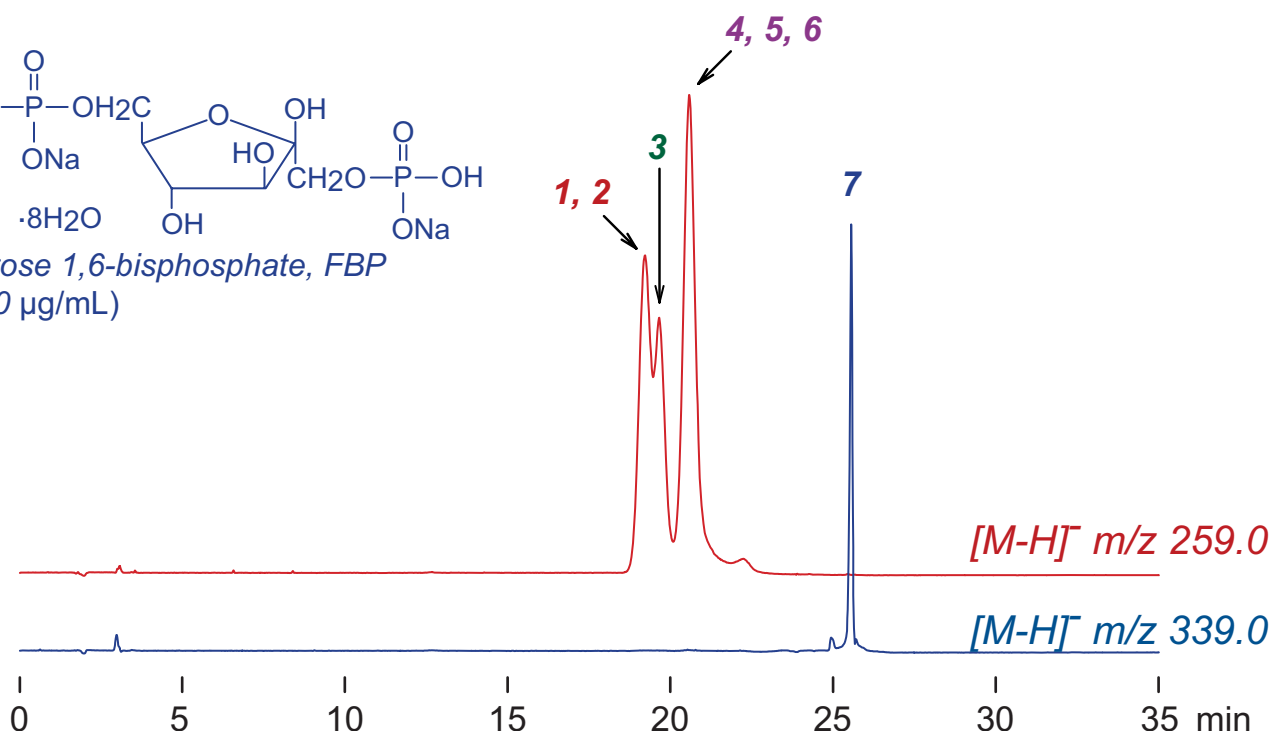
galactose 1-phosphate, Gal-1-P
(12.0 µg/mL)



fructose 1-phosphate, F1P
(32.8 µg/mL)



fructose 1,6-bisphosphate, FBP
(60.0 µg/mL)



Intrada Organic Acid, 250 x 2 mm

A: acetonitrile / water / formic acid = 30 / 70 / 0.5

B: acetonitrile / 100mM ammonium formate = 10 / 90

0%B (0-20min), 0-90%B (20-22min), 90%B (22-35min)

0.2mL/min (12MPa), 60°C, MS (ESI, SIM)

5µL (0.1% HCOOH)