

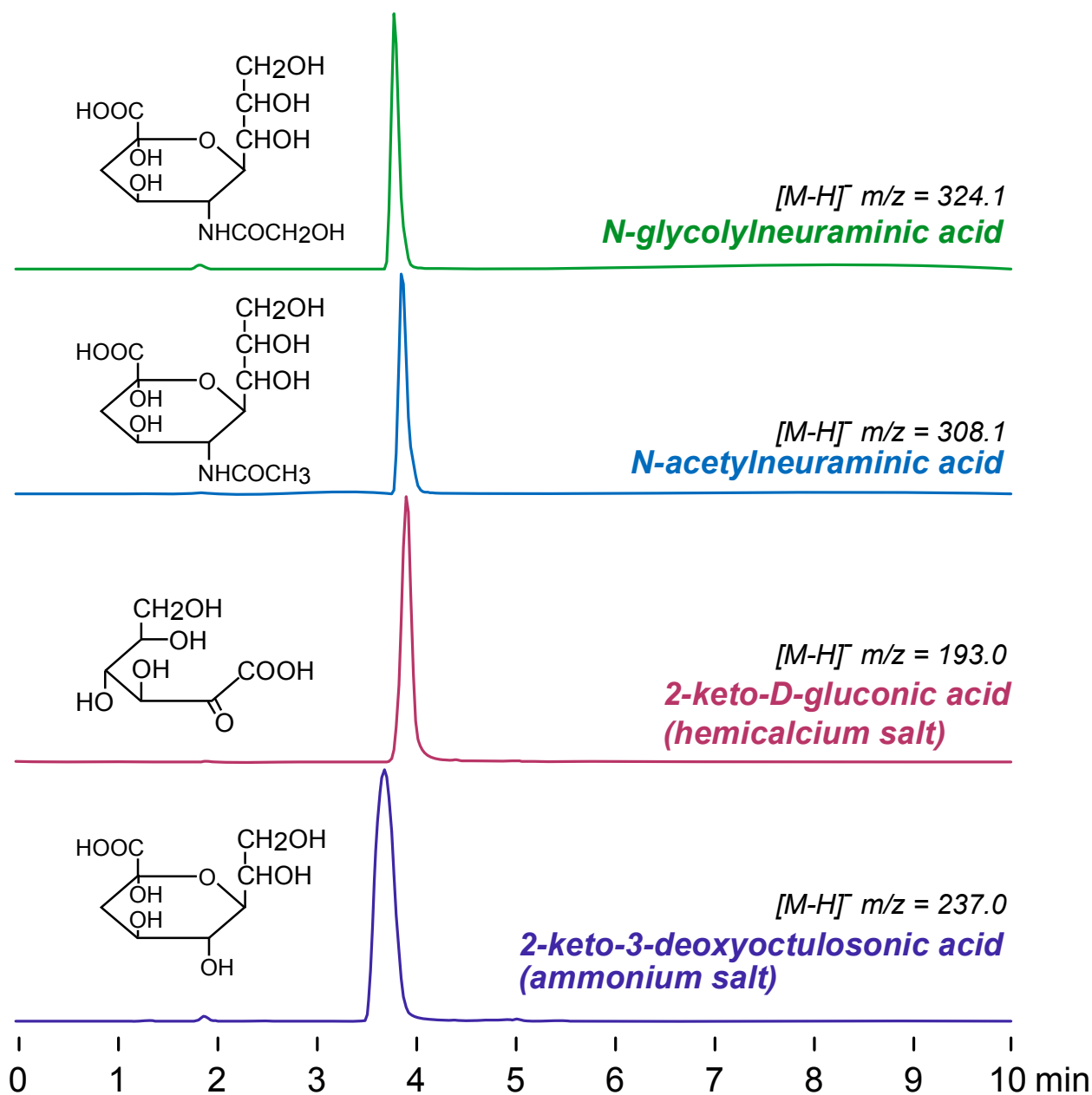
**Intrada Organic Acid**

150 x 2 mm

Application

**LC-MS: Sugar acids**

糖酸のLC-MS分析



*Intrada Organic Acid, 150 x 2 mm*

*A: acetonitrile / water / formic acid = 10 / 90 / 0.1*

*B: acetonitrile / 100mM ammonium formate = 10 / 90*

*0%B (0-1min), 0-100%B (1-7min), 100%B (7-10min)*

*0.2mL/min (10MPa), 50°C, MS (ESI, SIM, Negative)*

*5µL (100µg/mL in 0.1% HCOOH)*