

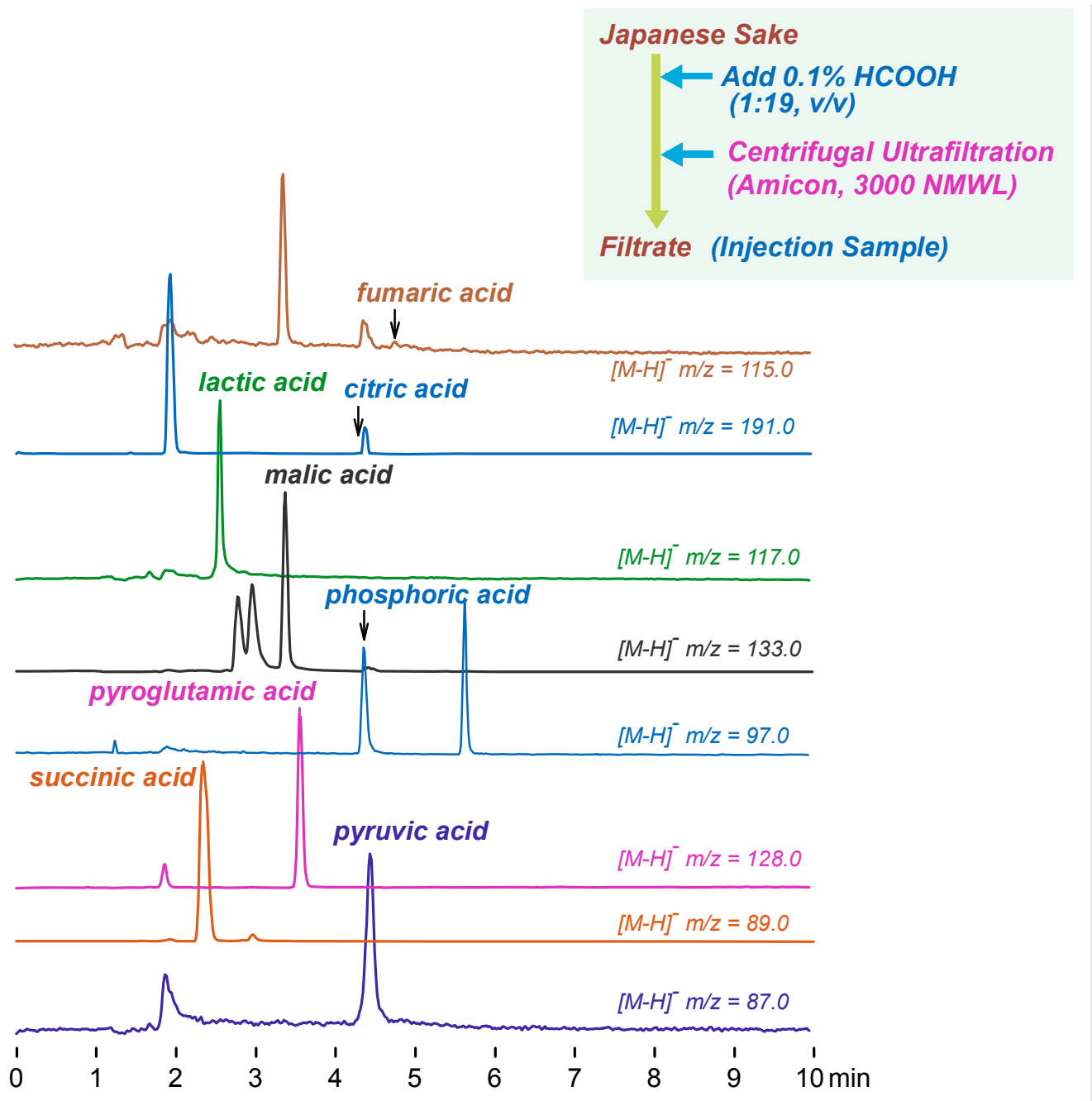
**Intrada** Organic Acid

150 x 2 mm

Application

**LC-MS: Organic acids in Japanese Sake**

日本酒中の有機酸のLC-MS分析



*Intrada Organic Acid, 150x2mm*  
 A: acetonitrile / water / HCOOH = 10 / 90 / 0.1  
 B: acetonitrile / 100mM HCOONH4 = 10 / 90  
 0%B (0-1min), 0-100%B (1-7min), 100%B (7-10min)  
 0.2mL/min (12MPa), 37°C, 5µL  
 MS (ESI, SIM, Negative)