

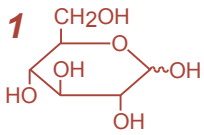
Unison UK-Amino MF

250 x 2 mm

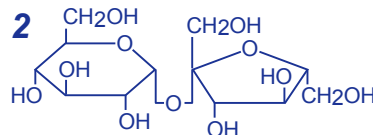
Application

LC-MS: Energy Drink (Brand-RB)

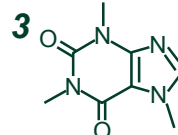
エナジードリンク (ブランド-RB) のLC-MS分析



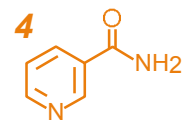
glucose
[M+AcO]⁻ m/z=239.0



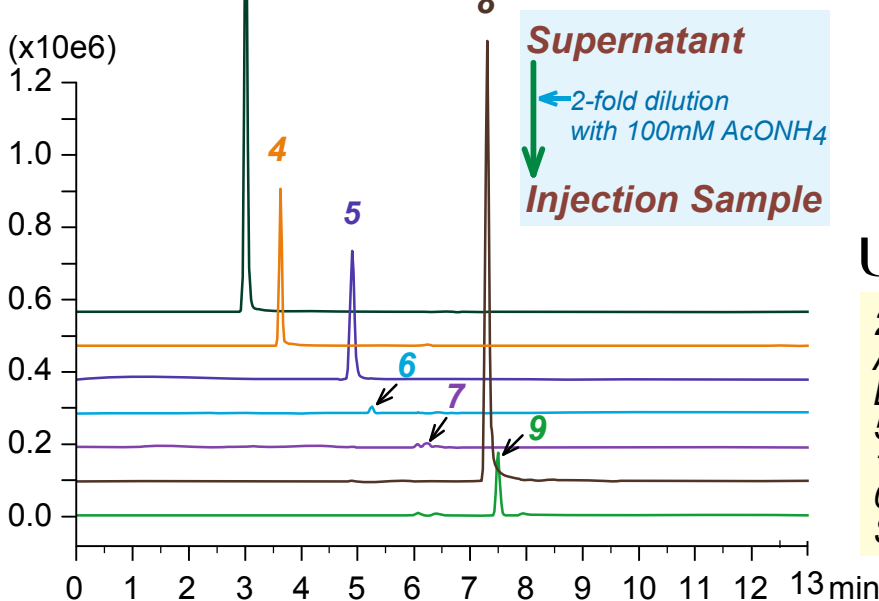
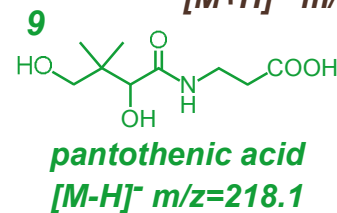
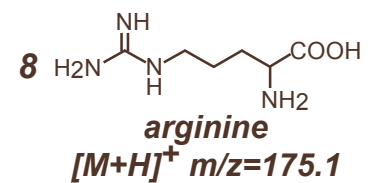
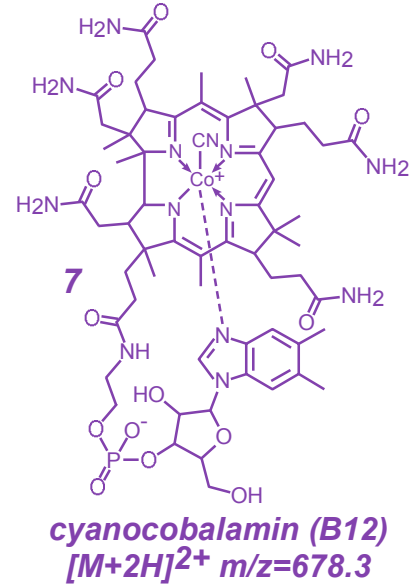
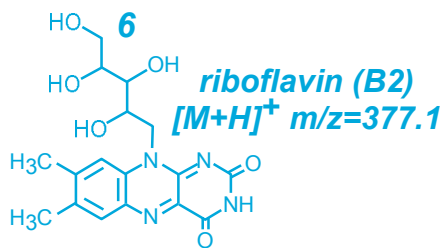
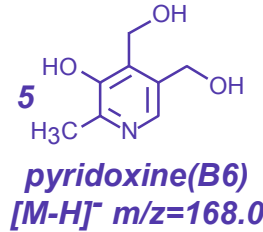
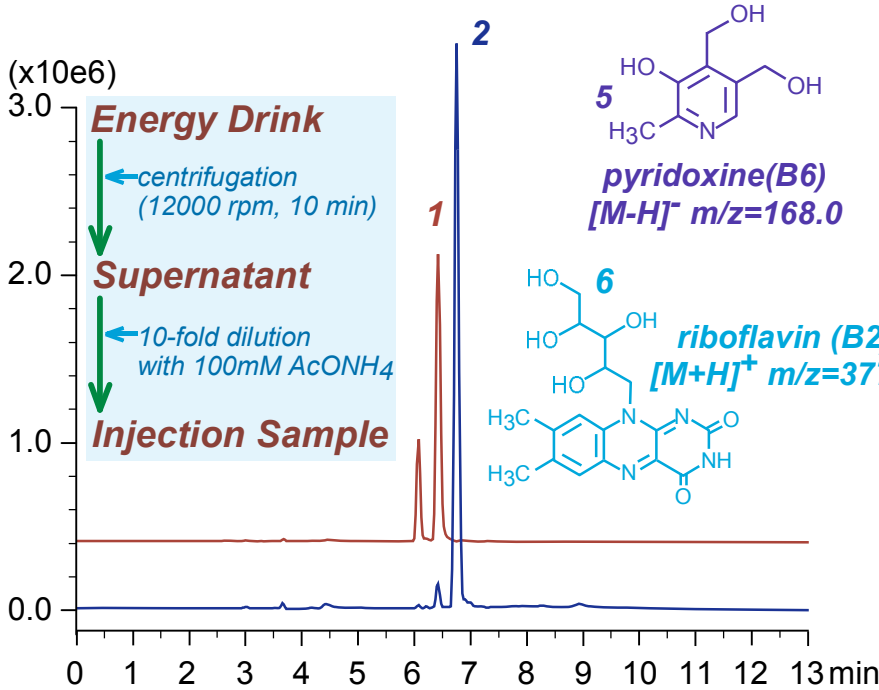
sucrose
[M+AcO]⁻ m/z=401.1



caffeine
[M+H]⁺ m/z=195.1



nicotinamide
[M+H]⁺ m/z=123.0



Unison UK-Amino MF

250 x 2 mm
A: acetonitrile
B: 100mM ammonium acetate
5-100%B (0-10 min)
100%B (10-13 min)
0.2 mL/min (6 MPa), 37°C, 1 μL
Single Quad. MS (ESI)