

Cadenza CW-C18

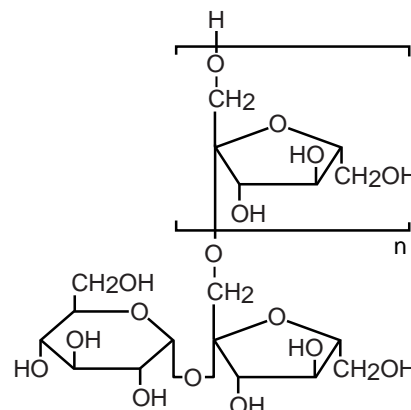
Unison UK-Amino

250 x 4.6 mm

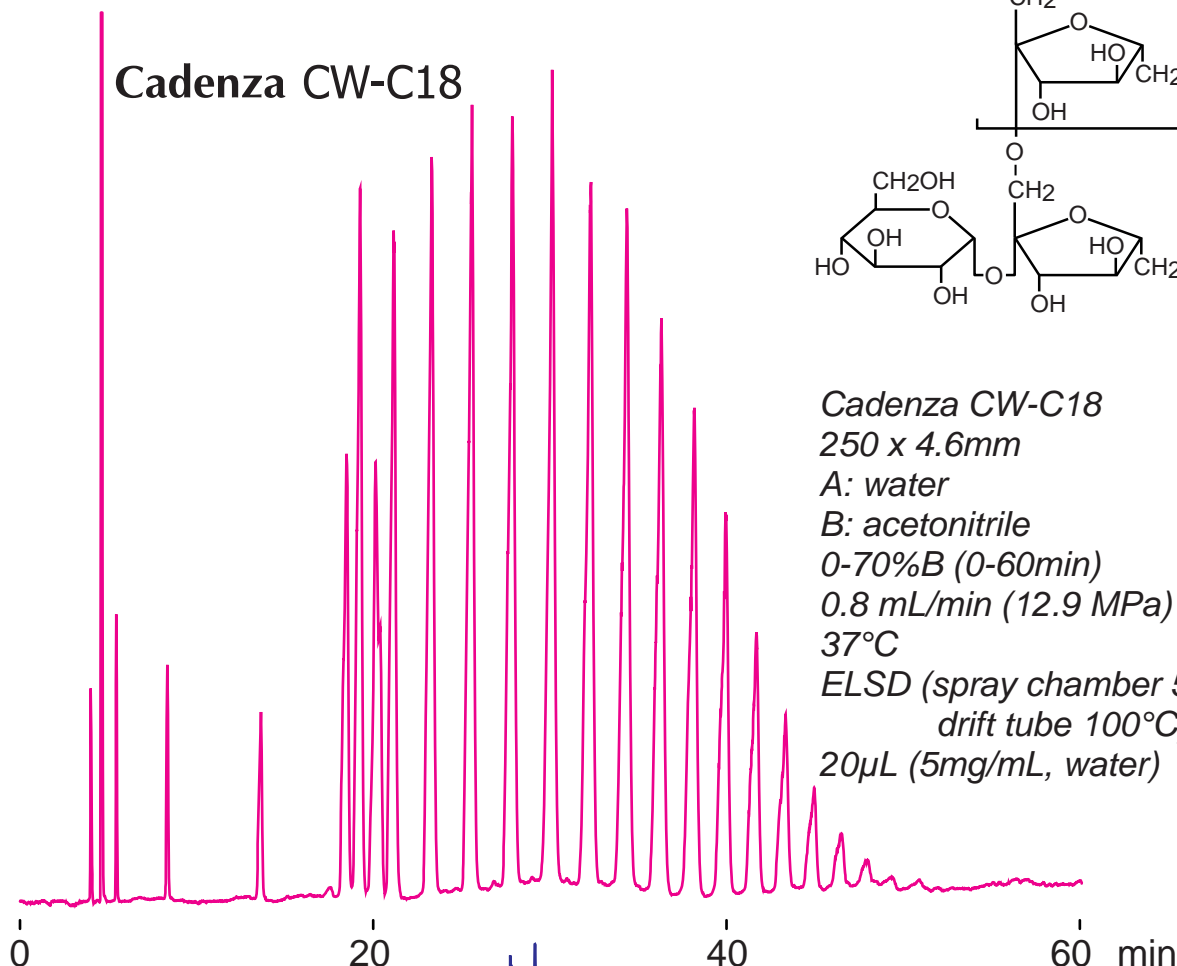
Application

Inulin

イヌリン

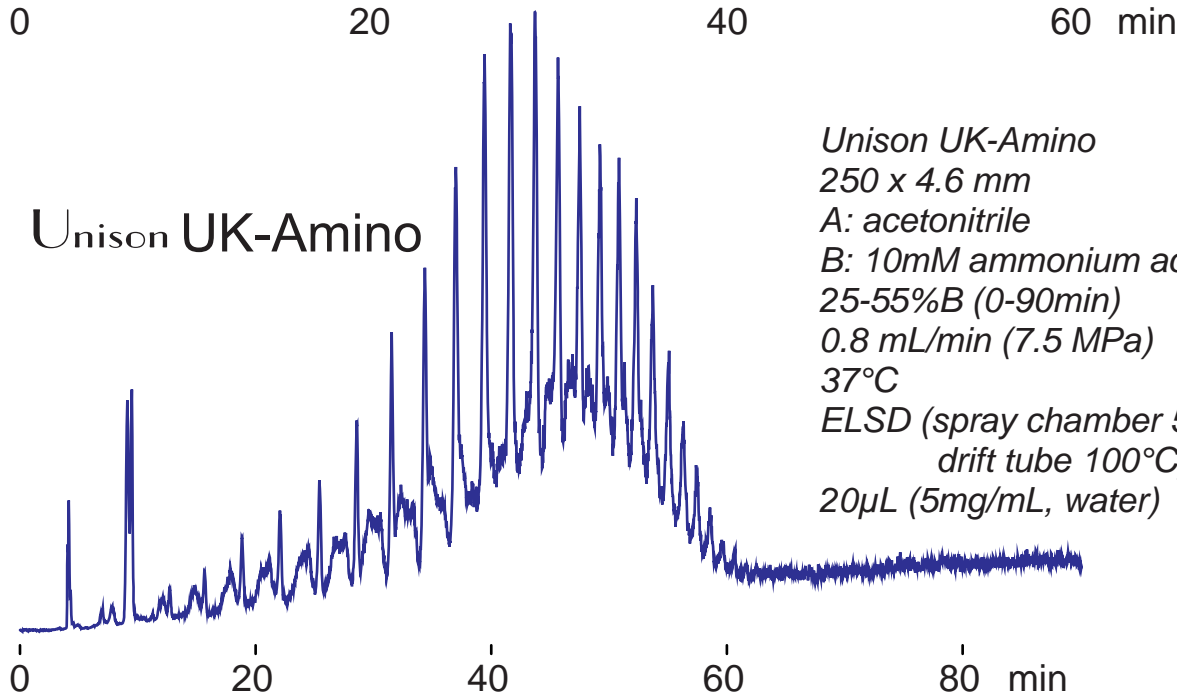


Cadenza CW-C18



Cadenza CW-C18
 250 x 4.6mm
 A: water
 B: acetonitrile
 0-70%B (0-60min)
 0.8 mL/min (12.9 MPa)
 37°C
 ELSD (spray chamber 50°C
 drift tube 100°C)
 20 μ L (5mg/mL, water)

Unison UK-Amino



Unison UK-Amino
 250 x 4.6 mm
 A: acetonitrile
 B: 10mM ammonium acetate
 25-55%B (0-90min)
 0.8 mL/min (7.5 MPa)
 37°C
 ELSD (spray chamber 50°C
 drift tube 100°C)
 20 μ L (5mg/mL, water)