

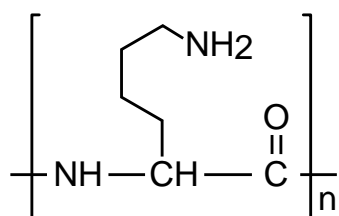
Intrada SEC

250 x 4.6 mm

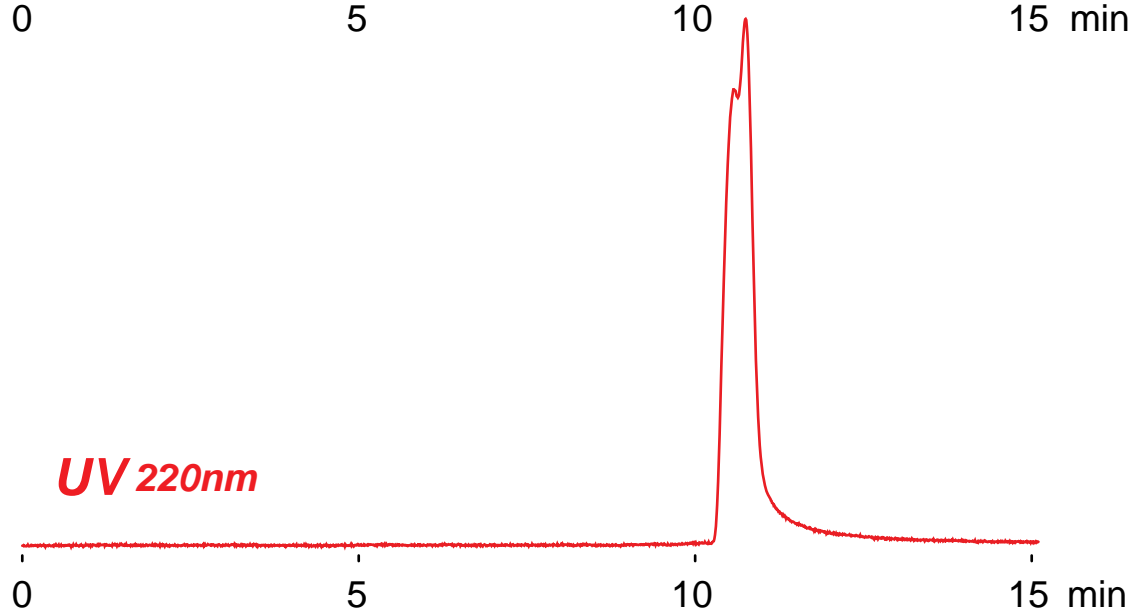
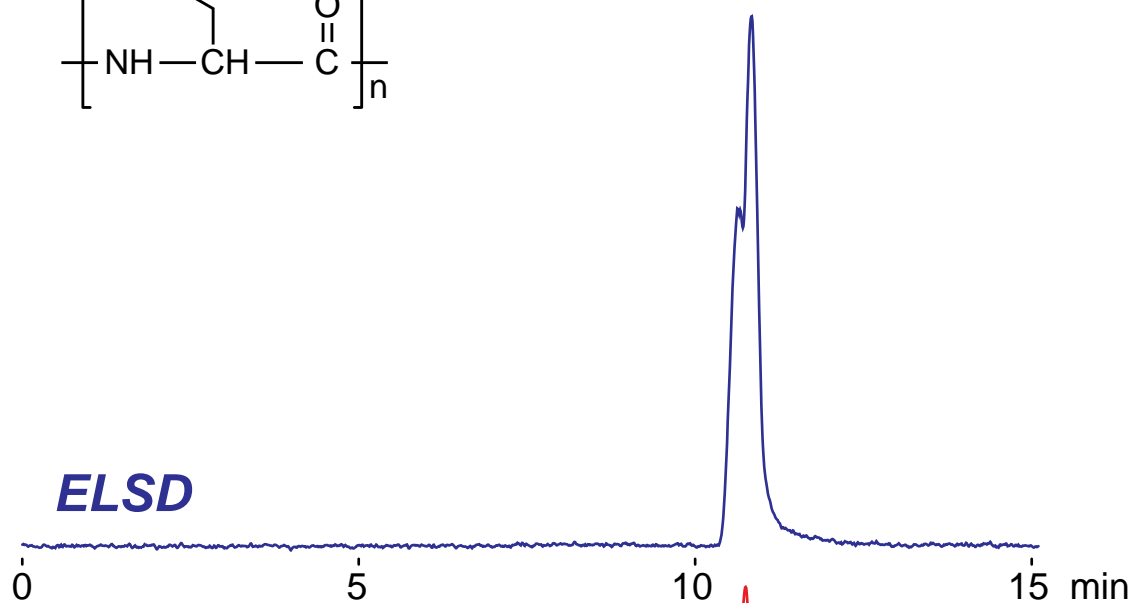
Application

SEC: Polylysine

ポリリジン(ポリ-L-リジン)のSEC分離



poly-L-lysine
MW : 1,000-5,000



Intrada SEC, 250 x 4.6 mm
100mM ammonium formate
0.3 mL/min (5MPa), 37°C
10 μL, (1mg/mL, eluent)