

**Intrada SEC**

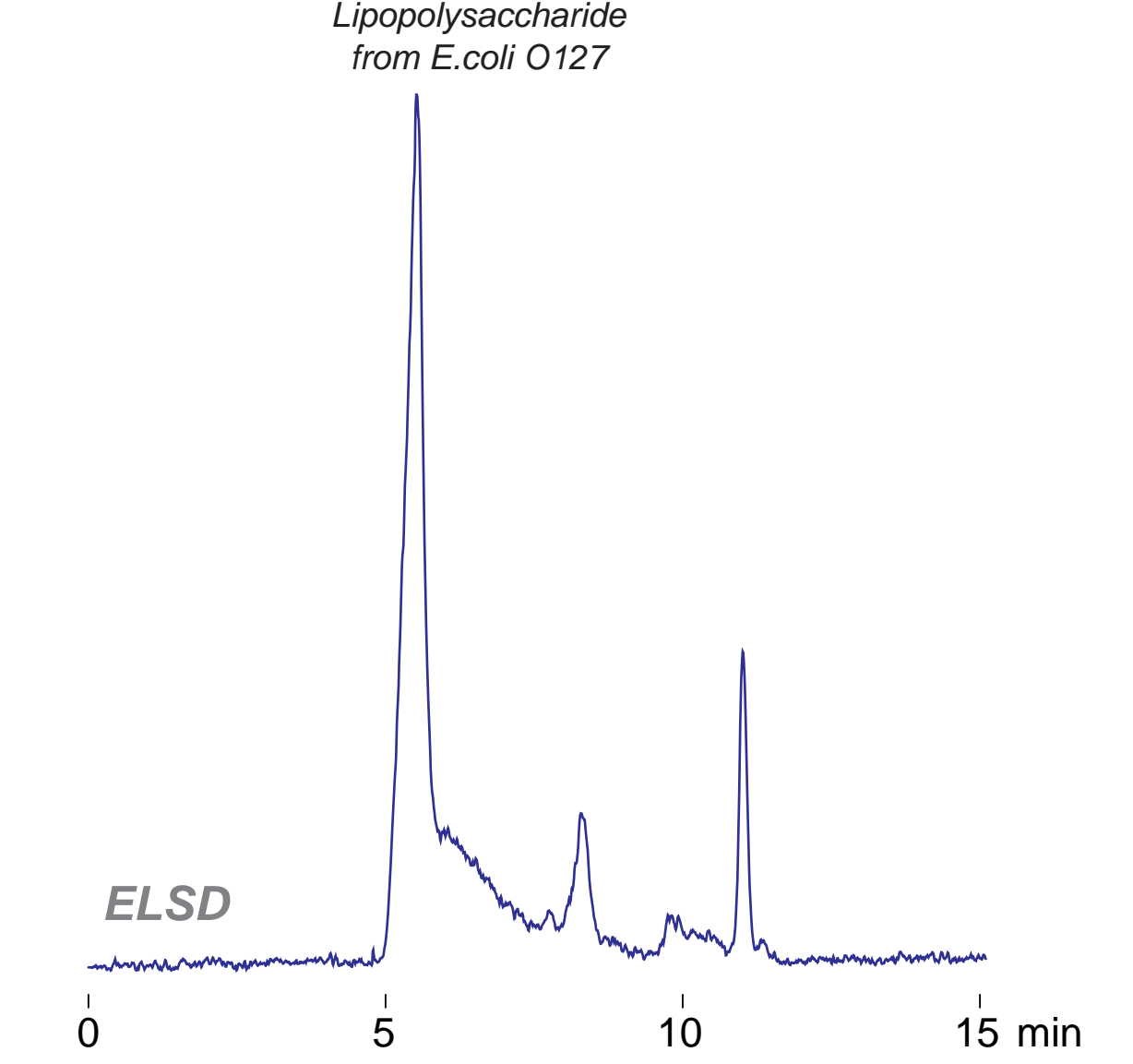
250 x 4.6 mm

Application

**SEC: Lipopolysaccharide (LPS)**

リポ多糖(大腸菌O127由来)のSEC分離

*Lipopolysaccharide  
from E.coli O127*



*Intrada SEC, 250 x 4.6 mm  
100mM ammonium formate  
0.3 mL/min (5MPa), 37°C  
20 µL (1mg/mL, eluent)*