

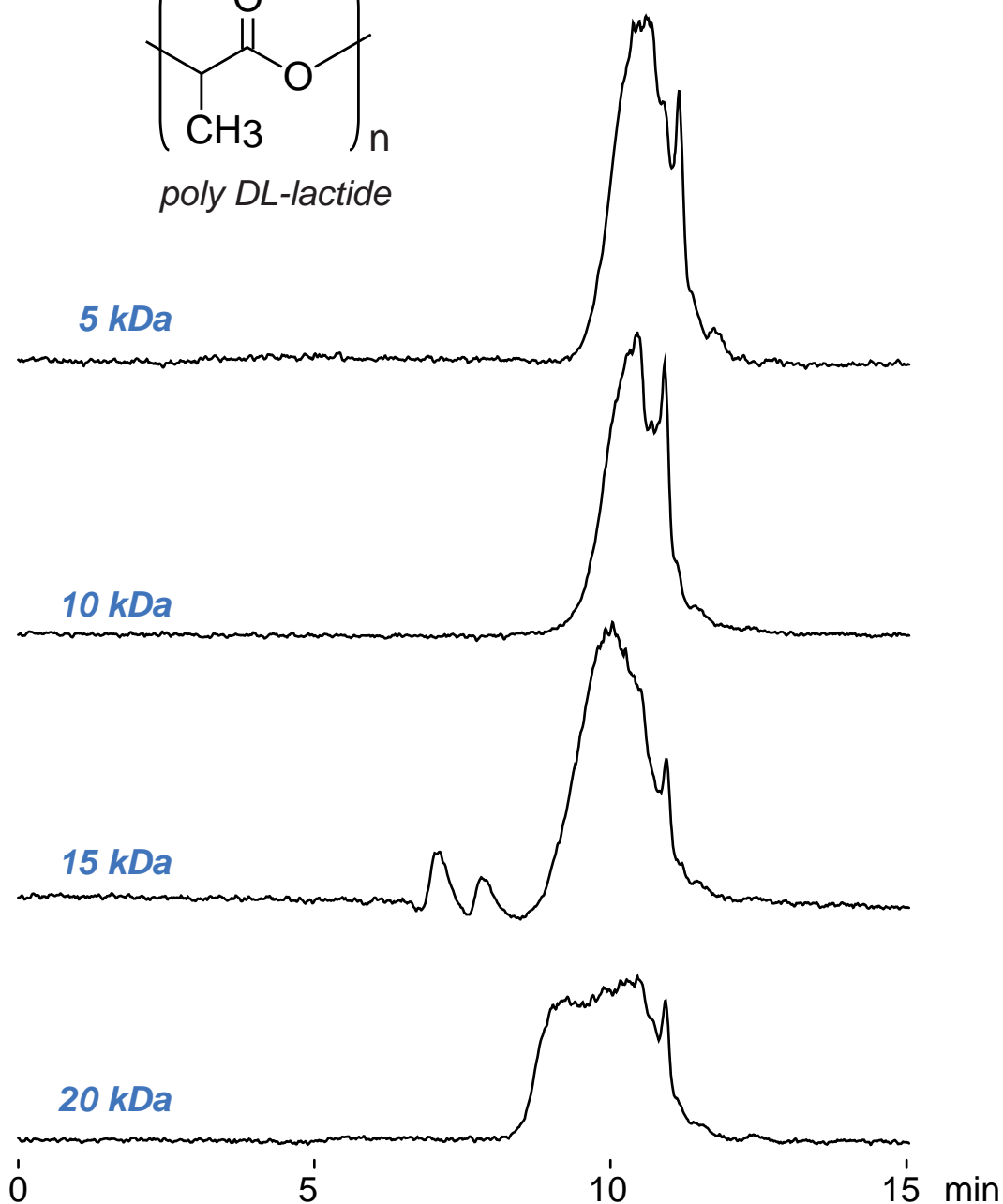
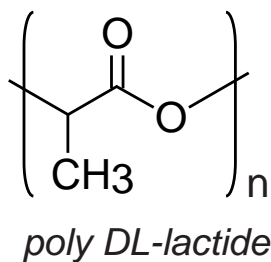
Intrada SEC

250 x 4.6 mm

Application

SEC: Polylactide (PLA)

ポリ乳酸のSEC分離



Intrada SEC, 250 x 4.6 mm
 acetonitrile / water = 65 / 35
 0.3 mL/min (3MPa), 60°C
 2 μL (5mg/mL, THF)

ELSD