

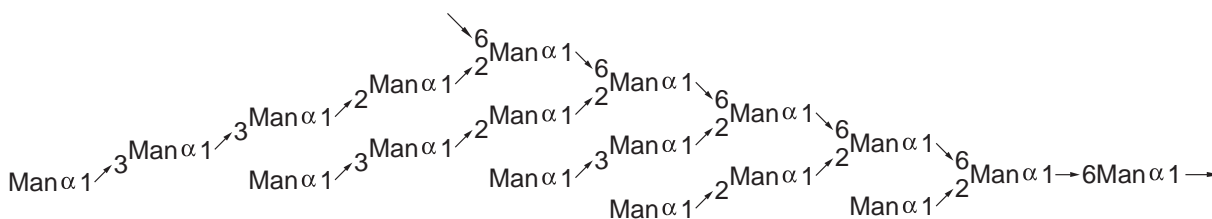
**Intrada SEC**

250 x 4.6 mm

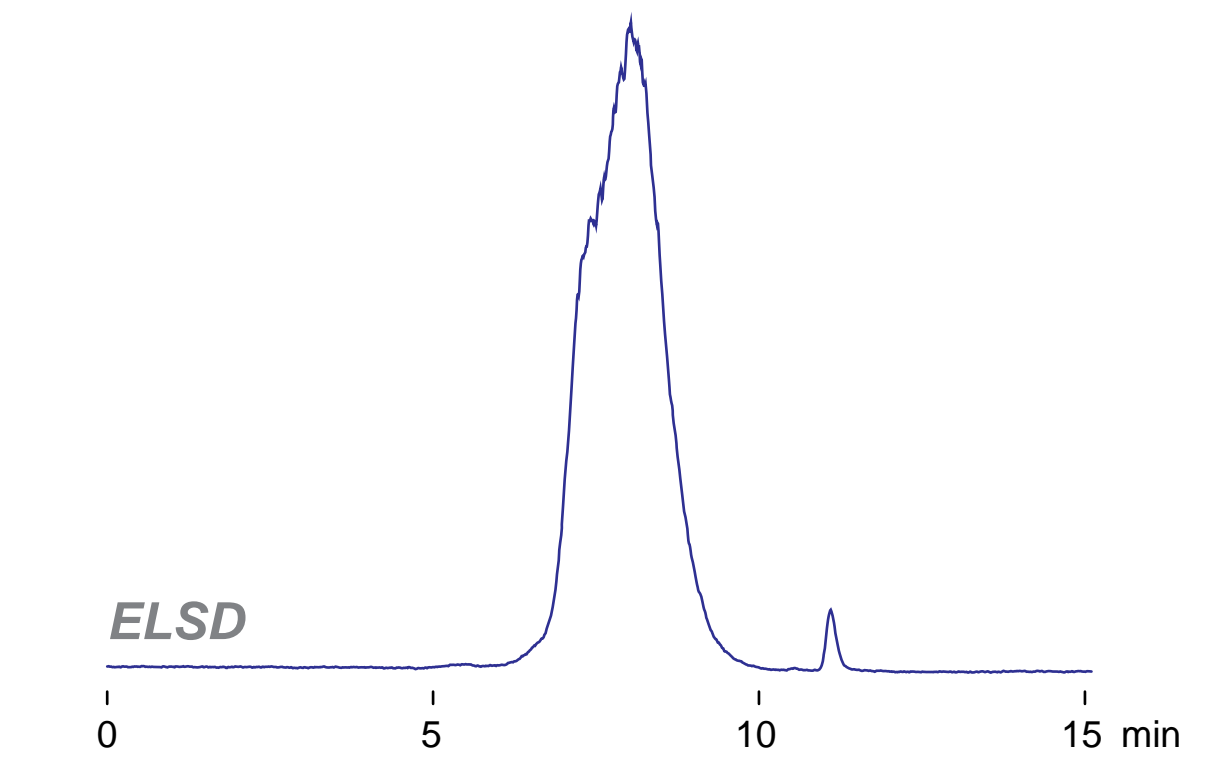
Application

**SEC: Mannan**

マンナンのSEC分離



*Mannan  
from Saccharomyces cerevisiae*



*Intrada SEC, 250 x 4.6 mm  
100mM ammonium formate  
0.3 mL/min (5MPa), 37°C  
10 μL (5mg/mL, water)*