

Intrada SEC

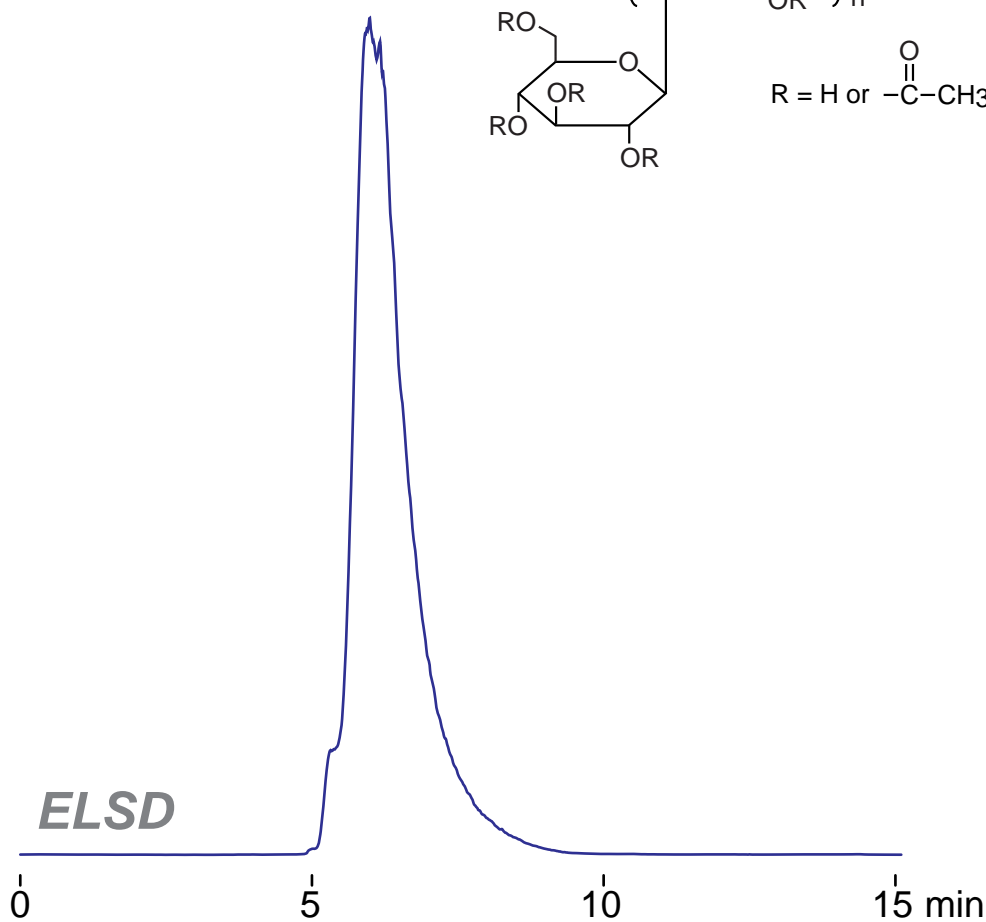
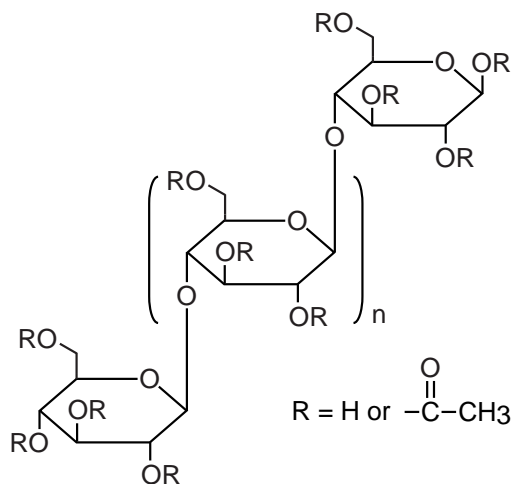
250 x 4.6 mm

Application

SEC: Cellulose Acetate (acetylcellulose)

酢酸セルロース(アセチルセルロース)のSEC分離

cellulose acetate
(40 wt.% acetyl)



Intrada SEC, 250 x 4.6 mm
acetonitrile / water = 60 / 40
0.3 mL/min (5MPa), 37°C
5 μ L (5mg/mL, acetonitrile)