

Intrada SEC

250 x 4.6 mm

Application

SEC: Monoclonal antibody (mAb)

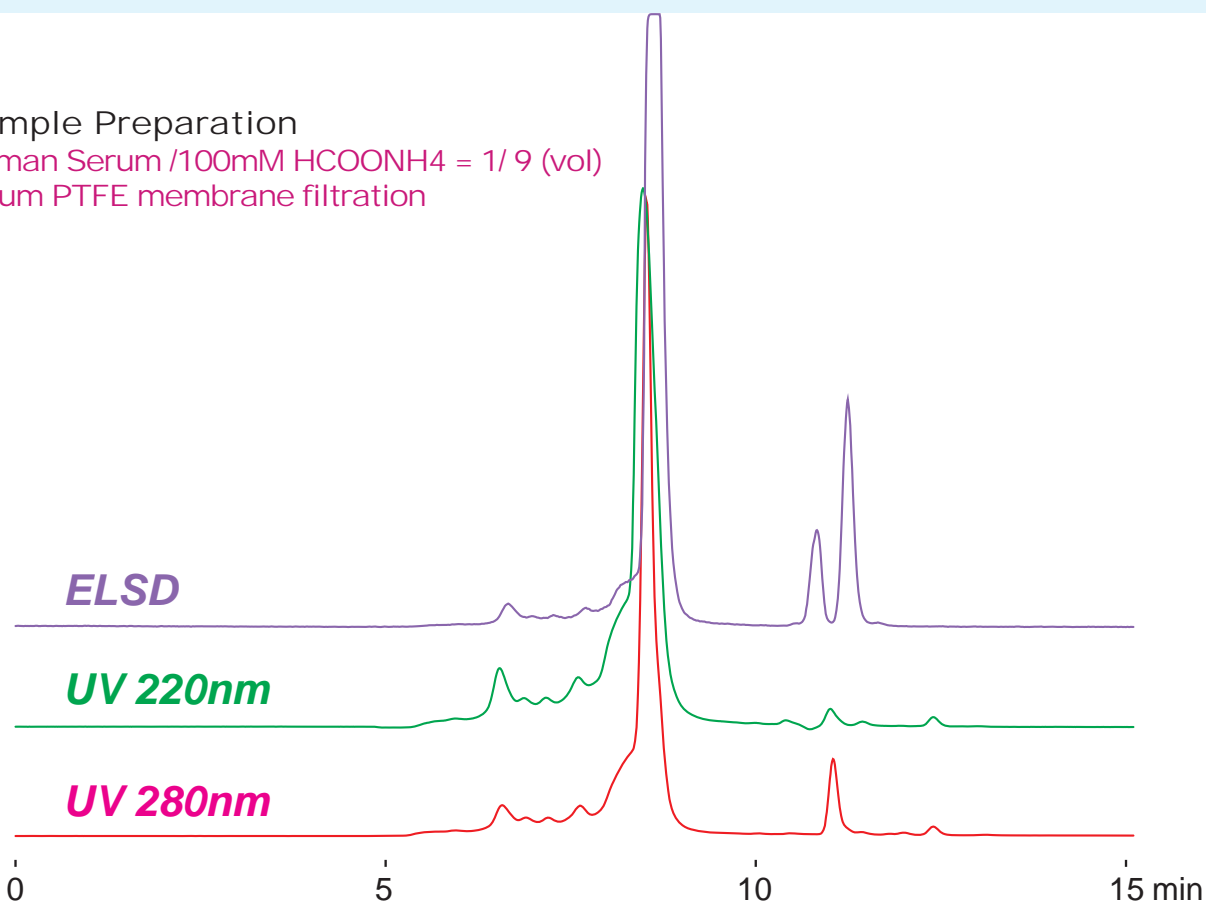
モノクローナル抗体のSEC分離

SEC: Human Serum **Intrada SEC**

Sample Preparation

Human Serum /100mM HCOONH4 = 1/ 9 (vol)

0.2um PTFE membrane filtration



872

*Intrada SEC, 250 x 4.6 mm
100mM ammonium formate
0.3 mL/min (5MPa), 37°C
10 µL*