

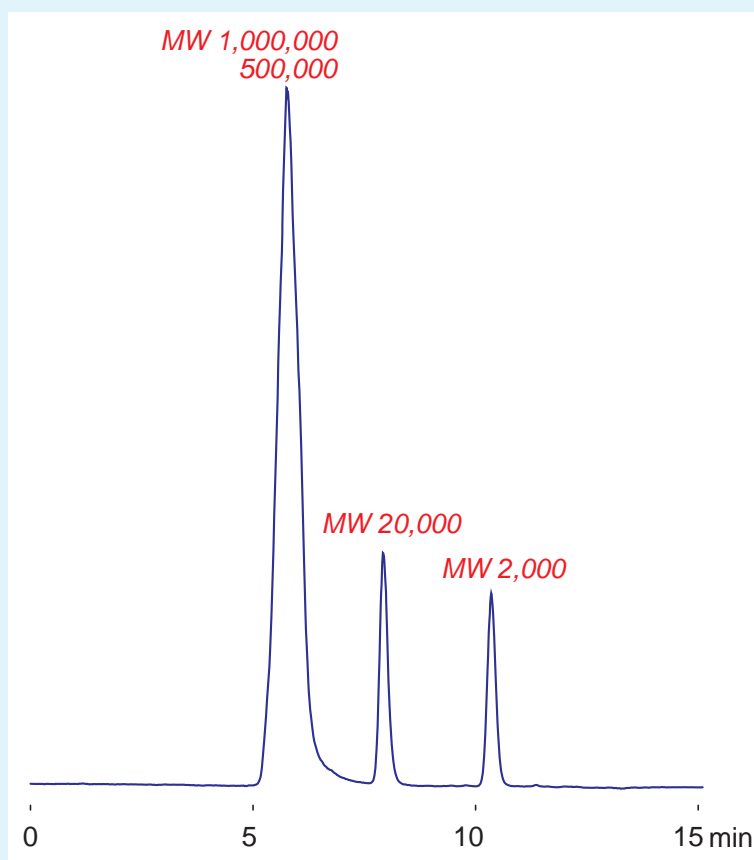
**Intrada SEC**

250 x 4.6 mm

Application

**SEC: Polyethylene Glycol**

ポリエチレングリコールのSEC分離

**SEC: PEG****Intrada SEC****Polyethylene Glycol** $H(OCH_2CH_2)_nOH$ 

*Intrada SEC, 250x4.6mm  
water / methanol = 70 / 30  
0.3mL/min (7MPa), 37°C  
ELSD (spray chamber 50°C, drift tube 100°C)  
8  $\mu$ L (0.25-0.75mg/mL)*