

Intrada SEC

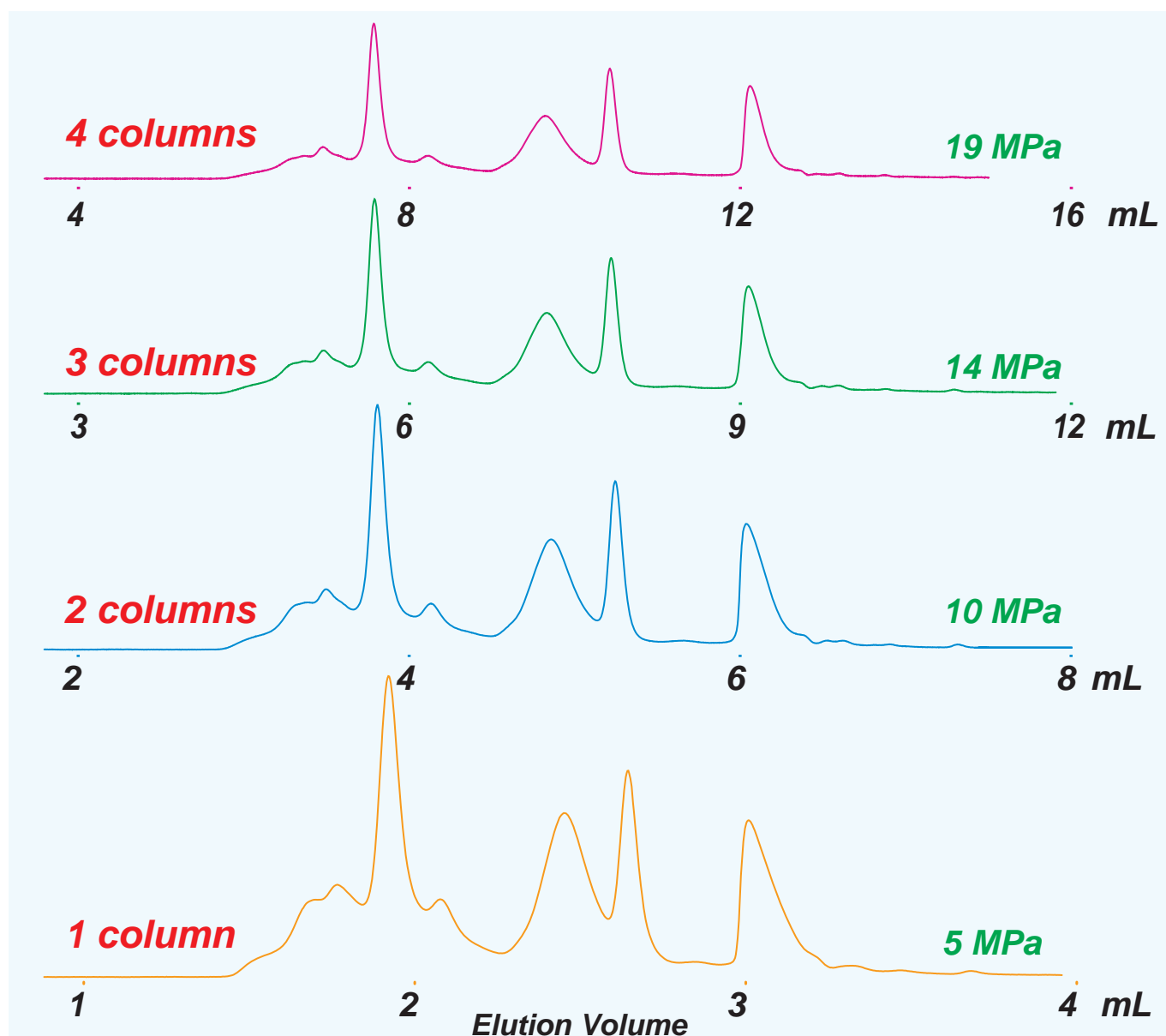
250 x 4.6 mm

Application

SEC separation for proteins (column connection)

SECモードによるタンパク質分離(カラム連結)

1. thyroglobulin (660kDa) 0.65mg/mL
2. IgG (150kDa) 0.08mg/mL
3. ovalbumin (44kDa) 0.16mg/mL
4. insullin (5.8kDa) 0.16mg/mL



Intrada SEC, (250 x 4.6 mm) x n, n = 1-4
 100mM ammonium formate
 0.3 mL/min, 37°C, 280nm, 40µL