

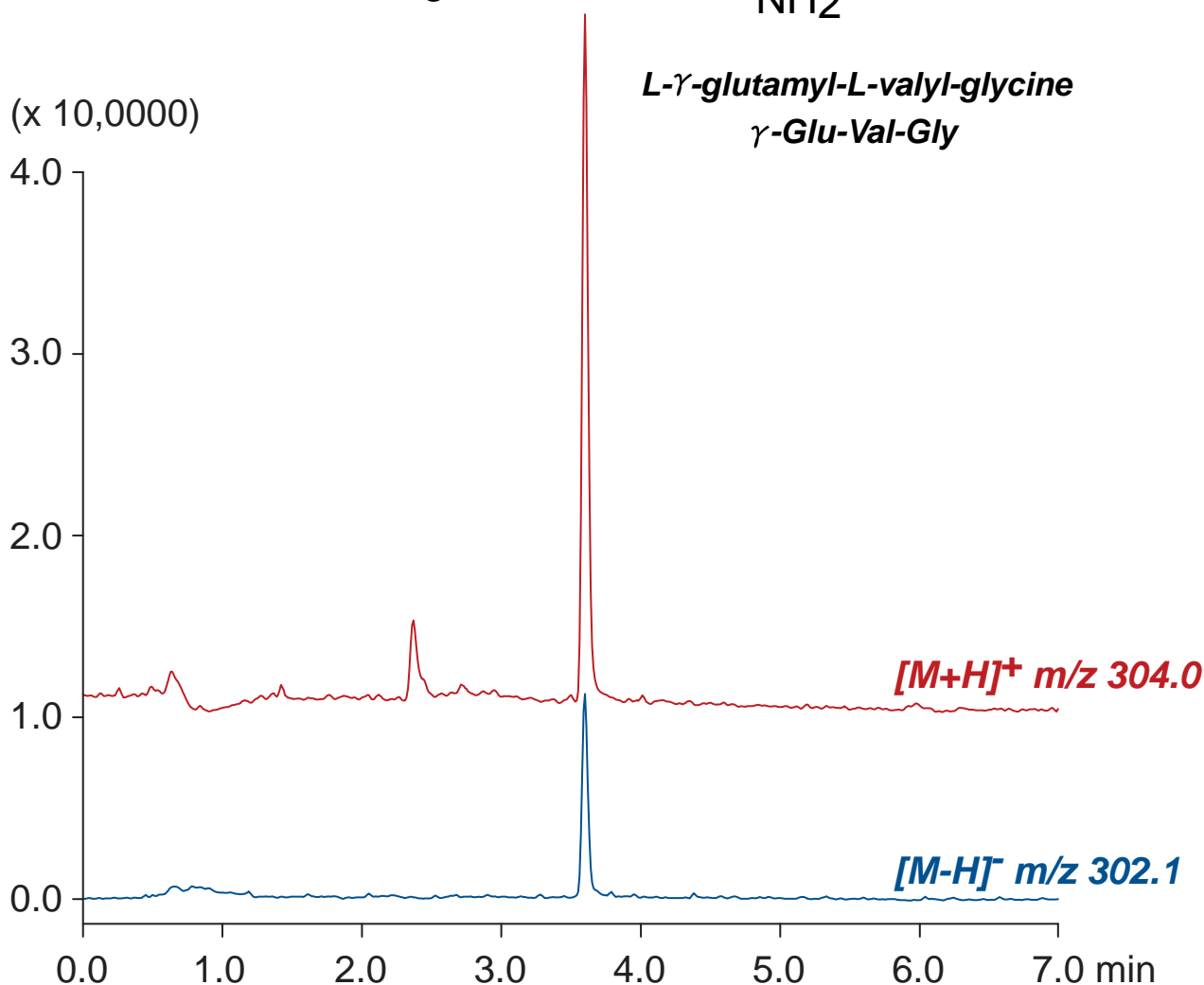
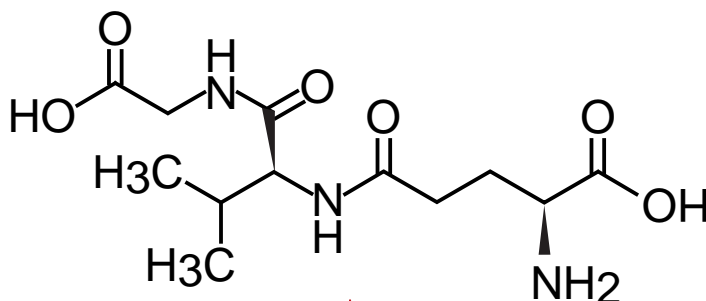
Intrada Amino Acid

50 x 3 mm

Application

LC-MS: Glutamyl-Valyl-Glycine

グルタミンルバリルグリシン(コク味ペプチド)のLC-MS分析



Intrada Amino Acid, 50 x 3 mm

A: acetonitrile / formic acid = 100 / 0.5

B: acetonitrile / 100mM ammonium formate = 20 / 80

15%B (0-1.5 min), 15-100%B (1.5-5.5 min), 100%B (5.5-7min)

0.4 mL/min (2 MPa), 37°C, 20 μL (500ng/mL, water/HCOOH = 100 /1)

Single Quad. MS (ESI)