

**Cadenza CD-C18**

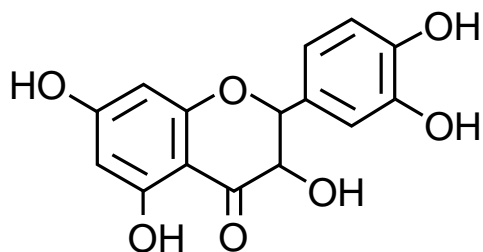
**Unison UK-C8**

50 x 3 mm

Application

**LC-MS: Taxifolin**

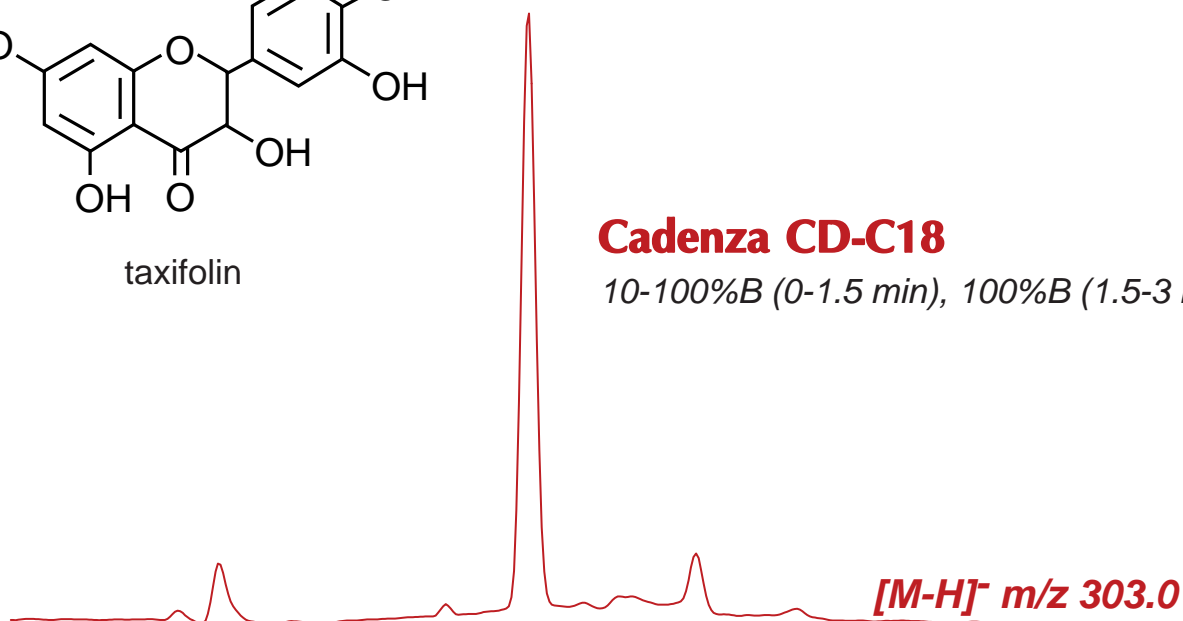
タキシフォリン



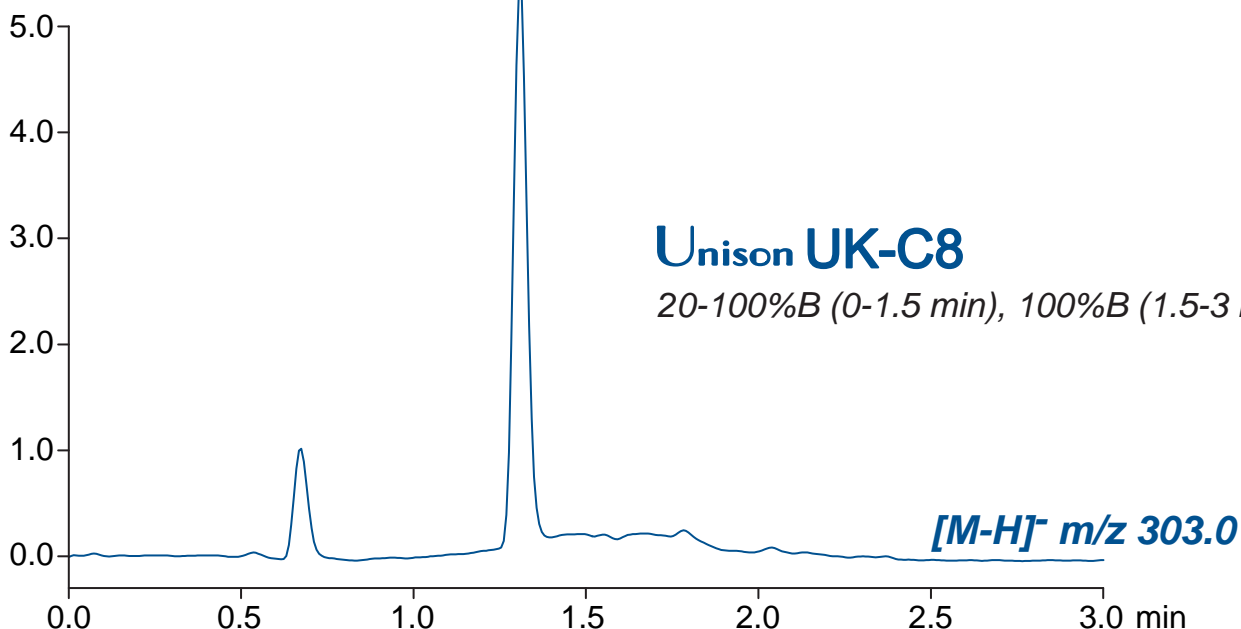
taxifolin

**Cadenza CD-C18**

10-100%B (0-1.5 min), 100%B (1.5-3 min)



(x100,000)



**Unison UK-C8**

20-100%B (0-1.5 min), 100%B (1.5-3 min)

50 x 3 mm

A: water / acetic acid = 100 / 1

B: methanol / acetic acid = 100 / 1

0.4 mL/min (3-4 MPa), 50°C

10 μL (500ng/mL, MeOH / water / AcOH = 50 / 50 / 0.1), Single Quad. MS (ESI)