

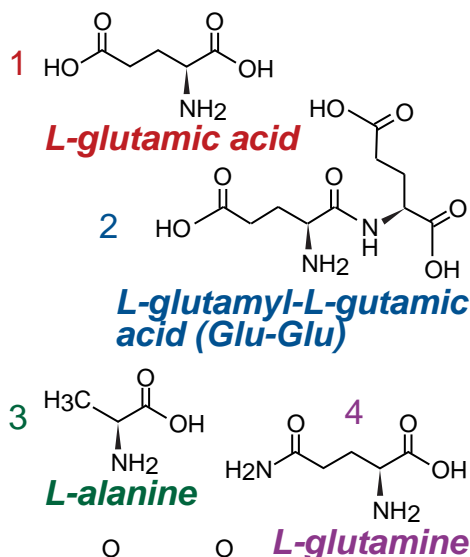
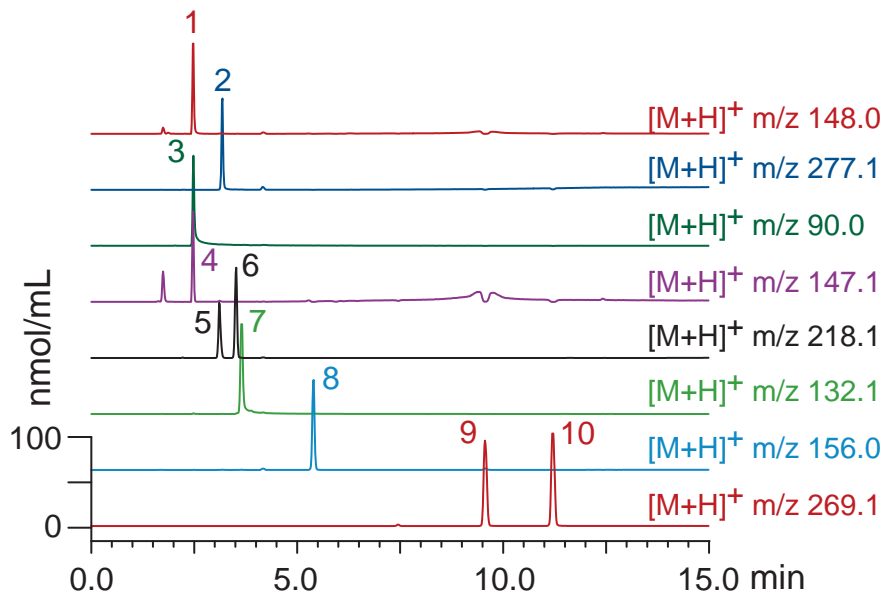
Scherzo SS-C18
Intrada Amino Acid

150 x 3 mm

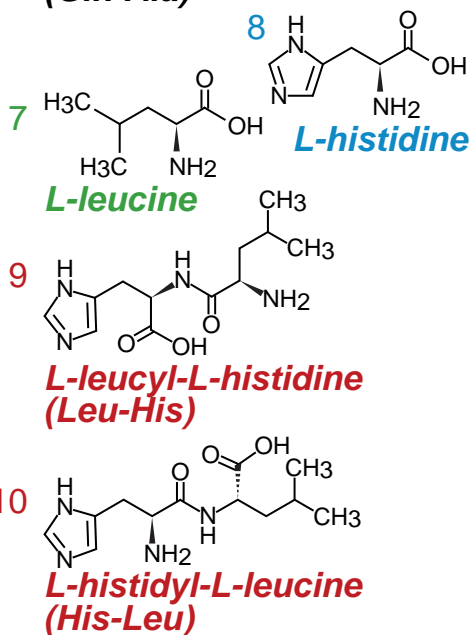
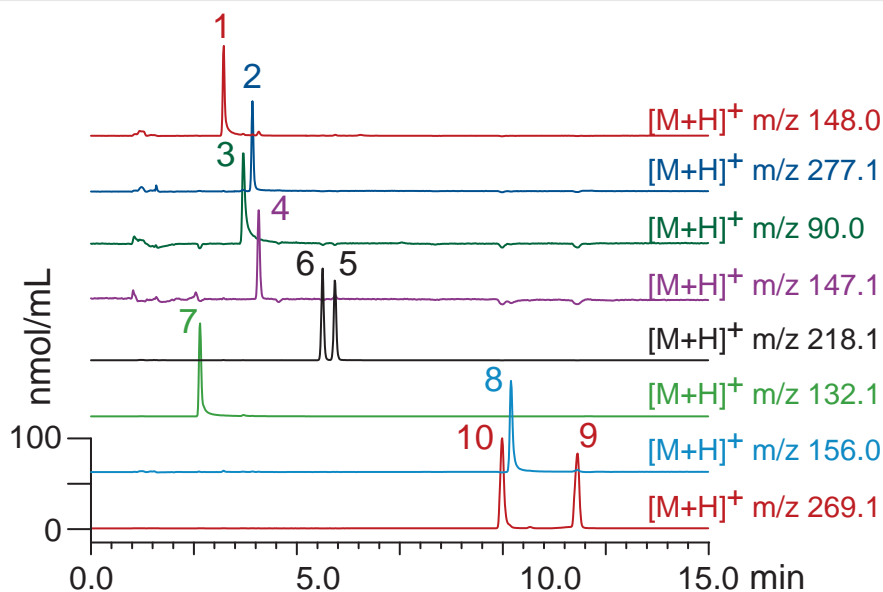
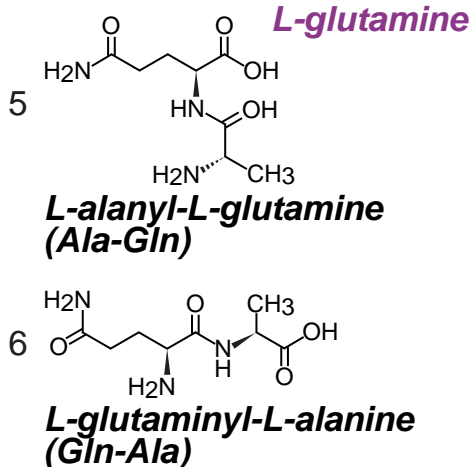
Application

LC-MS: retro-dipeptide isomers

レトロ-ジペプチド異性体のLC-MS分析



Scherzo SS-C18, 150 x 3 mm
A: water / acetonitrile / formic acid = 80 / 20 / 0.3
B: 100mM ammonium formate/ acetonitrile = 70 / 30
20-100 %B (0-10min), 100 %B (10-15min)
0.4 mL/min (9 MPa), 37°C, 10 μL (100nmol/mL, 1%HCOOH)
Single Quad. MS (ESI)



Intrada Amino Acid, 150 x 3 mm
A: acetonitrile / formic acid = 100 / 0.3
B: acetonitrile / 100mM ammonium formate = 60 / 40
70-100 %B (0-6min), 100 %B (6-15min)
0.6 mL/min (9 MPa), 37°C, 10 μL (100nmol/mL, 1%HCOOH)
Single Quad. MS (ESI)