

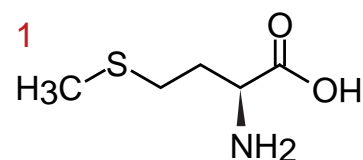
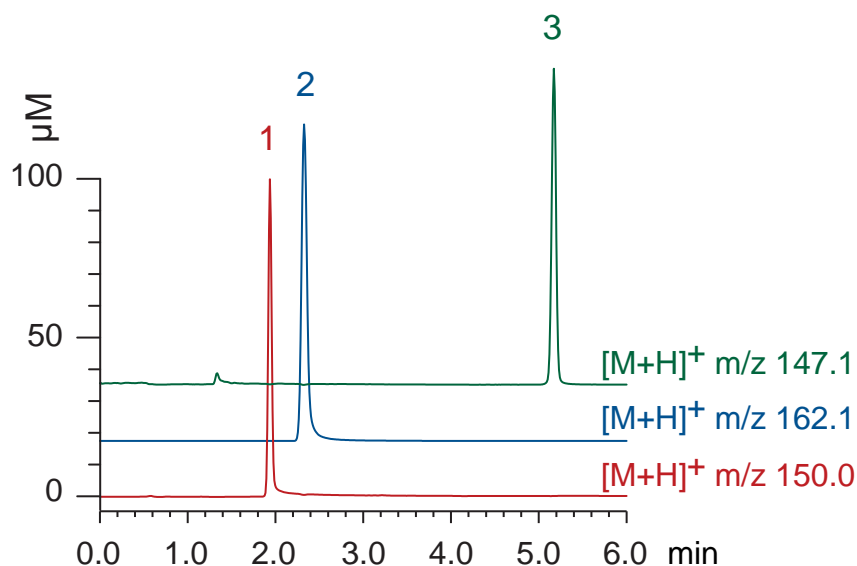
**Intrada Amino Acid**  
**Scherzo SS-C18**

50 x 3 mm

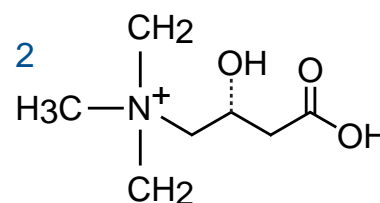
Application

**LC-MS: carnitine related compounds**

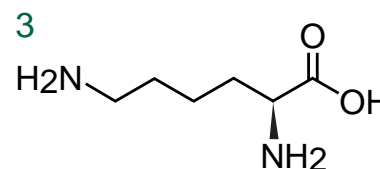
カルニチン関連化合物のLC-MS分析



**L-methionine**

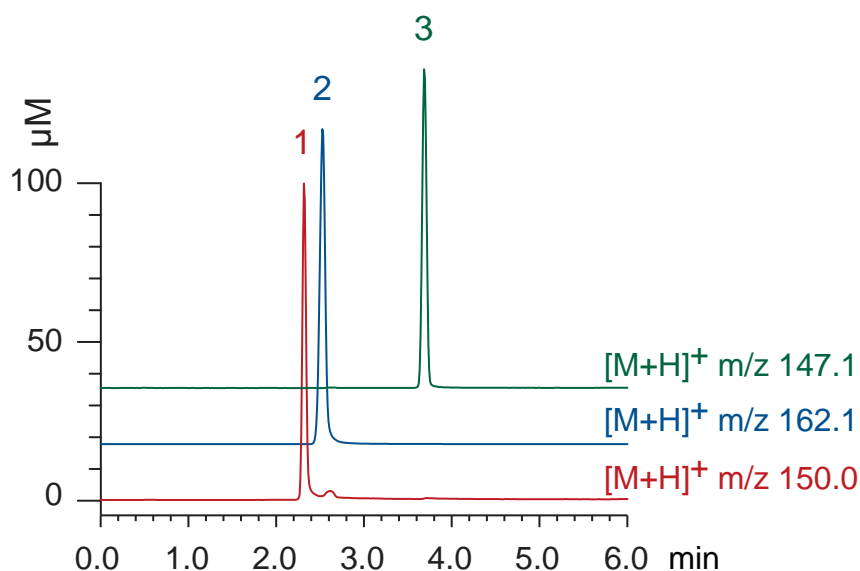


**L-carnitine**



**L-lysine**

Intrada Amino Acid, 50 x 3 mm  
A: acetonitrile / formic acid = 100 / 0.1  
B: 100mM ammonium formate  
15-100 %B (0-6min), 15 %B (6-10min)  
0.6 mL/min (3 MPa), 37°C, 5  $\mu\text{L}$  (100nmol/mL, 1% HCOOH)  
Single Quad. MS (ESI, positive)



Scherzo SS-C18, 50 x 3 mm  
A: water / formic acid = 100 / 0.1  
B: acetonitrile / 100mM ammonium formate = 80 / 20  
5-50 %B (0-5min), 100 %B (5-6min), 5 %B (6-10min)  
0.5 mL/min (5 MPa), 37°C, 5  $\mu\text{L}$  (100nmol/mL, 1% HCOOH)  
Single Quad. MS (ESI, positive)