

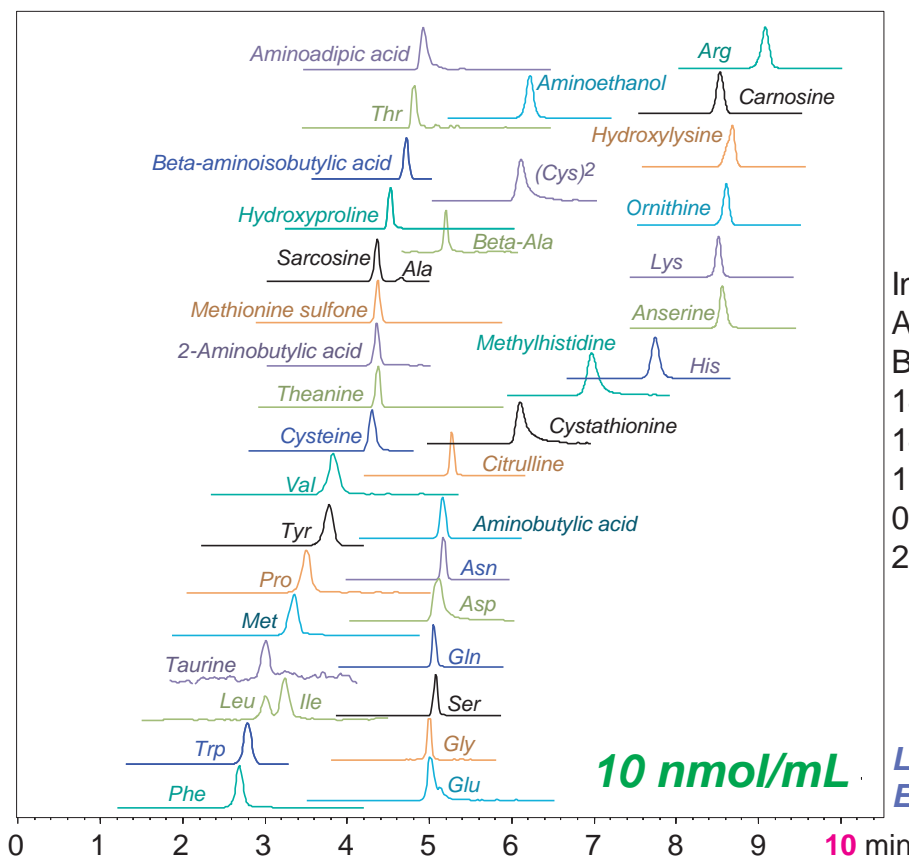
**Intrada Amino Acid**

50 x 3 mm

Application

**LC-MS: 39 Amino acids (standard)**

39種アミノ酸(標準試料)のLC-MS/MS分析



Intrada Amino Acid, 50 x 3 mm  
 A: acetonitrile /HCOOH =100 /0.1  
 B: 100mM ammonium formate  
 14%B (0-3min)  
 14-100%B (3-10min)  
 100%B (10-15min)  
 0.6 mL/min, 40°C  
 2µL (10nmol/mL, 0.1N HCl)

**LCMS-8050 (Shimadzu Corp.)**  
**ESI, Positive/Negative, MRM**

	MRM Transition	Linearity			MRM Transition	Linearity	
		Range (nmol/mL)	Coefficient (r2)			Range (nmol/mL)	Coefficient (r2)
Trp	205.10>188.10	0.01-100	0.995	Theanine	174.50>84.10	1-500	0.988
Phe	166.10>120.10	0.01-100	0.997	Aminoadipic acid	161.90>98.20	0.1-50	0.979
Tyr	182.10>136.00	0.05-100	0.99	Taurine	126.20>44.05	10-500	0.998
Met	150.10>56.10	0.05-200	0.996	Ornithine	133.10>70.10	0.05-100	0.997
Lue, Ile	132.10>86.15	0.01-100	0.995	Cysteine	122.00>76.05	5-500	0.996
Val	118.10>72.05	0.05-100	0.999	Hydroxyproline	132.10>86.05	0.1-500	0.991
Glu	148.10>84.10	0.05-10	0.996	Sarcosine	89.90>43.85	0.05-100	0.999
Pro	116.10>70.10	0.01-50	0.993	β-Ala	89.70>72.10	0.5-500	0.999
Asp	134.20>74.10	0.5-500	0.995	Citrulline	176.10>70.05	0.05-100	0.993
Thr	120.10>74.00	0.1-50	0.992	2-Aminobutyric acid	104.10>58.05	0.5-500	0.996
Ala	90.10>44.10	0.5-500	0.998	Cystathionine	223.00>88.05	0.1-10	0.995
Ser	106.10>60.20	0.5-500	0.998	Aminoethanol	62.00>44.10	0.1-500	0.999
Gln	147.10>84.10	0.05-1	0.995	Anserine	240.70>109.10	0.1-100	0.997
Gly	76.20>29.90	5-200	0.997	Carnosine	227.10>110.05	0.05-100	0.995
Asn	133.10>74.05	0.05-20	0.993	Hydroxylysine	162.90>82.15	0.1-500	0.996
(Cys)2	241.00>151.95	0.05-20	0.99	Methylhistidine	169.90>124.15	0.01-10	0.999
His	156.10>110.10	0.05-200	0.998	3-Aminoisobutyric acid	103.80>86.10	0.05-500	0.991
Lys	147.10>84.10	0.05-5	0.99	4-Aminobutyric acid (GABA)	104.10>87.05	0.05-500	0.995
Arg	175.10>70.10	0.01-100	0.996	Methionine sulfone	180.00>79.20	0.5-100	0.973

Ref.) ASMS 2015 (St. Louis)

Courtesy of Shimadzu Corporation, JAPAN