

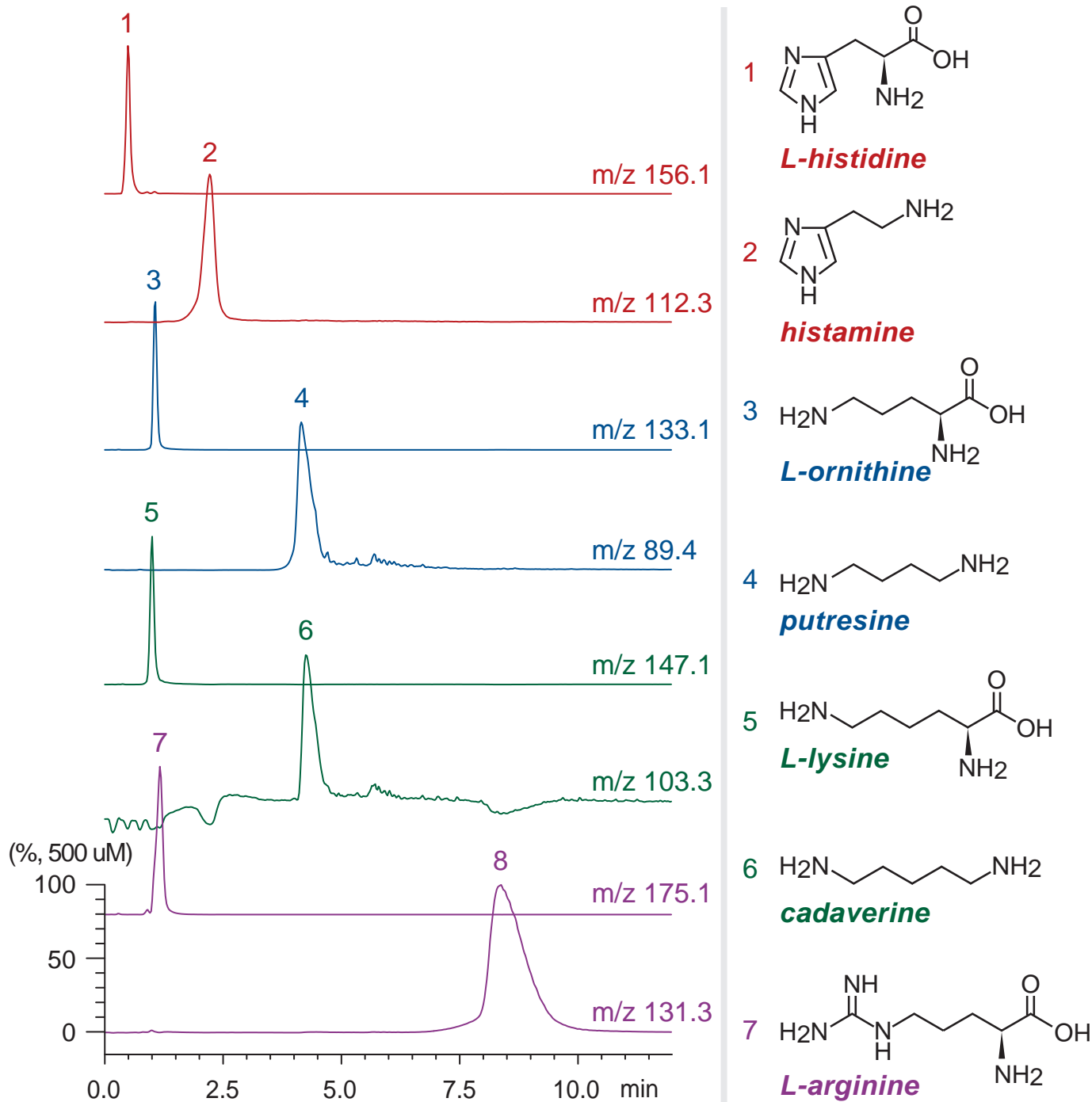
**Intrada Amino Acid**

10 x 3 mm

Application

**LC-MS: biogenic amines and precursor amino acids (3)**

腐敗アミンと前駆アミノ酸のLC-MS分析 (3)



Intrada Amino Acid, 10 x 3 mm

A: methanol / formic acid = 100 / 0.1

B: 180 mM ammonium formate

40-100 %B (0-2min), 100 %B (2-12min)

0.4 mL/min (3 MPa), 37°C, 15uL (500nmol/mL, 0.1N HCl)

Single Quad. MS (ESI, positive)