

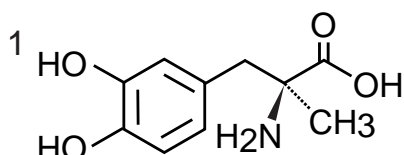
Intrada Amino Acid

100 x 3 mm

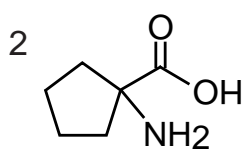
Application

LC-MS: α - Disubstituted amino acids (2)

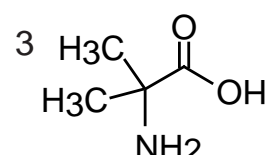
α -二置換アミノ酸のLC-MS分析 (2)



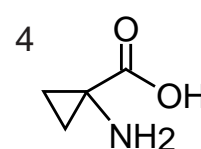
L-methyldopa



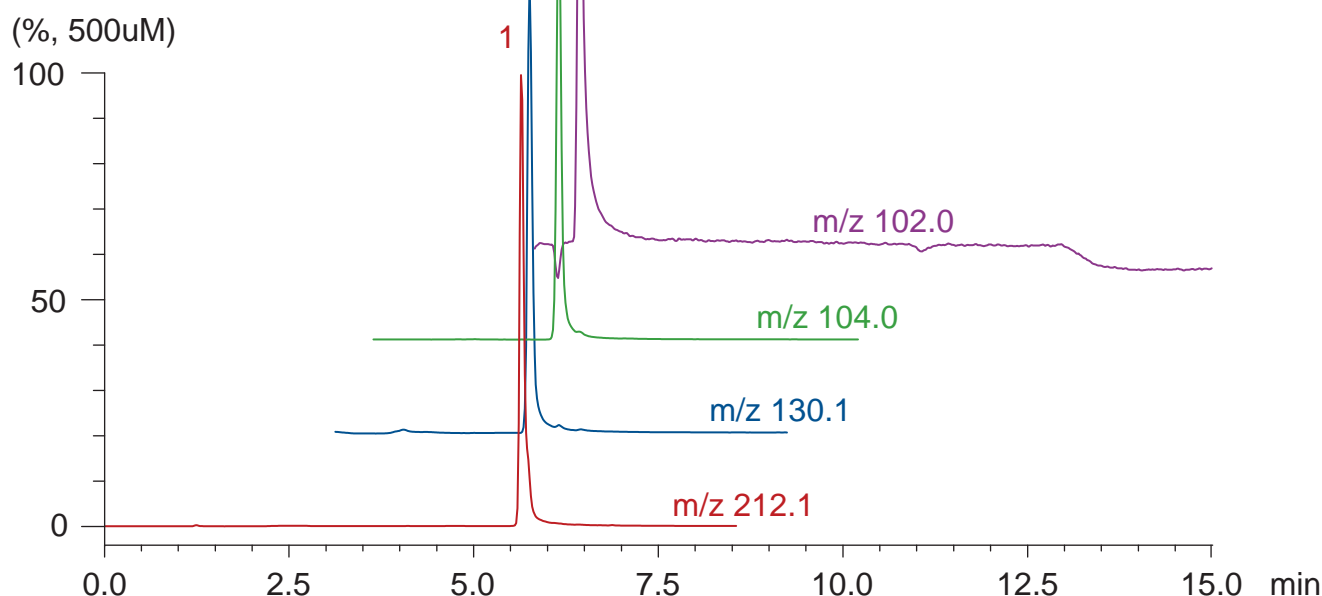
1-aminocyclopentane
carboxylic acid
(cycloleucine)



2-aminoisobutyric acid
(2-methylalanine)



1-aminocyclopropane
carboxylic acid



Intrada Amino Acid, 100 x 3 mm

A: acetonitrile / formic acid = 100 / 0.1

B: acetonitrile / 100 mM ammonium formate = 20 / 80

10-70 %B (0-12 min), 100 %B (12-15 min)

0.6 mL/min(4 MPa), 37°C, 5 μ L (500 nmol/mL, 0.1N HCl)

Single Quad. MS: ESI (SIM, positive)