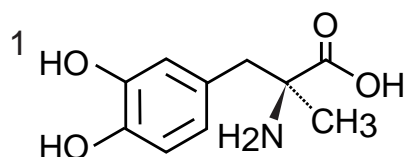


Intrada Amino Acid

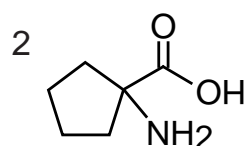
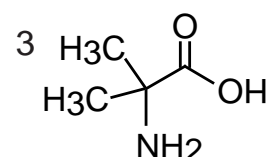
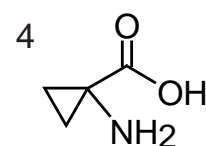
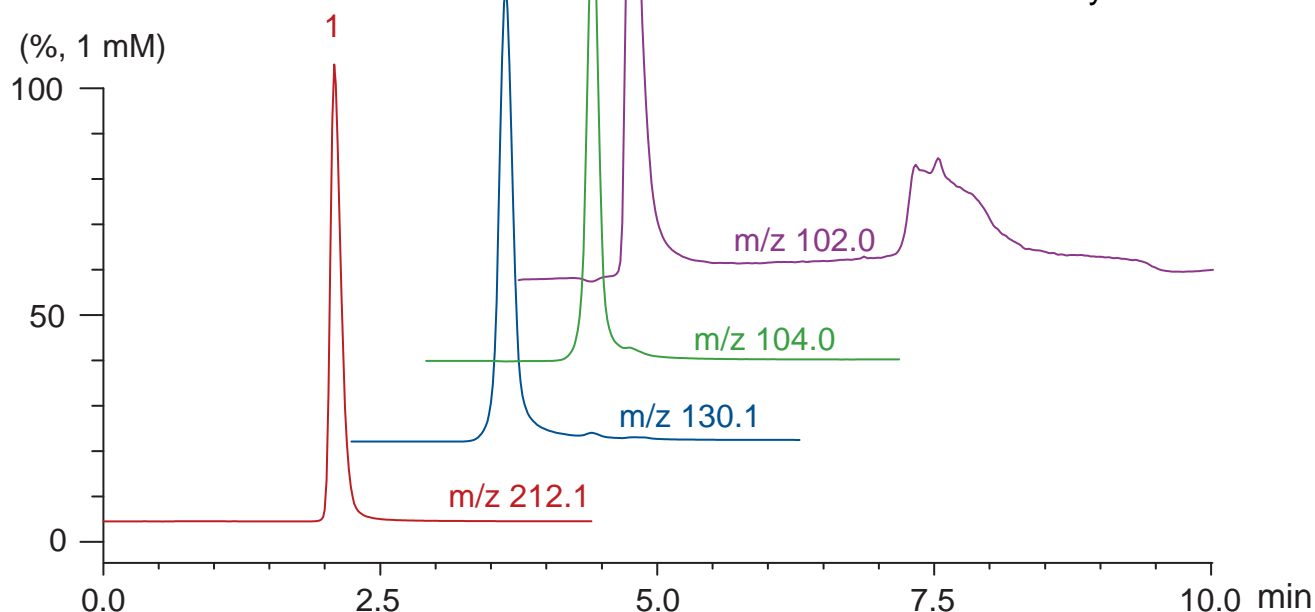
50 x 3 mm

Application

LC-MS: α - Disubstituted amino acids (recommended)

 α - 二置換アミノ酸のLC-MS分析(推奨メソッド)


L-methyldopa


 1-aminocyclopentane
carboxylic acid
(cycloleucine)

 2-aminoisobutyric acid
(2-methylalanine)

 1-aminocyclopropane
carboxylic acid


Intrada Amino Acid, 50 x 3 mm

A: acetonitrile /tetrahydrofuran /25mM ammonium formate /formic acid = 9 /75 /16 /0.3

B: acetonitrile /100mM ammonium formate = 20 / 80

0 %B (0-2.5 min), 0-17 %B (2.5-6.5 min), 100 %B (6.5-10 min)

0.6 mL/min(6 MPa), 35°C, 5uL (1000nmol/mL, 0.1N HCl)

Single Quad. MS: ESI (SIM, positive)