

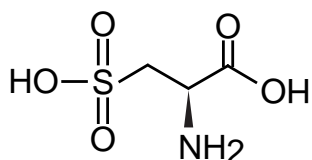
**Intrada** Amino Acid

50 x 3 mm

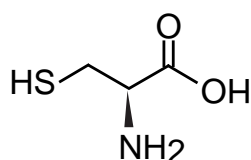
Application

**LC-MS: Cysteic acid related compounds**

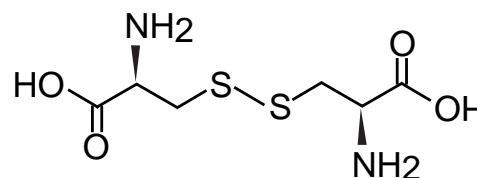
システイン酸関連化合物



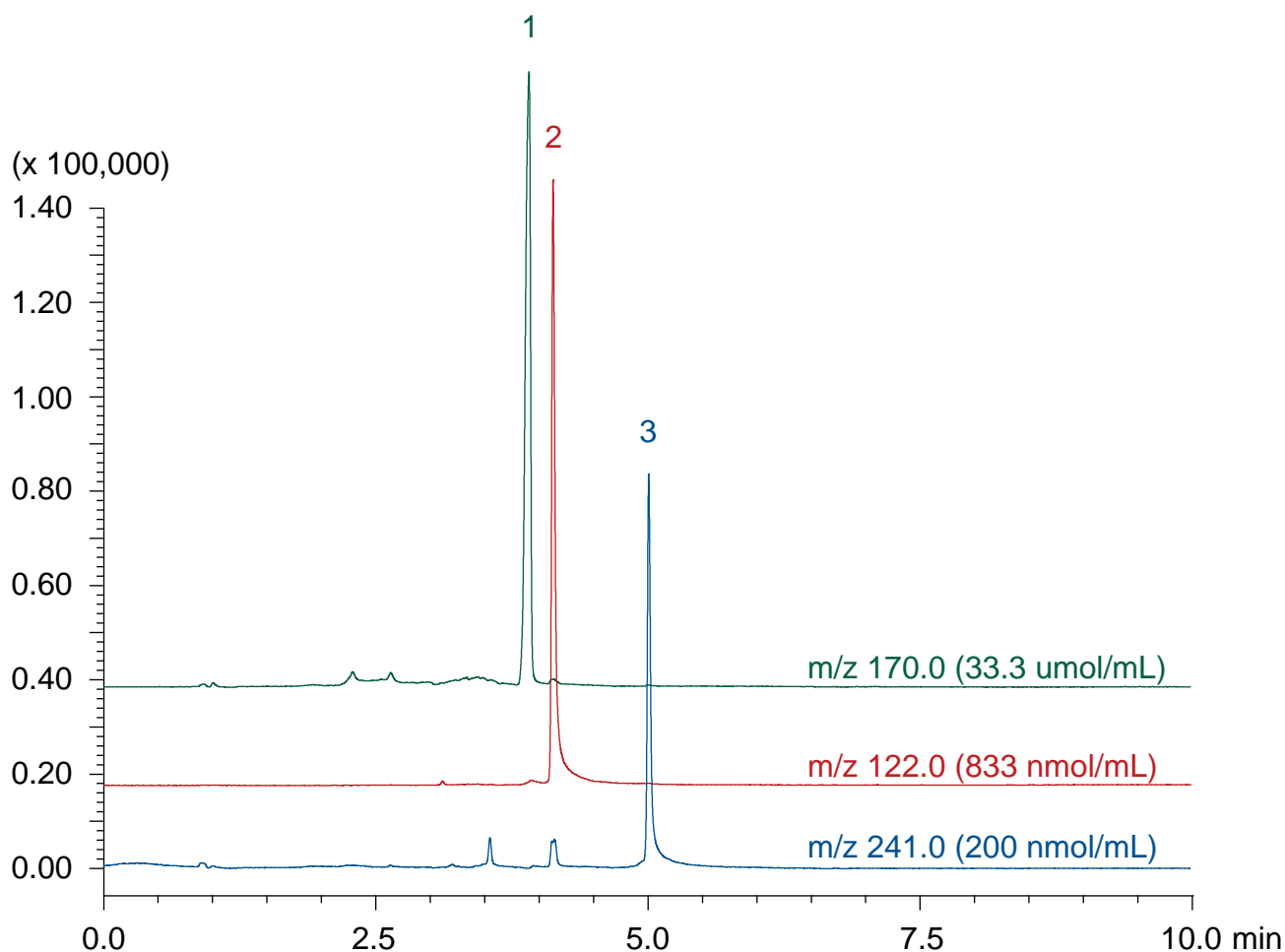
1 L-cysteic acid



2 L-cysteine



3 L-cystine



Intrada Amino Acid, 50 x 3 mm

A: acetonitrile / formic acid = 100 / 0.3

B: 100 mM ammonium formate

0-100 %B (0-7 min), 100 %B (7-10 min)

0.4 mL/mL (1.7 MPa), 37 °C, 3 uL (0.1N HCl)

**INSTRUMENT:**

Shimadzu Nexera UHPLC System - Shimadzu LCMS-2020 (Single Quadrupole MS)

ESI, SIM, positive, Nebulizer gas: 1.5 L/min, Drying gas: 17 L/min

Heat block temp: 500 °C, DL temp: 300 °C