

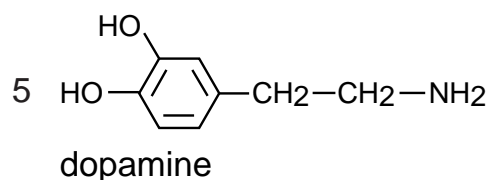
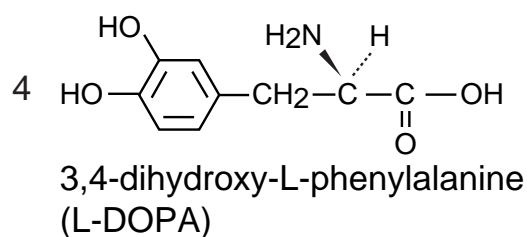
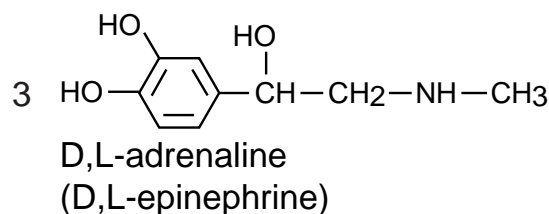
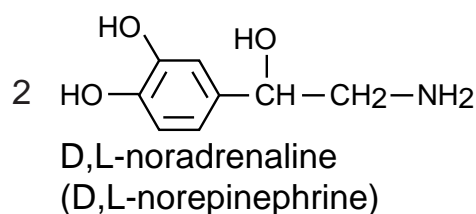
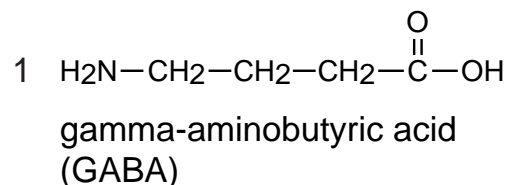
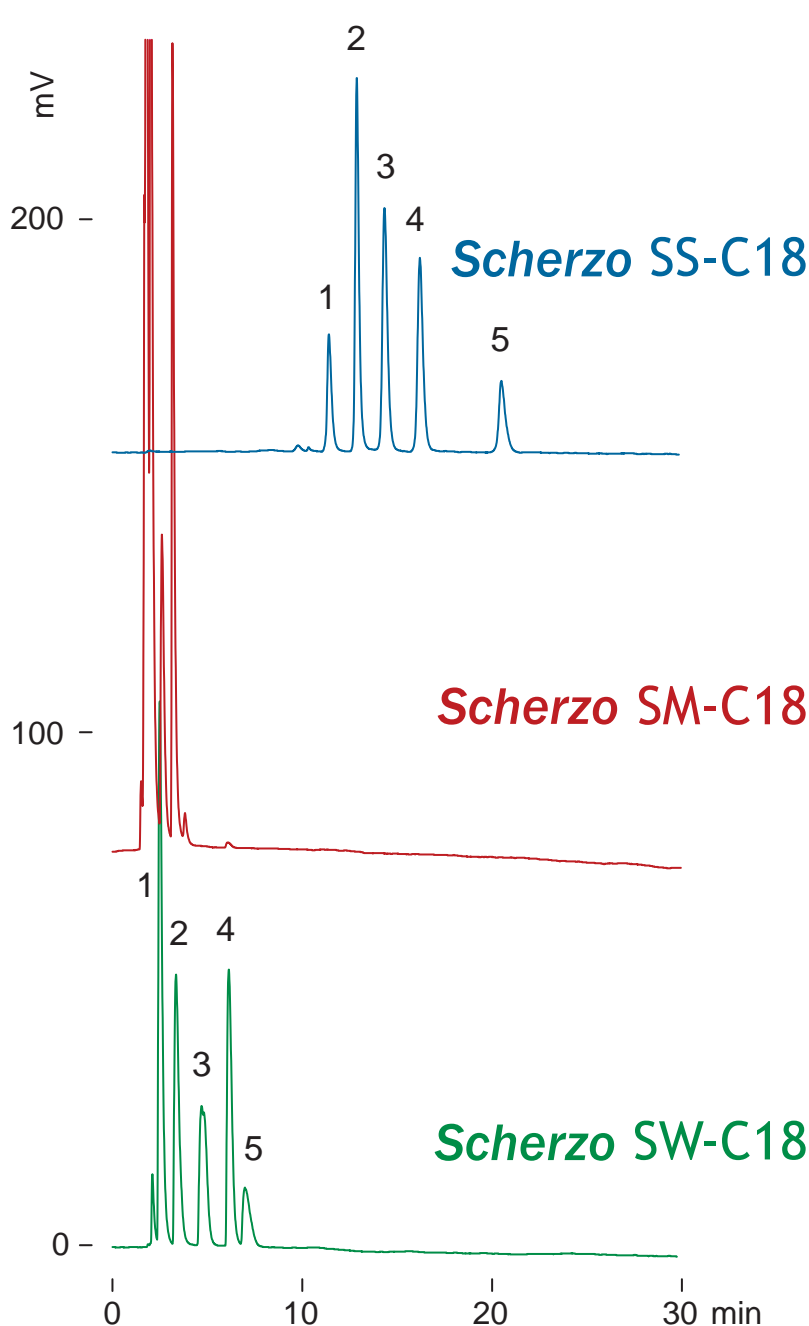
Scherzo SS-C18
 Scherzo SM-C18
 Scherzo SW-C18

150 x 3 mm

Application

Catecholamines

カテコールアミン類



150 x 3 mm

A: water / formic acid = 100 / 0.3

B: 100 mM ammonium formate / acetonitrile = 70 / 30

0-60 %B (0-30 min)

0.4 mL/min (9MPa), 37 deg.C

ELSD (spray chamber 50 deg.C, drift tube 100 deg.C), 2 uL (4-7 ug)