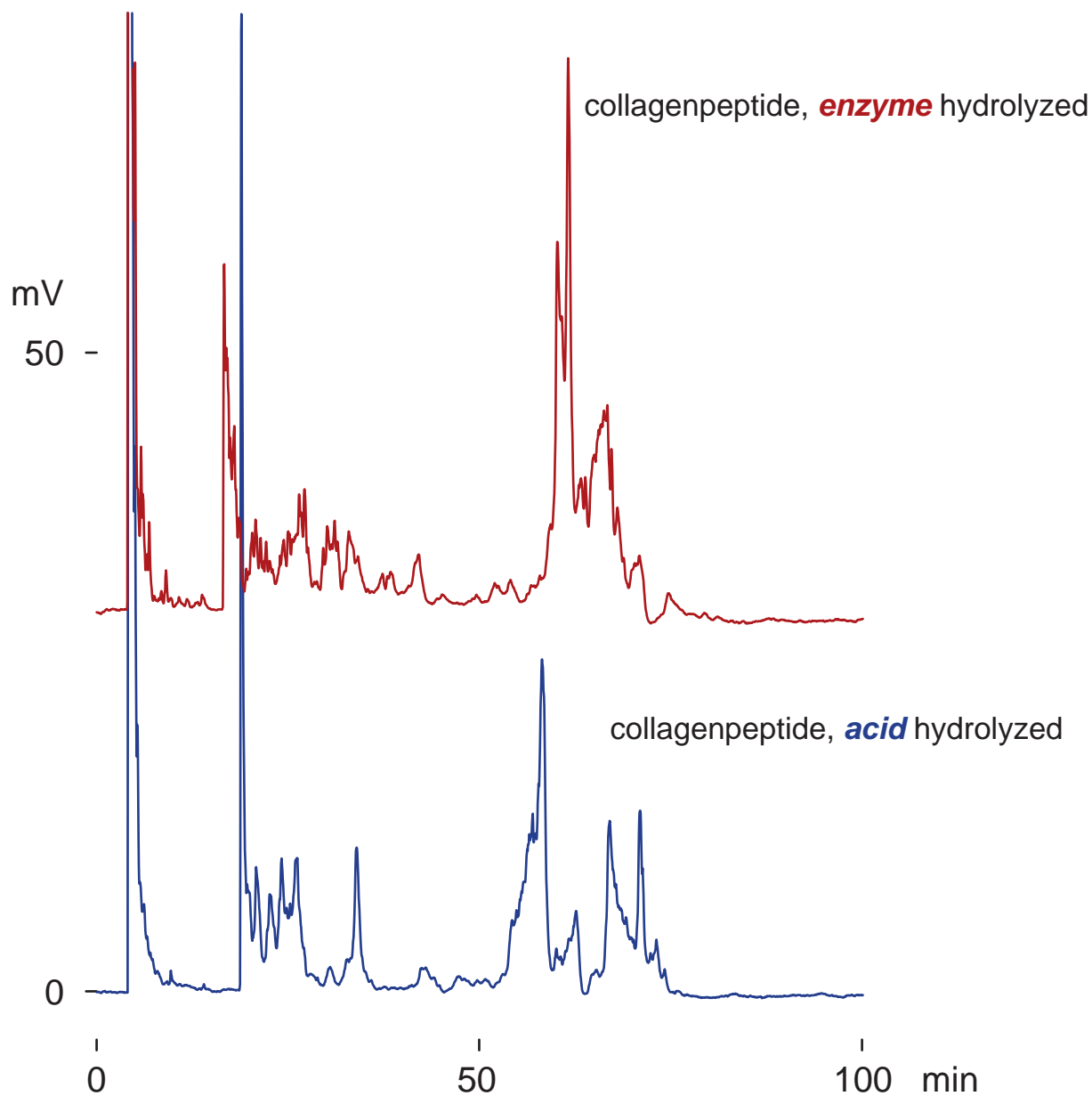


Presto FF-C18

250 x 4.6 mm

Application

Collagenpeptide
コラーゲンペプチド



Presto FF-C18, 250 x 4.6 mm

A: water / formic acid / TFA = 100 / 0.5 / 0.02

B: acetonitrile / formic acid / TFA = 100 / 0.5 / 0.02

1-50 %B (0-90min)

0.4 mL/min (21MPa), 50 deg.C

ELSD (spray chamber 35deg.C, drift tube 100deg.C)

20 uL (20ug, water)