

Presto FF-C18

Cadenza CW-C18

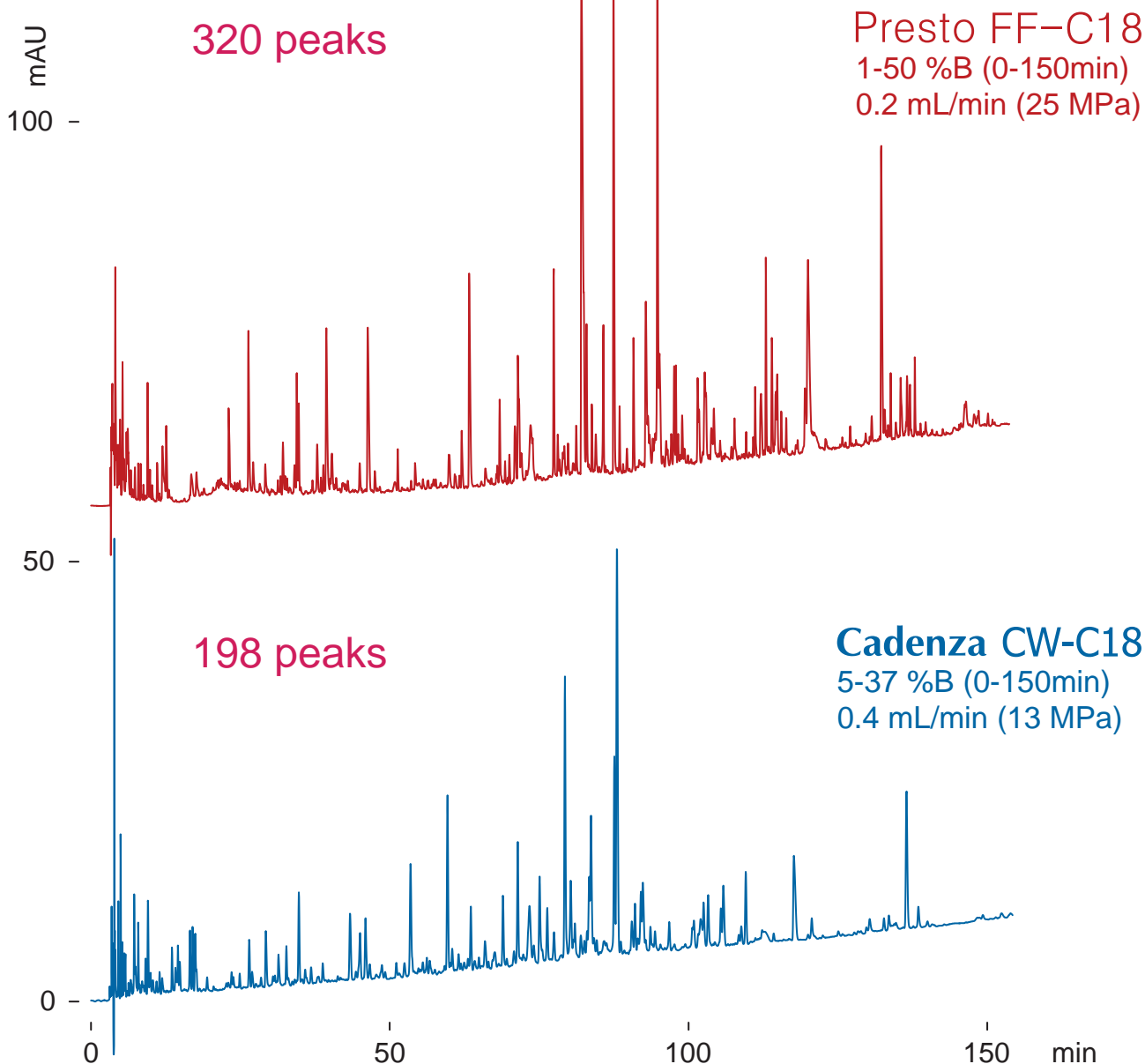
250 x 3 mm

Application

Peptide mapping

ペプチドマッピング

Tryptic digest of alpha-casein



250 x 3 mm

A: water / trifluoroacetic acid = 100 / 0.1

B: acetonitrile / trifluoroacetic acid = 100 / 0.1

50 deg.C, 220 nm, 5 uL