

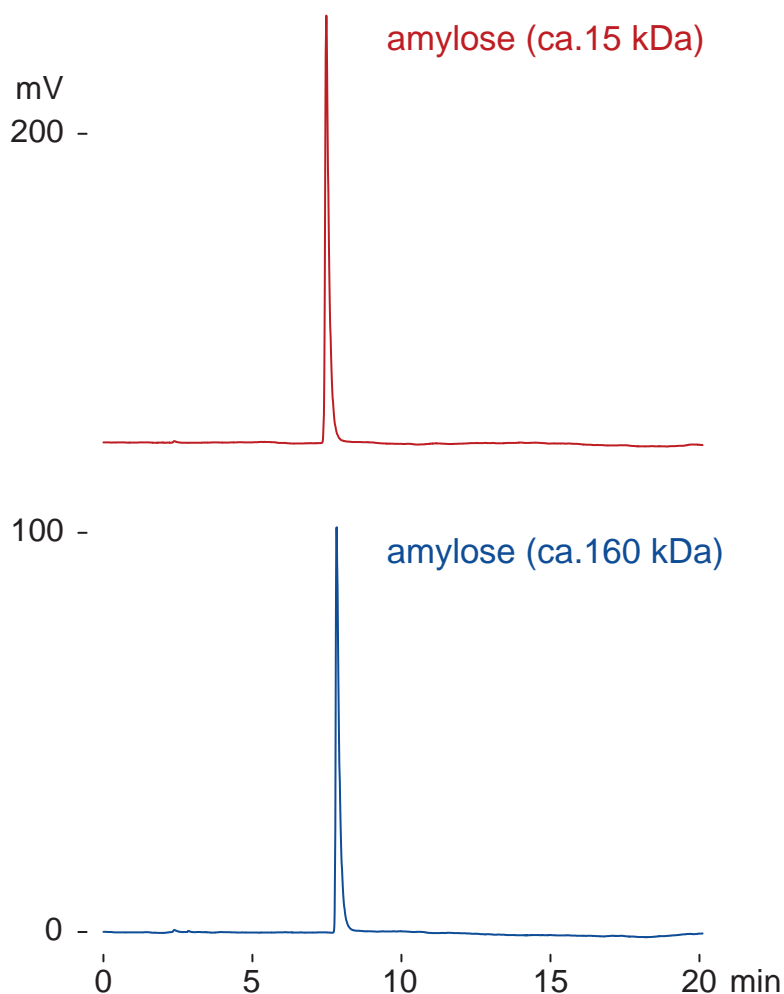
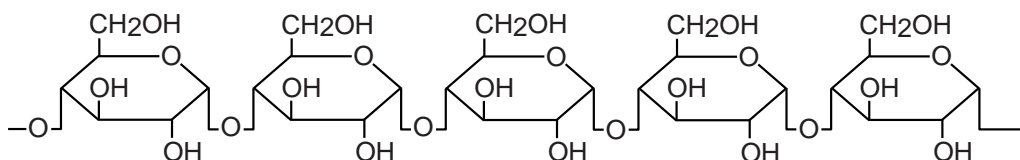
Presto FF-C18

150 x 4.6 mm

Application

Amylose

アミロース



Presto FF-C18, 150 x 4.6 mm

A: water

B: acetonitrile

0-50 %B (0-15min), 0.4 mL/min (17 MPa), 37 deg.C

ELSD (spray chamber 50 deg.C, drift tube 100 deg.C)

1 uL (5 ug, 0.5N-NaOH)