

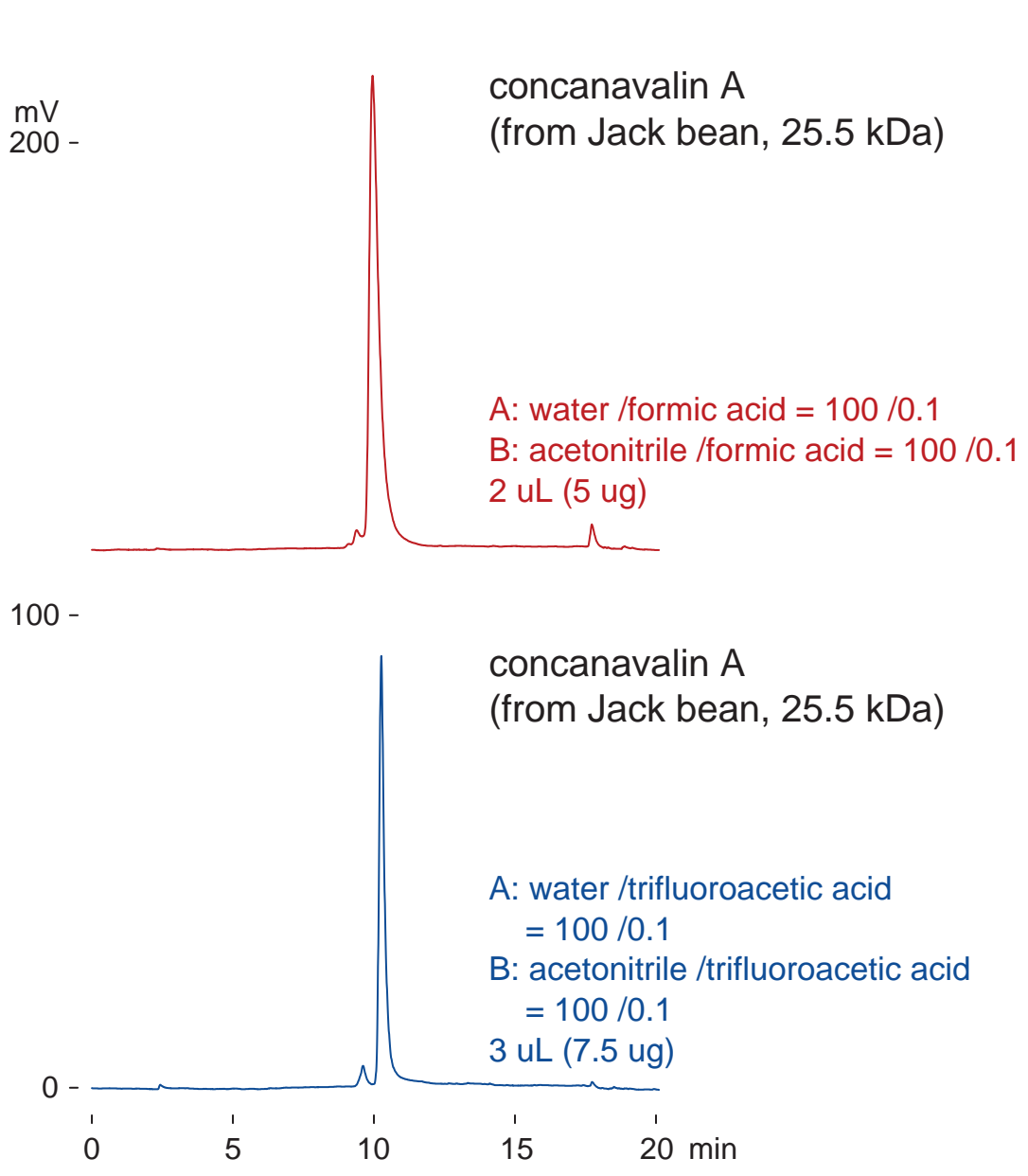
Presto FF-C18

150 x 4.6 mm

Application

Lectin (concanavalin A)

レクチン (コンカナバリン A)



Presto FF-C18, 150 x 4.6 mm
0-90 %B (0-15min)
0.4 mL/min (14 MPa), 50 deg.C
ELSD (spray chamber 50 deg.C, drift tube 100 deg.C)