

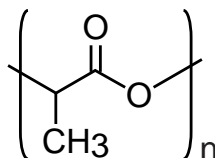
Presto FF-C18

150 x 4.6 mm

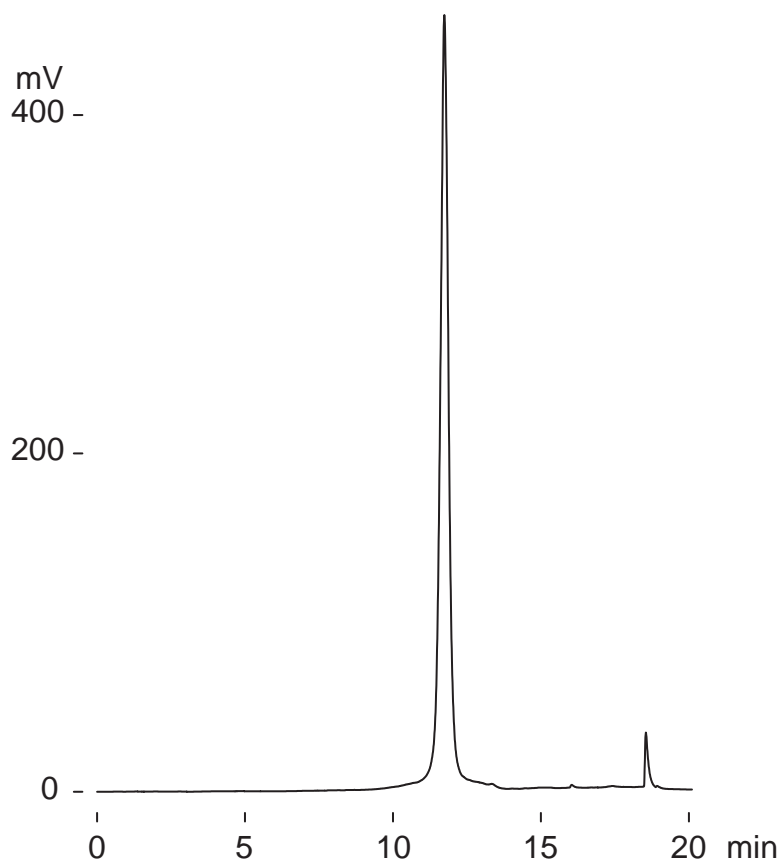
Application

Poly DL-Lactide

ポリ乳酸



poly DL-lactide
(75 ~120 kDa)



Presto FF-C18, 150 x 4.6 mm
 A: water / formic acid = 100 / 0.1
 B: tetrahydrofuran
 0-100 %B (0-10min), 100 %B (10-15min)
 0.4 mL/min (17MPa), 37 deg.C
 ELSD (spray chamber 50 deg.C, drift tube 100 deg.C)
 0.4 uL (0.4 ug, tetrahydrofuran)