

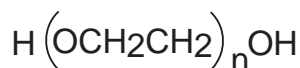
Unison UK-Amino
Cadenza CW-C18

250 x 4.6 mm

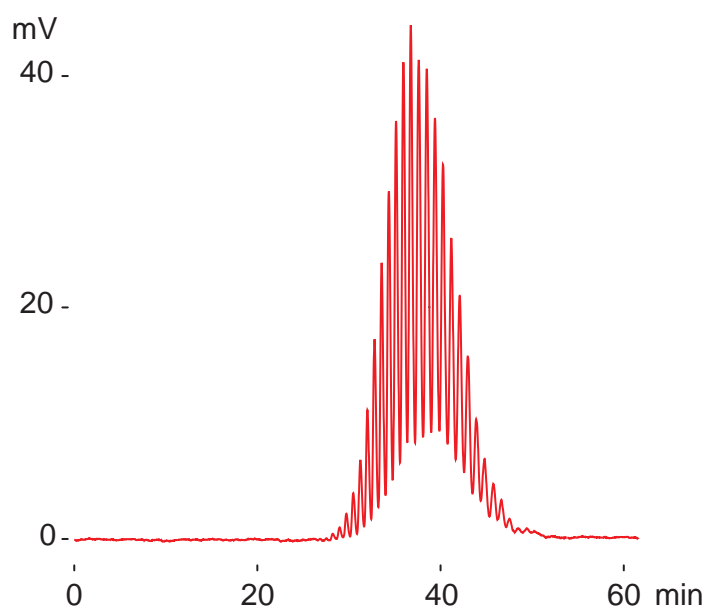
Application

Polyethylene glycol # 2000

ポリエチレングリコール # 2000

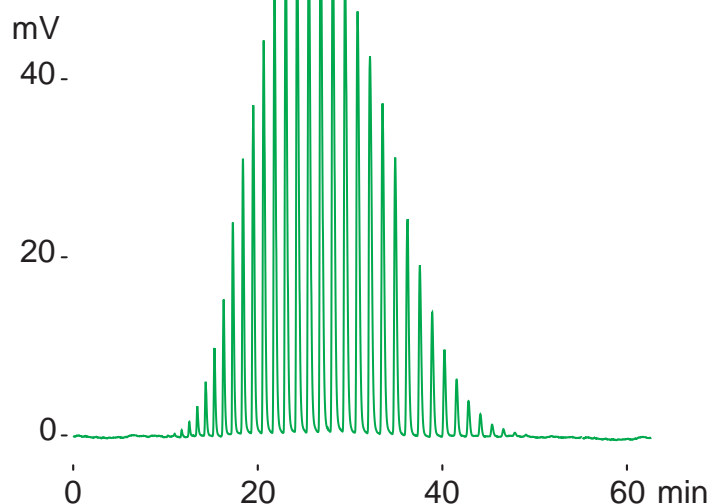


polyethylene glycol #2000 (Av. Mw. 2000)



normal phase

Unison UK-Amino, 250 x 4.6 mm
A: hexane, B: ethanol
7-11%B(0-50min)
1mL/min (6MPa), 37deg.C, ELSD
2uL (40ug)



reversed phase

Cadenza CW-C18, 250 x 4.6 mm
A: water, B: acetonitrile
25-30%B(0-46min)
1mL/min (18MPa), 37deg.C, ELSD
2uL (100ug)